

ANALYSIS OF LAND USE & LAND COVER CLASSIFICATION (LU/LC) USING MACHINE LEARNING ALGORITHM SVM

¹Shivpuje Prakash R., ²Dr. Deshmukh Nilesh K

¹Research Scholar, ²Asst.Professor

¹School of computational sciences SRTM Nanded.

¹Swamo Ramanand Teerth Marathwada University Nanded

Abstract—Nanded have rapid development in every aspect. By using satellite images and application of remote sensing and GIS for land use and land cover change detection were used. For the analysis, ETM+, LISS3 and Landsat 8 images acquired from official websites Bhuvan and USGS. The main challenge in land use and land cover changes using the remote sensing data which how to provide the accurate and geospatial information. Traditionally pixel based classification was used by researchers but to get more accuracy we have implemented object based approach and machine learning algorithms for accuracy enhancement.

Index Terms—SVM, RS, GIS, LU/LC, Machine Learning

I. INTRODUCTION

Remote Sensing research focusing on image classification has attracted the attention of many researchers and a number of researches have been conducted using different classification algorithms. It should be noted that valuable surface information extraction and analysis is also well performed using image classification. Image classification is the process of assigning pixels of continuous raster image to predefined land cover classes. Here we have collected Landsat 8 Image from USGS website and created different LU/LC classes such as agricultural, vegetation, water body, follow land, settlement, and barren land.

II. WHAT IS SVM

Support Vector Machine” (SVM) is a supervised machine learning algorithm which can be used for both classification and regression challenges. However, it is mostly used in classification problems.

III. OBJECT BASED CLASSIFICATION

To classify raster image first we create segmentation and then generate statistics of that image and apply machine learning algorithms which will improve accuracy of classification, here we used different kernel function which eventually improve performance as well as accuracy.

Kernel Functions

- 1) RBF
- 2) Sigmoid
- 3) Linear
- 4) Polynomial

IV STUDY AREA AND DATA USED

The scanned images of the SOI toposheets no fifty six E/3, E/4, E/8 and E/11 on the size of 1:50000 have furthermore been used for the learning space; the images are downloaded from usgs website.

Image Sensor	Year	Source
a) Landsat 8	Year 2017	USGS

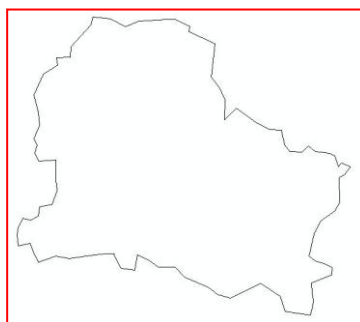


Fig. Nanded Taluka Boundary

Maps Object Based Machine Learning SVM Algorithm Sigmoid as Kernel

LU/LC MAP RBF as Kernel

LU/LC MAP Sigmoid as Kernel

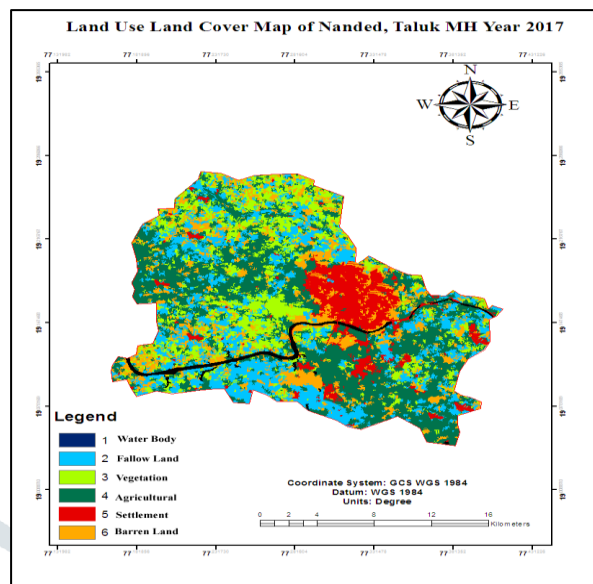
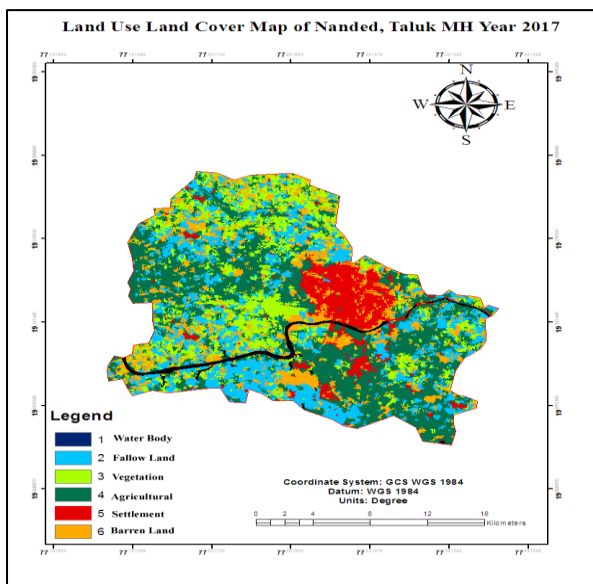


Table 1. Area Covered

LU/LC Class	Area (km ²) RBF	Area in % RBF	Area (km ²) Sigmoid	Area in % Sigmoid
Agricultural Land	92.12281104	25.08	88.52312	24.1
Water Body	8.448264171	2.3	7.456511	2.03
Vegetation	89.47813704	24.36	89.11082	24.26
Fallow Land	77.50364087	21.1	75.04262	20.43
Settlement	84.62956804	23.04	93.44515	25.44
Barren Land	15.13341234	4.12	13.73761	3.74
Total	367.3158	100	367.3158	100

LU/LC MAP Linear as Kernel

LU/LC MAP Polynomial as Kernel

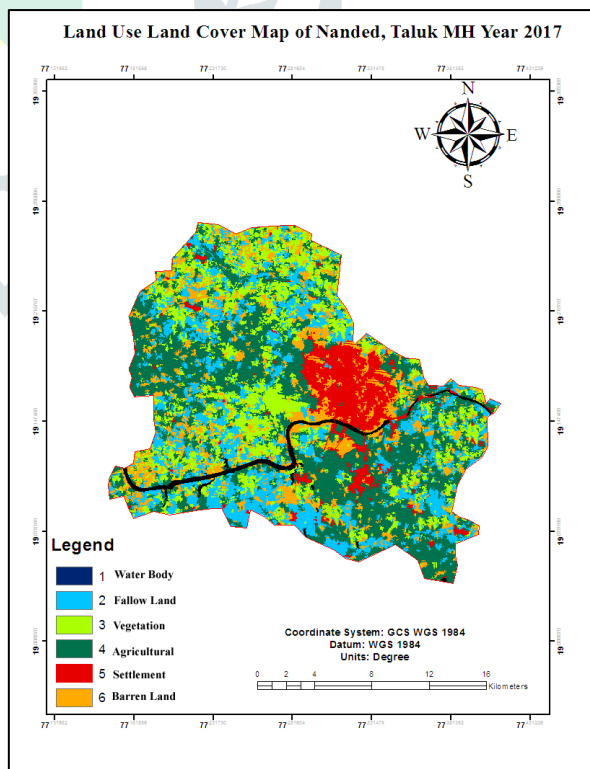
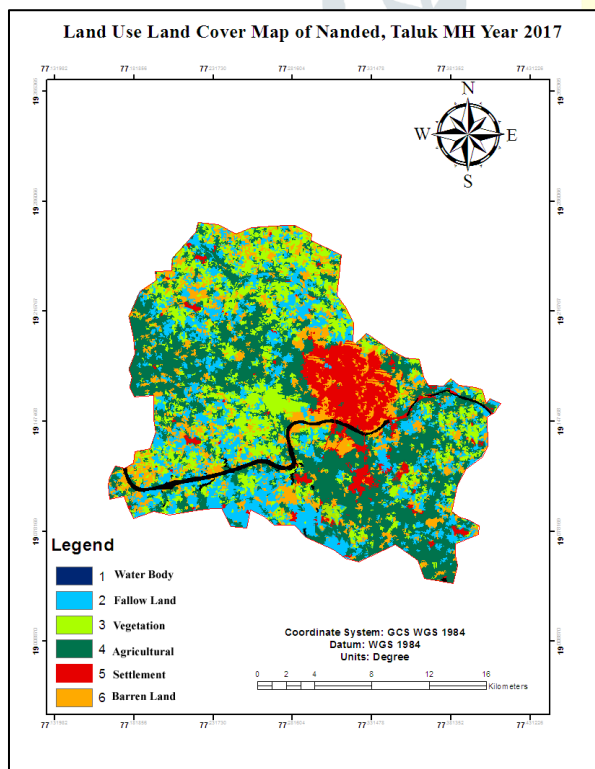
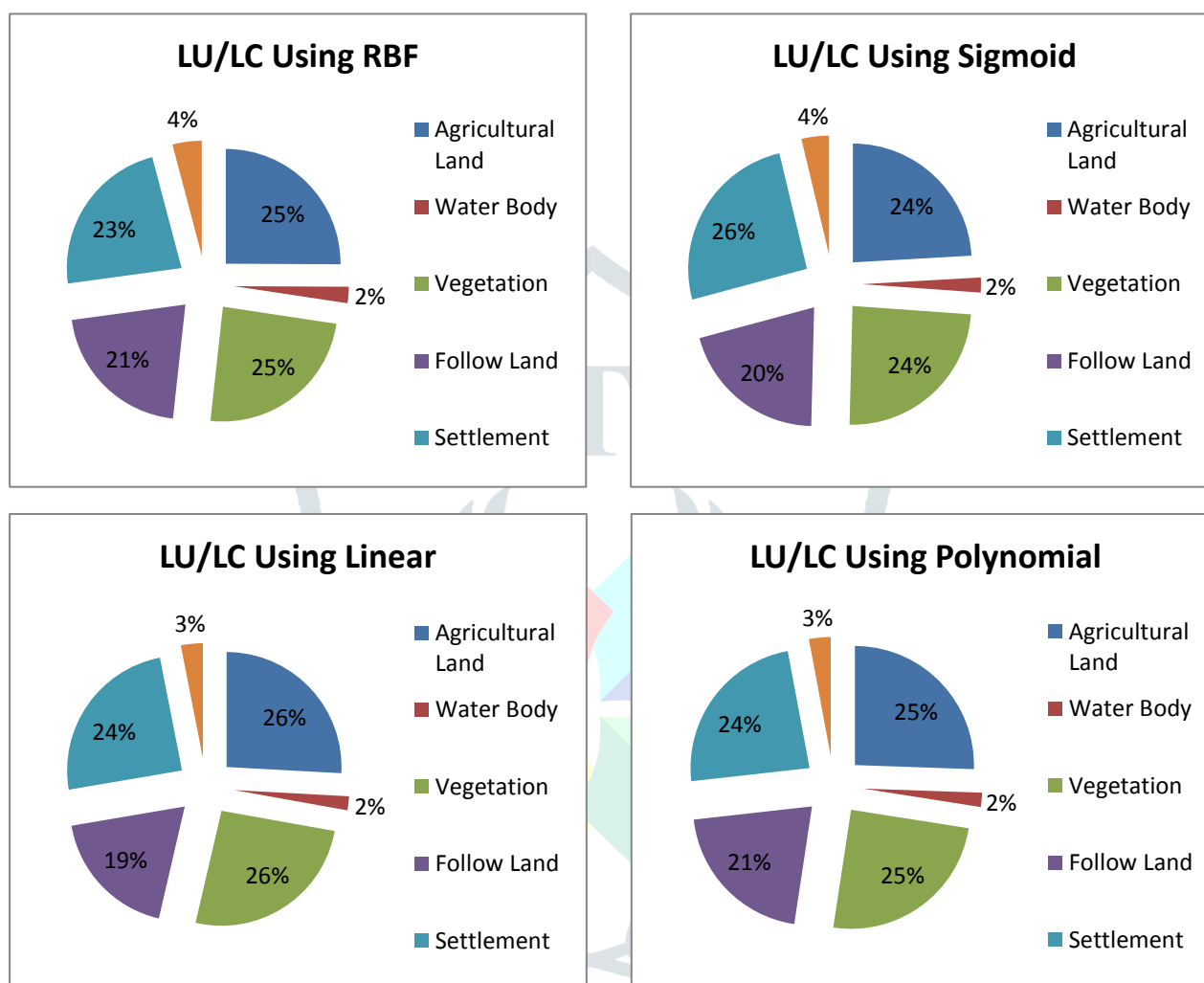


Table 2. Area Covered

LULC Class	Area (km ²) Linear	Area in % Linear	Area (km ²) Polynomial	Area in % Polynomial
Agricultural Land	94.98787	25.86	93.84919	25.55
Water Body	7.19939	1.96	7.089195	1.93
Vegetation	94.80422	25.81	91.49838	24.91
Follow Land	68.65133	18.69	76.54862	20.84
Settlement	90.32296	24.59	87.53136	23.83
Barren Land	11.35006	3.09	10.79909	2.94
Total	367.3158	100	367.3158	100



V. CONCLUSION

Here we have obtained result of LU/LC of Nanded area using four different kernel function RBF, Sigmoid, Linear, Polynomial, the above classifier are best for LU/LC classification. RBF play better role in LU/LC classification for nonlinear data.

VI REFERENCES

- [1] Anindya Haldera "Supervised and Unsupervised Landuse Map Generation from Remotely Sensed Images Using Ant Based Systems", Applied Soft Computing 11 (2011) 5770–5781
- [2] Himani Raina "Analysis of Supervised Classification Algorithms", International Journal of Scientific & Technology Research Volume 4, Issue 09, September 2015 ISSN2277-8616
- [3] Anahita Ghazvini "Comparative Analysis of Algorithms in Supervised Classification: a Case Study of Bank Notes Dataset", International Journal of Computer Trends and Technology (IJCTT) – Volume 17 Number 1 – Nov 2014
- [4] Rupali R. Surse "Multiple Crop Classification Using Various Support Vector Machine Kernel Functions", Journal of Engineering Research and Applications ISSN: 2248-9622, Vol. 5, Issue 1(Part 5), January 2015, Pp.103-109
- [5] Sayed Fadel "Investigating the Effect of Different Kernel Functions on the Performance of Svm for Recognizing Arabic Characters", (IJACSA) International Journal of Advanced Computer Science and Applications, Vol. 7, No. 1, 2016
- [6] B. Yekkehkhany "A Comparison Study of Different Kernel Functions for Svm-based Classification of Multi-temporal Polarimetry Sar Data", ISPRS
- [7] M. avci "A Hierarchical Classification of Landsat Tm Imagery for Land cover Mapping", Wg Iv/6