

# Prevailing Security Scenario in Supply Chain: A Global Perspective

Dr Pallavi Dongre  
Assistant Professor  
Datta Meghe institute of Management Studies,  
Nagpur

Tanuja Janbandhu  
MBA Student  
Datta Meghe institute of Management Studies,  
Nagpur

## Abstract

The paper focuses on understanding the standing scenario of security in global supply chain management. It seeks to find out the key arenas in security of global supply chain. For the study, discussions were carried out with concerned area heads like store and logistic department of organisations implementing global supply chain and various websites and articles published in journals and books ,etc were considered for understanding the subject.

## Keywords:

Global Supply chain, supply chain management, fleet management, fleet security, international trade and regulation policies

Supply chain management globally, is characterized as the seizure of merchandise and enterprises all through trans-national organizations' worldwide system to amplify benefit and limit consumption avoiding wasting resources. It has coordination in supply chain along with logistics as its core area. It also focuses on customer and contestant orientation along with effective functioning of operations in the organization.

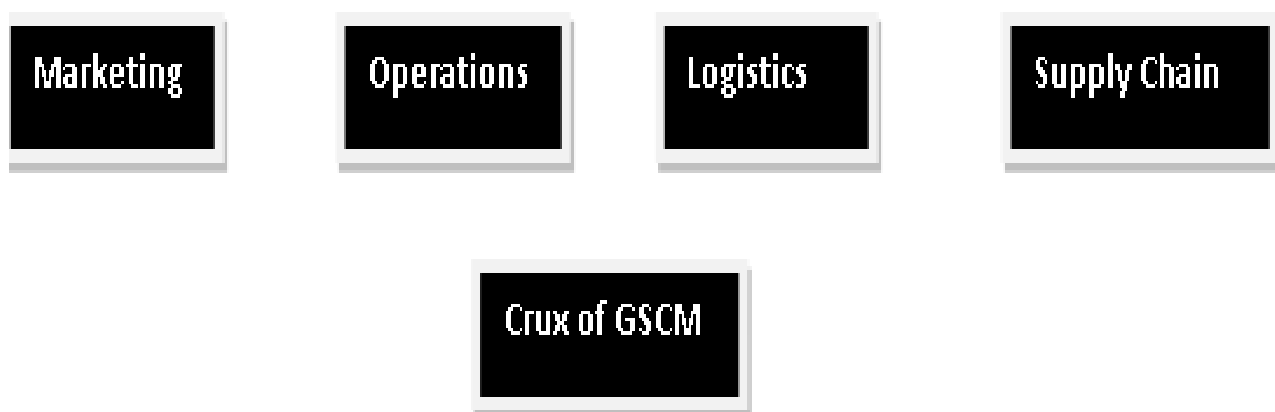


Figure: Main arenas of Global Supply Chain Management

As the core areas are interlinked and needs coordination for effective Supply Chain Management (SCM), there are many issues and concerns which arise in its course.

### **Research Methodology**

The study focuses on understanding the standing issues concerned with global supply chain management .For this the data is collected by method of discussion with concerned area heads like store and logistic department of organisations implementing global supply chain.

Various secondary sources are also used to understand the global perspective of supply chain management and the issues concerned through various websites and articles published in journals and books ,etc.

The data was collected by the method of convenient sampling.

### **Security Arena in SCM**

A pivotal objective of any production network security or SCM exertion is to seek proper utilization of time and resources, proficient stream of monetary issues involved while shielding and anchoring the data and information avoiding its misuse which leads to vulnerability of the organization. The involved organizations' administration additionally should implement benchmarked practices or best practices to others in the same line of work for effective supply chain on global level throughout the industry.

Security in supply chain depends highly upon the organization, project layout and, kind of provisions or information and dangers positioned by needs as well as it requires the utilization of customary physical security advancements and additionally tech interesting to the mission, for example, seals, worldwide situating and more refined finding and following applications. Various Stockrooms for inventory or Work in progress goods or warehouses, dispersion focuses, seaports, air terminals, and other road way center points and cargo terminals all give themselves some accreditation for effective controlling. Frequent use of security video, as well as IP-oriented scrutinizes are prepared.

Globalization has affected production network security and innovation arrangements, as indicated by many senior executives, consistence and examinations, corporate hazard administrators, who includes that all that really matters is to "distinguish" things before they happen with insightful frameworks and investigation. It's every one of the matter of hazard moderation. Past security, there are different explanations behind production network security

International Trade Practices and the regulations involved are also important to keep in check. Any trade goes under the scrutiny of World Trade Organization which regulates the trade globally after the emergence of trade in free form. The tight hold of World Trade

Fleet Security is also an standing issue in global supply chain management.

Regardless of the orientation, SCM depicts few core regions where fleets need to make what's designated optimum performance through execution.

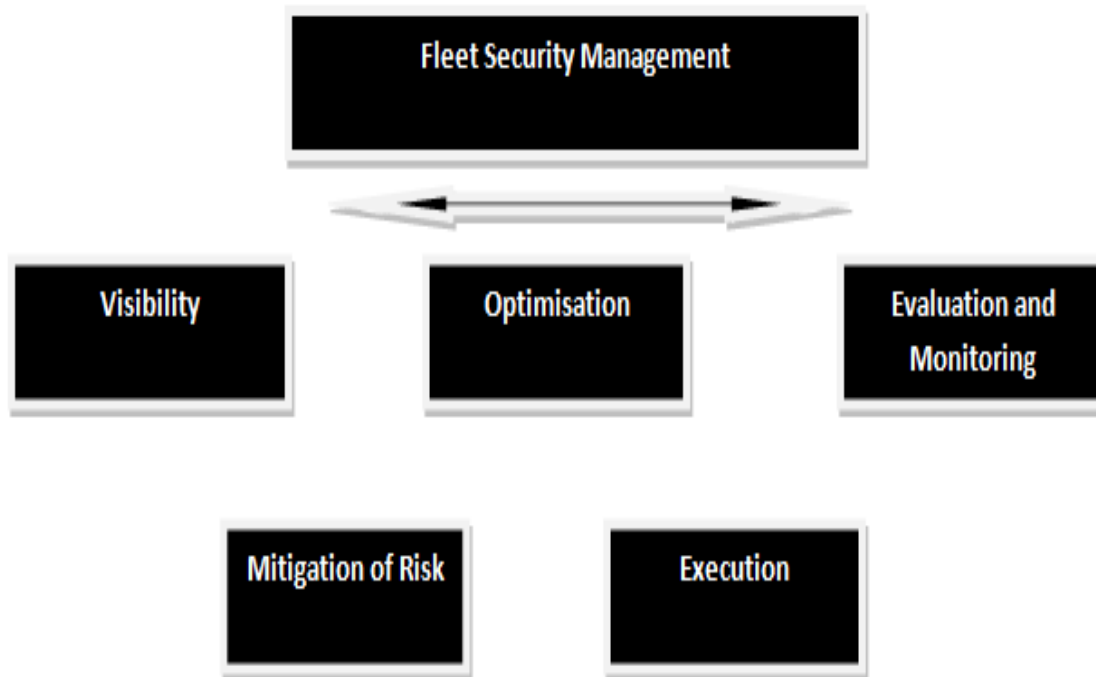


Figure: Depiction of Fleet Security Management

Continuous freight or resource area with ecological detecting capacity for load respectability is required through proper visibility. For this real time cargo or varied options like material location with ecological sensing ability for reliability of cargo functioning are required.

For administrative consistence and contingency planning in case of any mishaps or in case of error in process or material handling and in case of occurrence of crime, the related scene investigation, it is highly important to have tight evaluation and monitoring. By validating the requisite regulatory compliance formalities this scan be kept in control. Forensic investigations also play a pivotal role in these kinds of mishaps and crime occurrences.

Execution of the task in transit in the estimated time is very crucial in fleet security management. Evaluation of entry of fleet at the record time matching it with the set standard, destination affirmation and related warnings and notifications need to be regulated.

mindfulness and avoidance of criminal movement through law authorization commitment and help with recuperation can be achieved by risk moderation. Mitigating risk is crucial for understanding the uncertainties and its impact possessed as well as to make a way to come out of it.

The optimum cost, quality and time are very essential. Conditional steering with directed territories for inventory network change management and transporter assessment is crucial to keep on check. It is equally important to keep track of shipment details as per the set rules and regulation for optimum efficiency of fleet security.

### **Conclusion**

The study of prevailing security scenario in global Supply Chain Management gives depiction of the core areas related to global supply chain of having optimum control on fleet and tight data security is required as well as it came into light to have a strong hold on International Trade Practices and the regulations for effective and tight security.

### **References**

- [www.tradeready.ca/.../supply-chain-management/global-supply-chain-management](http://www.tradeready.ca/.../supply-chain-management/global-supply-chain-management)
- <https://www.rider.edu/academics/colleges.../global-supply-chain-management>
- [www.businessdictionary.com/definition/procurement.html](http://www.businessdictionary.com/definition/procurement.html)