

# Aerodynamic Drag Reduction of a Passenger Car Using Spoiler & VGs

**Ram Bansal**

Assistant Professor, Department of Mechanical Engineering, Medi-Caps University, Indore

**Abstract :** In this article we have to intend an effective numerical model based on the Computational Fluid Dynamics (CFD) method to obtain the reduction in drag forces around a passenger car with Spoiler & VGs together. This experimental work of the test vehicle and grid system is constructed by ANSYS-14.0. FLUENT which is the CFD solver & employed in the present work. In this study, numerical iterations are completed, then after aerodynamic data and detailed complicated flow structure are visualized.

In this work, model of generic passenger car has been developed in solid works-10 and generated the wind tunnel and applied the boundary conditions in ANSYS-14.0 workbench then after testing and simulation has been performed for the evaluation of drag coefficient for passenger car. In another case, the aerodynamics of the most suitable design of Spoiler and VGs both are with the passenger car and analyses for the evaluation of aerodynamic coefficients for passenger car. The addition of spoiler with VGs results in a reduction of the drag-coefficient 4.35% and lift coefficient 18.83% in head-on wind. Hence, the drag force can be reduced by using add on devices on vehicle and fuel economy, stability of a passenger car can be improved.

**Index Terms - Aerodynamic Drag,  $C_D$ ,  $C_L$ , Spoiler, VGs, Wind tunnel simulation, FLUENT, Generic passenger car, CFD.**

## 1. Introduction

A few years ago when fuel crisis was not a problem, cars were mainly designed for high-speed manoeuvre, comfort, and safety. However, with the recent impact due to the increasing fuel price since 2002, the sale of automobile industry all over the world crippled. This was immediately followed by many questions raised regarding the effect of oil supply shortage on the future of this industry. Many solutions were certainly suggested and many once-considered-infeasible solutions were now given serious second thoughts. Beside the development of electronic car and fuel cell, other proposed approaches include the integration of air conditioning system with electronic devices to cut down energy consumption, the redesign of car frame and body to reduce its total weight, and the modification of car external to improve the car overall aerodynamic characteristics for better cruising conditions, greater stability of navigation, and lower energy consumption. These subjects are also indirectly related to environmental protection and noise pollution.

In the process of car design, the aerodynamics must be seriously considered. A car design can only be acceptable if its form drag reduced. Many researchers have made use of CFD techniques [1–4] to perform numerical simulations related to automobile.

The current study presents the development process of aerodynamic holography in the vehicle outer-body. Several numerical simulations were performed to analyse the pressure field, velocity vector field, and aerodynamic force prediction related to a passenger car. Then, the stability of the aerodynamic forces caused by the airflow outside the car was identified. After that, the installation of spoiler with vortex generators that leads to lower wind drag was carefully evaluated. Through Fluent [5, 6], this work used  $k$ - $\epsilon$  steady model to compute the flow properties around the car and its add-on device.

As a matter fact, it is very uncommon to use  $k$ - $\epsilon$  steady model in a iterations-dependent problem. However, it is the goal of this work to demonstrate the feasibility of integrating this very uncommon approach (i.e., the using of  $k$ - $\epsilon$  steady model) with the computational procedure. Within a relatively short amount of time, this computational process was capable of estimating the aerodynamics of a car at high accuracy. This will provide the automobile research and development teams an alternative approach when performing CAE analysis.

In general, the design criteria of vortex generators are only limited to considering the aerodynamics aspect due to the VGs. Car drivers usually install VGs that successfully reduces the lift and improves traction leading to better manoeuvre. However, the aero-dynamics performance corresponding to the vortex

generators has deteriorated severely. For this reason, this work has introduced the designers of VGs a new direction, tool, and idea for VGs design process. In the following sections, the methodology will be presented in detail.

## 2. Methodology

In this work, first of all a generic model of the passenger car is prepared in the SOLIDWORKS software and this generic model is import into the ANSYS FLUENT to do the simulation of the coefficient of drag and coefficient of lift in the wind tunnel which is generated in the design module of the ANSYS FLUENT. After this the meshing is generated on the surface of the passenger car.

Aerodynamic evaluation of air flow over an object can be performed using analytical method or CFD approach. On one hand, analytical method of solving air flow over an object can be done only for simple flows over simple geometries like laminar flow over a flat plate. If air flow gets complex as in flows over a bluff body, the flow becomes turbulent and it is impossible to solve NS and continuity equations analytically. On the other hand, obtaining direct numerical solution of NS equation is not yet possible even with modern day computers. In order to come up with reasonable solution, a time averaged NS equation is being used (Reynolds Averaged Navier-Stokes Equations – RANS equations) together with turbulent models to resolve the issue involving Reynolds Stress resulting from the time averaging process.

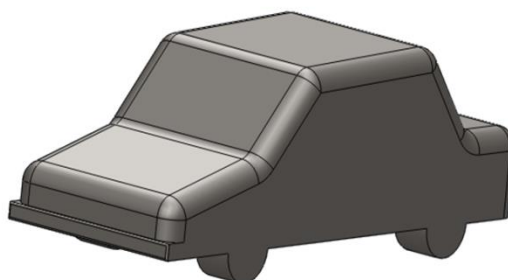
In present work the k-e turbulence model with non-equilibrium wall function is selected to analyze the flow over the generic passenger car model. This k-e turbulence model is very robust, having reasonable computational turnaround time, and widely used by the auto industry.

### Steps of Analysis:

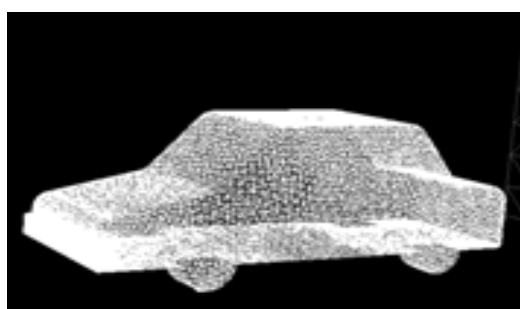
- Select the models of vehicle upon which add on devices are to be used.
- Formation of Base Line Model: Designing of model in solid works with proper dimensions & parameters.
- Baseline passenger car CFD method and setup: Apply the boundary conditions.
- Generate the wind tunnel for simulation.
- Simulation & Testing of base line passenger car for drag coefficient and lift coefficient.
- Simulation & Testing of passenger car with Spoiler & Vortex Generators together for drag coefficient & lift coefficient.
- Impact of add on device on fuel economy of Passenger car.

## 3. Formation of Base Line Model

The base line model of generic passenger car is designed in Solid Works. Figure 1 show the generic passenger car used in the present CFD simulation. The full size generic passenger car is 3395mm long, 1490mm wide, 1475mm high. Then after, this model has been analysed for drag coefficient and forces under the ANSYS-14.0 (FULENT) module and values of drag coefficient, lift coefficient.



*Figure 1 solid-work model of car without VGs*



*Figure 2 Meshed model of Base Car*

The surface mesh of generic passenger car is shown in figure 2. This surface mesh is Tetrahedrons type is generated on its surface. A surface mesh of 1.5 mm size is created on the vehicle surface.

#### 4. Baseline passenger car CFD method and setup

The CFD simulation by Yang [12] is reproduced in the present simulation. Table 1, Table 2, Table 3 and Table 4 shows the solver setup, viscous model and Turbulence model settings, boundary condition settings and solution controls for present simulation respectively. The assumptions made in present simulation have the air flow is steady state with constant velocity at inlet and with zero degree yaw angle, constant pressure outlet, no slip wall boundary conditions at the vehicle surfaces, and inviscid flow wall boundary condition on the top, sidewalls and ground face of the virtual wind tunnel.

**Table 1 Solver setting**

<i>CFD Simulation</i>	<i>3d dp (3-D Double Precision)</i>
<i>Solver</i>	
<i>Solver</i>	<i>Fluent</i>
<i>Space</i>	<i>3D</i>
<i>Formulation</i>	<i>Implicit</i>
<i>Time</i>	<i>Steady</i>
<i>Velocity Formulation</i>	<i>Absolute</i>
<i>Gradient Option</i>	<i>Cell-Based</i>
<i>Porous Formulation</i>	<i>Superficial Velocity</i>

**Table 2 viscous model and Turbulence model settings**

<i>Turbulence Model</i>	<i>k-e (2 eqn)</i>
<i>k-epsilon Model</i>	<i>Standard</i>
<i>Near-Wall Treatment</i>	<i>Enhanced wall Function</i>
<i>Operating Conditions</i>	<i>Ambient</i>

**Table 3 Boundary condition settings**

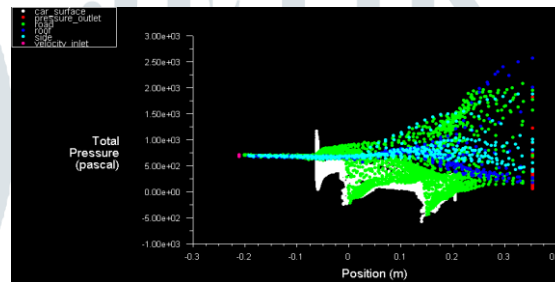
<b>Boundary Conditions</b>		
<i>Velocity Inlet</i>	<i>Magnitude (Measured normal to Boundary)</i>	<i>22 m/s (constant)</i>
	<i>Turbulence Specification Method</i>	<i>Intensity and Viscosity Ratio</i>
	<i>Turbulence Intensity</i>	<i>1.00%</i>
	<i>Turbulence Viscosity Ratio</i>	<i>20</i>
<i>Pressure Outlet</i>	<i>Gauge Pressure magnitude</i>	<i>0 pascal</i>
	<i>Gauge Pressure direction</i>	<i>normal to boundary</i>
	<i>Turbulence Specification Method</i>	<i>Intensity and Viscosity Ratio</i>
	<i>Backflow Turbulence Intensity</i>	<i>10%</i>
	<i>Backflow Turbulent Viscosity Ratio</i>	<i>10</i>
<i>Wall Zones</i>	<i>- vehicle surface-noslip wall B/c</i> <i>- Ground face- inviscid wall B/C</i> <i>-Side faces -inviscid wall B/C</i>	
<i>Fluid Properties</i>	<i>Fluid Type</i>	<i>Air</i>
	<i>Density</i>	<i><math>\rho = 1.175 \text{ (kg/m}^3 \text{)}</math></i>
	<i>Kinematic viscosity</i>	<i><math>\nu = 1.7894 \times 10^{-5} \text{ (kg/(m}\cdot\text{s))}</math></i>

**Table 4 Solution Controls**

<i>Equations</i>	<i>Flow and Turbulence</i>
<i>Discretization</i>	<ul style="list-style-type: none"> <li>• <i>Pressure: Standard</i></li> <li>• <i>Momentum: Second Order Upwind</i></li> <li>• <i>Turbulence Kinetic Energy: Second Order Upwind</i></li> <li>• <i>Turbulence Dissipation Rate: Second Order Upwind</i></li> </ul>
<i>Monitor</i>	<i>Residuals &amp; Drag Coefficient</i>
<i>Convergence Criterion</i>	<ul style="list-style-type: none"> <li>- <i>Continuity = 0.001</i></li> <li>- <i>X-Velocity = 0.001</i></li> <li>- <i>Y-Velocity = 0.001</i></li> <li>- <i>k = 0.001</i></li> <li>- <i>epsilon = 0.001</i></li> </ul>

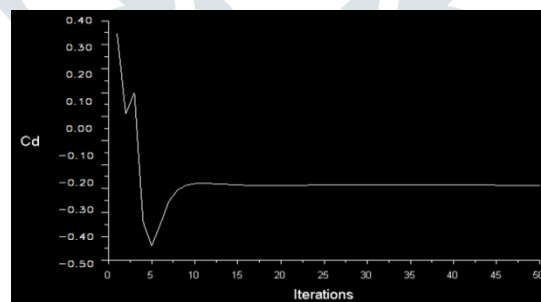
### 5. Simulation and testing of Baseline passenger car for drag coefficient & lift coefficient

Figure 7 shows the pressure coefficient plot on the car surface for base model simulation. The pressure coefficient plot shows that the stagnation point is created on the front surface of the passenger car. The pressure coefficient also indicates that CFD simulations have a tendency to overshoot the  $C_p$  value at stagnation point. The Maximum  $C_p$  value obtained in base model simulation is  $C_p = 2.0$ .

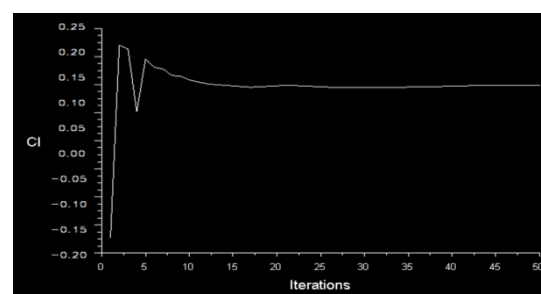


*Figure 3 Total Pressure on car surface, Velocity inlet, pressure outlet and road of base model*

Figure 4 and 5 are shows the Coefficients of drag ( $C_D$ ) and Coefficients of lift ( $C_L$ ) on the base model. Maximum value of the coefficient of drag is 0.3512 and the Maximum value of the coefficient of lift is 0.2310.



*Figure 4 Drag Coefficients  $C_D$  of base model*



*Figure 5 Lift Coefficients  $C_L$  of base model*

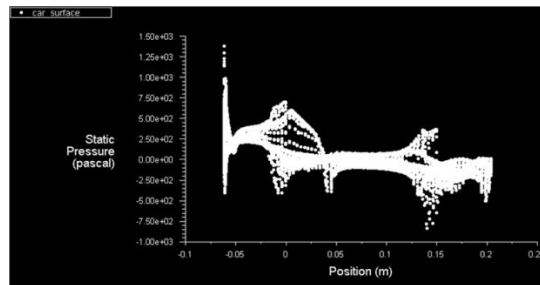


Figure 6 Static pressure distributions on Base model car surface

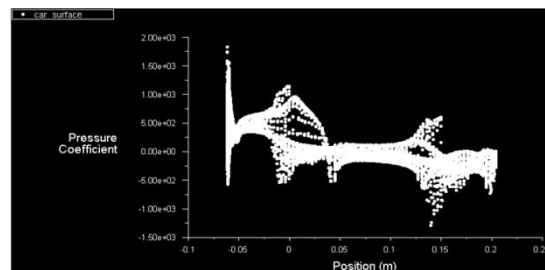


Figure 7 Pressure Coefficient on Base model Car surface

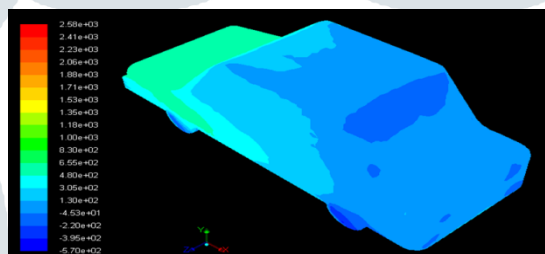


Figure 8 Total pressure on surface of the of base model passenger car

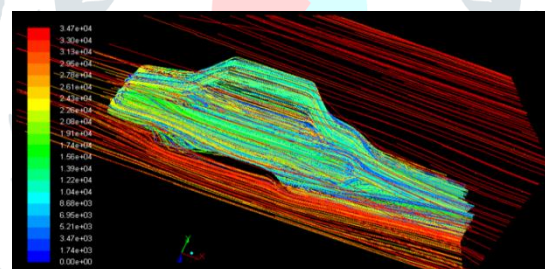


Figure 9 Path lines on surface of the of base model passenger car

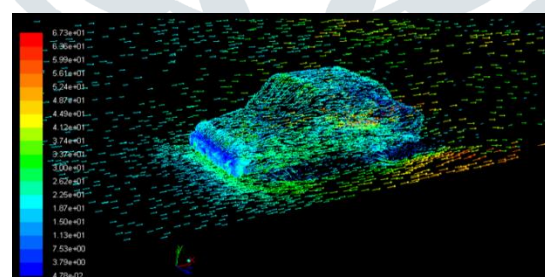


Figure 10 Velocity Vector on surface of the of base model passenger car

## 6. Simulation and testing of passenger car with Vortex Generators for drag coefficient & lift coefficient

First, a background on vehicle aerodynamics will be covered, including explanation of the concepts and formulas involved. Next, the procedure for building a basic model, including the passenger car and wind tunnel, along with dimensions and simulation parameters, will be developed. The basic model will then be compared with a reputable benchmark to confirm validity of the simulation setup and corresponding results. Once the basic simulation model is benchmarked, it will then be modified to include the external drag reduction devices.

The vortex generators are placed at back side of the roof and the spoiler is placed at the boot of the passenger car. The combinations of both of them are shows in the figure 11.

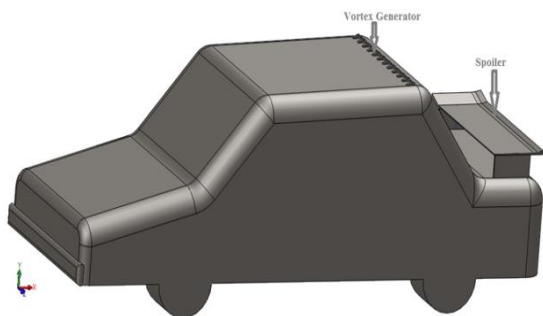


Figure 11 Passenger car with Spoiler and Vortex Generators

Figure 12 is shows the Mesh generated on the surface of the model of Generic Passenger car with Spoiler and Vortex Generators. The tetrahedron mesh is generated on its surface and a surface mesh of 1.5mm size is created on the vehicle surface.

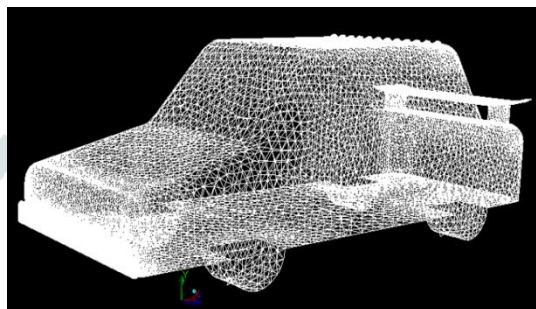


Figure 12 Meshed model of the Passenger car with Spoiler and Vortex Generators

Figure 13 is shows the total pressure distribution on the car surface, velocity inlet, pressure outlet, side wall and on the road. The distribution of pressure on the front bumper is  $5.00e+02$  pascal and at the rear boot is  $3.00e+02$  pascal are shown in it.

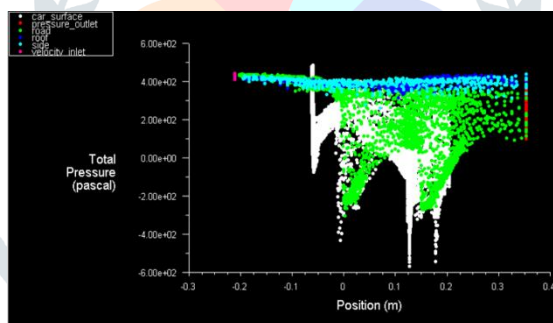


Figure 13 Total Pressure distributions on the car surface, velocity inlet, pressure outlet and on road

The coefficient of drag and coefficient of lift are shown in figure 14 and figure 15 respectively. The maximum value of the Coefficient of drag ( $C_D$ ) is 0.3359 and the Maximum value of the coefficient of lift ( $C_L$ ) is 0.1875.

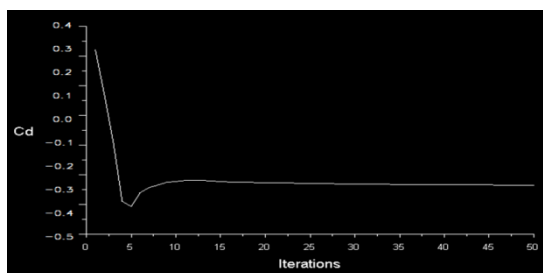


Figure 14 Coefficient of Drag ( $C_D$ ) passenger car with Spoiler and VGs

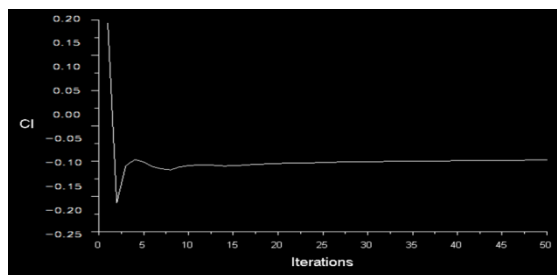


Figure 15 Coefficient of Lift ( $C_L$ ) passenger car with Spoiler and VGs

The figure 16 shows the distribution of the pressure coefficient on the generic passenger car surface. The value of pressure coefficient on the front bumper is  $1.00e+02$  pascal and at the rear boot the value of the pressure coefficient is  $-1.00e+02$  pascal.

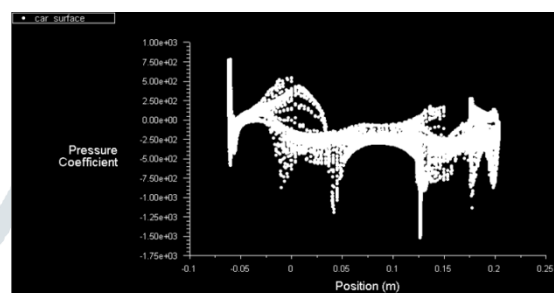


Figure 16 Pressure Coefficient distributions on surface of the car with Spoiler and VGs

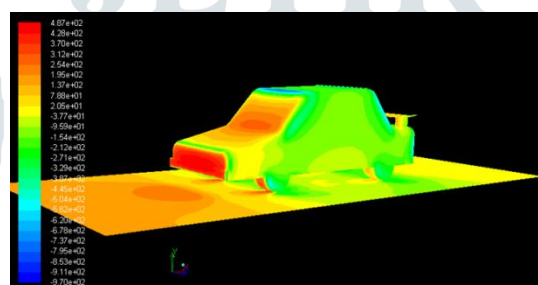


Figure 17 Static Pressure Contour on surface of car with Spoiler & VGs

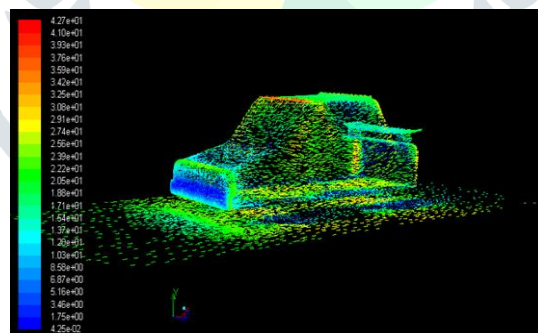


Figure 18 Velocity Vector on surface of car with Spoiler & VGs

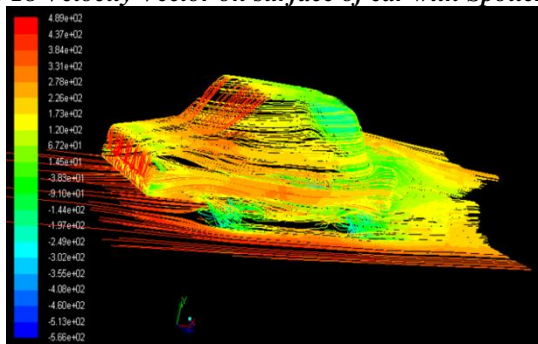


Figure 19 Total Pressure Path Lines on surface of car with Spoiler & VGs

## 7. Result

In the case of Spoiler with VGs are applied on the boot and rear side at roof of the base line car respectively with inclination angle  $12^\circ$ . The coefficient of drag is 0.3359 and the coefficient of lift is 0.1875. The percentage reduction in drag coefficient in comparison of base line car is 4.35% and in coefficient of lift is 18.83%. Hence drag & lift forces on the passenger car is reduced as proportional to  $C_D$  and  $C_L$  respectively. The comparative results between the baseline car and car with spoiler & VGs are shown in table: 5.

**Table 5 Comparison of drag and lift coefficient of baseline Passenger car with a model attached with Spoiler & VGs.**

Configurations	Drag Coefficient	% $C_D$ reduction from baseline	Lift Coefficient	% $C_L$ reduction from Baseline
Baseline	0.3512	0	0.2310	0
Spoiler with VGs	0.3359	4.35	0.1875	18.83

## 8. Conclusion

Computational fluid dynamics (CFD) simulations of the steady flow field around passenger car models with and without Spoiler & VGs both were presented and compared the simulated data to each other. The ANSYS-14.0 Fluent with the k-e steady model is used for the simulations of aerodynamics. In this analysis, the coefficient of drag has been reduced 4.35% and coefficient of lift is reduced 18.83%. Hence, the spoiler with VGs is the effective tool to reduce the drag force on vehicle.

The effects of different aerodynamic add-on devices on flow and its structure over a generic passenger car may be analysed using CFD approach. The objective is to reduce aerodynamic drag acting on the vehicle and thus improve the fuel efficiency of passenger car. Hence, the drag force can be reduced by using add on devices on vehicle and fuel economy, stability of a passenger car can be improved.

## References

- [1] Gilhaus, R. Hoffmann, Directional Stability, Aerodynamics of Road Vehicles, in: W.H. Hucho (Ed.), SAE International, Warrendale, PA, 1998.
- [2] J.R. Callister, A.R. George, Wind Noise, Aerodynamics of Road Vehicles, in: W.H. Hucho (Ed.), SAE International, Warrendale, PA, 1998.
- [3] F.R. Bailey, H.D. Simon, Future Directions in Computing and CFD, AIAA Paper 92-2734, 1992.
- [4] H. Taeyoung, V. Sumantran, C. Harris, T. Kuzmanov, M. Huebler, T. Zak, Flow-field simulations of three simplified vehicle shapes and comparisons with experimental measurements, SAE Transactions 106 (1996) 820–835.
- [5] Fluent 6.1 User's Guide, Fluent Inc., Lebanon, NH, 2003.
- [6] TGrid 3.4 User's Guide, Fluent Inc., Lebanon, NH, 2001.
- [7] R. B. Sharma and Ram Bansal, Drag and Lift Reduction on Passenger Car with Rear Spoiler, International Journal of Automobile Engineering Research and Development (IJAUERD) ISSN 2277-4785, Vol. 3, Issue 3, Aug 2013, PP 13-22 © TJPRC Pvt. Ltd.
- [8] Ram Bansal, R.B. Sharma, Drag Reduction of a Generic Passenger Car Using Vortex Generator with Different Yaw Angles, International Journal of Automobile Engineering Research and Development (IJAUERD) ISSN 2277-4785, Vol. 3, Issue 2, June 2013, PP 73-80, © TJPRC Pvt. Ltd.
- [9] B. Lokhande, S. Sovani, J. Xu, Computational Aero-acoustic Analysis of a Generic Side View Mirror, SAE 2003-01-1698, 2003.
- [10] Ahmad, K., Khare, M., Chaudhry, K.K., 2002. Model vehicle movement system in wind tunnels for exhaust dispersion studies under various urban street configurations. Journal of Wind Engineering and Industrial Aerodynamics 90, 1051 e 1064.
- [11] Abdul Ghani, S.A.A., Aroussi, A., Rice, E., 2001. Simulation of road vehicle natural environment in a climatic wind tunnel. Simulation Practice and Theory 8, 359–375.



- [12] Muyl, F., Dumas, L., Herbert, V., 2004. Hybrid method for aerodynamic shape optimization in automotive industry. *Computers and Fluids* 33, 849–858.
- [13] Hucho, Wolf-Heinrich., Sovran, Gino.”Aerodynamics of Road Vehicles” Annual. Reviews Inc. *Fluid Mech.* 1993.25 :485-537.
- [14] Yang, Z., and Khalighi, B., “CFD Simulation for Flow Over Pickup Trucks”, SAE Paper No. 2005-01-0547, 2005.

