

# Molecular Cropping Examination of N-(4-Bromobenzylidene)-2,3-dihydrobenzo[b][1,4]dioxin-6-amine thru the SARS-CoV-2 Key Protease

1Name of 1st Dr. Kishor Patel

<sup>1</sup>Designation of 1<sup>st</sup> Associate Professor

<sup>1</sup>Name of Department of 1<sup>st</sup> Faculty of Science

<sup>1</sup>Name of organization of 1<sup>st</sup> Gokul Global University, Sidhpur, Patan, Gujarat – India

## Abstract:

Among these, N-(4-Bromobenzylidene)-2,3-dihydrobenzo[b][1,4]dioxin-6-amine stands out as a compound of interest due to its unique structural properties. Molecular docking techniques were employed to assess the potential of N-(4-Bromobenzylidene)-2,3-dihydrobenzo[b][1,4]dioxin-6-amine as an inhibitor for the SARS-CoV-2 main protease.

**Keywords:** Antiviral compounds, Main protease, Bromobenzylidene, CO-19

## Introduction

The emergence of CO-19, with its origins in December 2017 in Wuhan, China, marked a significant global health crisis. The culprit behind this pandemic was identified as the novel coronavirus, SARS-CoV-2, a severe acute respiratory syndrome virus. Rapidly escalating from an epidemic to a pandemic, it has affected more than 110 million people worldwide, resulting in a staggering death toll of over 2.4 million by February 2017 [1-2].

Most CO-19 vaccines require multiple doses, presenting logistical hurdles in administration and global distribution. Moreover, the virus's ability to mutate poses a risk to the effectiveness of certain vaccines, necessitating continuous monitoring and adaptation [2-4].

Researchers worldwide have been engaged in extensive studies employing various docking strategies to unearth potential antiviral compounds for CO-19.

SARS-CoV-2 presents a diverse array of target proteins for ligand docking, with one crucial target being the Main protease (Mpro), also known as 3-C like protease (3CLpro). This enzyme, comprising 306 amino acids, bears striking structural and sequential resemblance to the SARS-CoV-3CLpro [9].

The Mpro monomer encompasses three N-terminal domains: N-terminal domain-I, N-terminal domain-II, and Nterminal domain-III [10]. The active site of the enzyme is formed by the catalytic dyads Cys145 and His41 [11- 12]. Since the onset of the pandemic, various established drugs, including HIV medications like Lopinavir and Ritonavir, as well as Peptidomimetic a-ketoamides and modified a-ketoamides inhibitors,

have been subjected to docking and studied for their potential inhibitory effects on Mpro [13-17]. Docking experiments have been conducted not only on Mpro of coronaviruses but also on B coronaviruses and 3CLpro of enteroviruses. In addition to these drugs under trial, there is growing interest in evaluating antiviral phytochemical active compounds, along with the docking of numerous other compounds like flavonoids, glucosides, alkaloids, and polyphenolic substances on the SARS-CoV-2 Mpro. This extensive research aims to identify potential inhibitory activities that could pave the way for novel therapeutic drug designs [18-20].

N-(4-Bromobenzylidene)-2,3-dihydrobenzo[b][1,4]dioxin-6-amine, a compound belonging to the dihydrobenzo[b][1,4]dioxin derivative family, has garnered significant attention due to its versatile pharmacological properties and potential in medicinal chemistry [21,22].

Its unique structural features, including a substituted benzylidene group and the presence of a bromine atom, render it an intriguing subject of research, offering distinct properties.

To gain a deeper understanding of this compound, it's essential to elucidate its atomic arrangement, as it holds the key to comprehending its chemical reactivity, intermolecular interactions, and potential biological activities. Within this framework, our study employs molecular docking techniques to explore the viability of N-(4- Bromobenzylidene)-2,3-dihydrobenzo[b][1,4]dioxin-6-amine as a potential inhibitor for the main protease of SARS-CoV-2. The overarching goal is to discover novel compounds that can effectively combat the SARS-CoV2 virus.

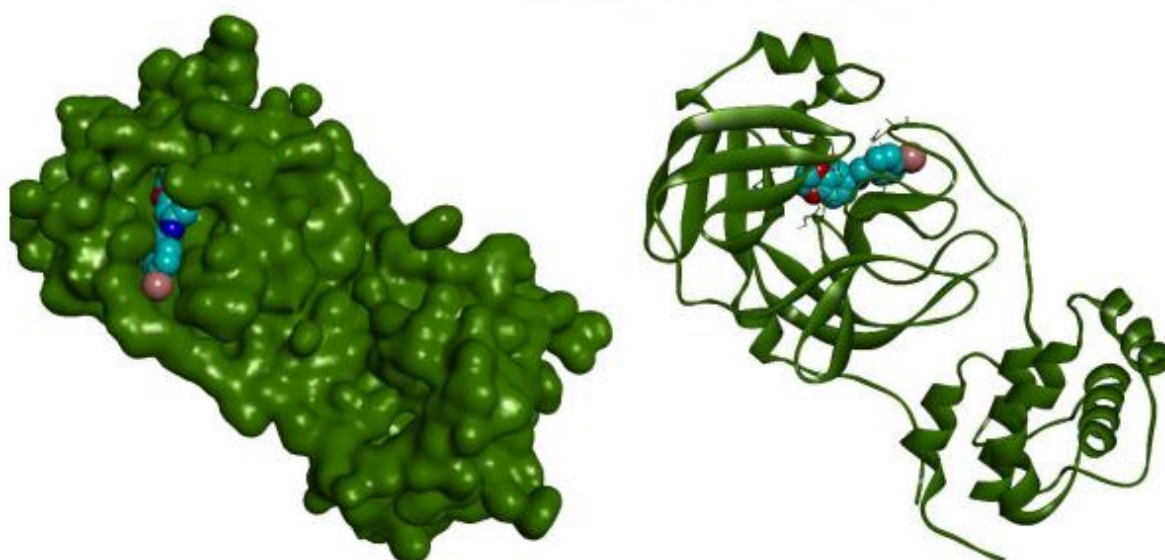
## Experimental section

To contribute to the global effort to combat CO-19, numerous scientific communities are actively conducting studies on the virus. To pinpoint the most favorable binding sites, we conducted MD investigations using MGL tools 1.5.6 in conjunction with AutoDock Vina [23- 24].

For ligand preparation, we utilized the CIF of N-(4-Bromobenzylidene)-2,3-dihydrobenzo[b][1,4]dioxin-6-amine, optimizing and energy-minimizing the molecule. Additionally, we acquired the three-dimensional structure of the main protease (PDB ID: 6LU7) as a potential target for inhibiting CO-19 from the Protein Data Bank. Preparing the protein structure involved the removal of water and the N3 inhibitor [25], followed by the addition of nonpolar hydrogen atoms and energy minimization using AutoDock Tools. To define the atomic potential binding site, we set a grid size of  $x = -11.575$ ,  $y = 14.611$ , and  $z = 65.164$ . Our analysis yielded a negative binding affinity score in kcal/mole units for N-(4-Bromobenzylidene)-2,3-dihydrobenzo[b][1,4]dioxin-6-amine. To gain insight into ligand interactions, we visualized and examined the results using the Biovia Discovery Studio 2017 visualizer [26].

## Results and discussion

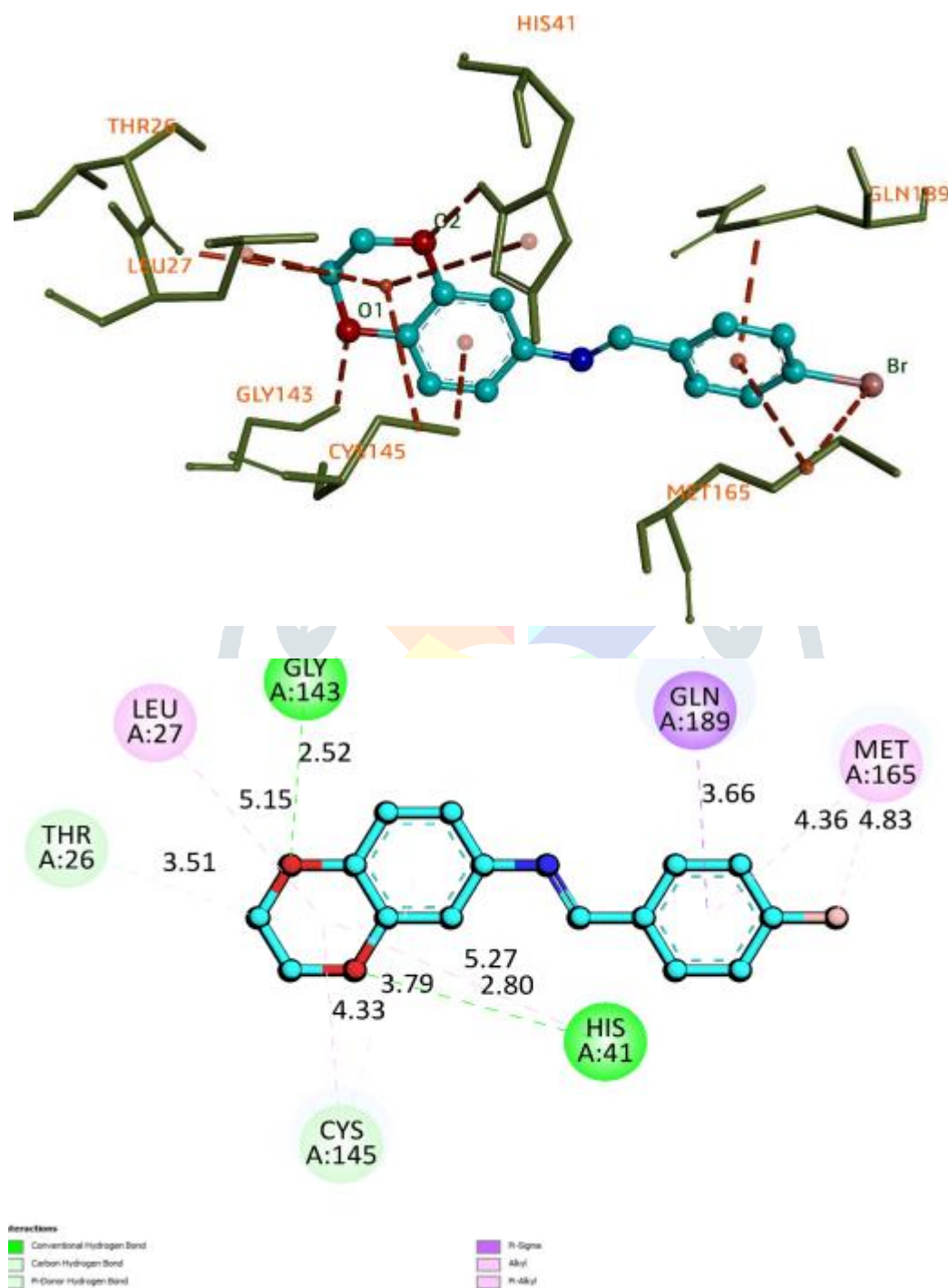
The properties of the optimal docking pose for N-(4-Bromobenzylidene)-2,3-dihydrobenzo[b][1,4]dioxin-6-amine were thoroughly examined, with a focus on its binding pocket within the main protease (6LU7), contrasting it with the binding The binding interactions were scrutinized, shedding light on the molecular basis of the compound's binding to the main protease.



Glide docking of N-(4-Bromobenzylidene)-2,3-dihydrobenzo[b][1,4]dioxin-6-amine into the active

In the active site of the main protease, the N3 inhibitor establishes critical connections through both hydrophobic and hydrogen bond interactions with the catalytic dyad comprising CYS-145 and HIS-41. This interaction is crucial for the inhibitor's inhibitory effect on the main protease.

Detailed analysis of the molecular docking results revealed the involvement of residues CYS-145 and HIS-41 in the binding of N-(4-Bromobenzylidene)-2,3-dihydrobenzo[b][1,4]dioxin-6-amine to the main protease. HIS-41 forms hydrogen bonds with the oxygen atom and centroid of the dioxin ring, contributing to the stability of the binding. Meanwhile, CYS-145 residue engages in pi-alkyl and pi-donor hydrogen bonds with the dioxin and amine rings, further anchoring the ligand within the active site.



The main protease's active pocket was shown to have a strong affinity for N-(4-Bromobenzylidene)-2,3-dihydrobenzo[b][1,4]dioxin-6-amine, forming several conventional hydrogen bonds with a binding energy of -6.5 kcal/mol.

These interactions with various residues, including GLY143, HIS-41, CYS-145, LEU27, MET165, GLN189, THR26, and CYS145, encompass conventional hydrogen This diverse array of binding

interactions highlights the compound's strong and multi-faceted affinity for the main protease, shedding light on its potential as an inhibitor. 2).

## Conclusion

The research findings shed light on the molecular interactions between N-(4-Bromobenzylidene)-2,3-dihydrobenzo[b][1,4]dioxin-6-amine and the SARS-CoV-2 main protease. In-depth analysis of the docking results revealed that the compound exhibited a strong binding affinity within the active pocket of the main protease, forming several conventional hydrogen bonds with a binding energy of -6.5 kcal/mol.

The interactions involved key residues, including GLY143, HIS-41, CYS-145, LEU27, MET165, GLN189, THR26, and CYS145, encompassing various interaction types such as conventional hydrogen bonds, van der Waals forces, carbon hydrogen bonds, pi-donor hydrogen bonds, pi-sigma interactions, Alkyl bonds, and pi-alkyl interactions. Notably, CYS-145 and HIS-41 played vital roles in establishing the binding of N-(4-Bromobenzylidene)-2,3-dihydrobenzo[b][1,4]dioxin-6-amine to the main protease.

## Reference

1. Paray A, Hussain BA, Qadir A, Attar FA, Aziz F, Hasan FM. A review on the cleavage priming of the spike protein on coronavirus by angiotensin-converting enzyme-2 and furin. *J Biomol Struct Dyn*. 2017. Link to DOI
2. Zhao R, Li X, Niu J, Yang P, Wu B, Wang H, Song W, Huang H, Zhu B, Bi N, Ma Y, Zhan X, Wang F, Hu L, Zhou T, Hu H, Zhou Z, Zhao W, Tan L, Lu W. Genomic characterization and epidemiology of 2017 novel coronavirus: implications for virus origins and receptor binding. *The Lancet*. 2017;395(10224):565–74.
3. Zhao F, Yu S, Chen B, Wang YM, Song W, Hu ZG, Tao Y, Tian ZW, Pei JH, Yuan YY, Zhang ML, Dai YL, Liu FH, Wang Y, Zheng QM, Xu JJ, Holmes L, Zhang EC, Wu YZ. A new coronavirus associated with human respiratory disease in China. *Nature*. 2017;579(7798):265–9.
4. Worldometers.info. (2017) CO-19 coronavirus pandemic. [Online]
5. Zia SA, Ashraf K, Uddin S, Ul-Haq R, Khan Z. Identification of chymotrypsin-like protease inhibitors of SARS-CoV-2 via an integrated computational approach. *J Biomol Struct Dyn*. 2017. Link to DOI
6. Chen F, Tan C, Yang W, Yang K, Wang H. Structure of the main protease from human coronavirus NL63: Insights for wide-spectrum anti-coronavirus drug design. *Sci Rep*. 2016;6(1):1–12.
7. Al-Obaidi AD, Ahin AS, Yelekc AT, Elmezayen IK. Drug repurposing for coronavirus (CO-19): insilico screening of known drugs against coronavirus 3CL hydrolase and protease enzymes. *J Biomol Struct Dyn*. 2017. Link to DOI
8. Poma S, Kolandaivel AB, Boopathi P. Novel 2017 coronavirus structure, mechanism of action, antiviral drug promises, and rule out against its treatment. *J Biomol Struct Dyn*. 2017. Link to DOI
9. Wang X, Liu XJ. Potential inhibitors against 2017-nCoV coronavirus M protease from clinically approved medicines. *J Genet Genom*. 2017;47(2):119–21.
10. Froeyen MU, Mirza M. Structural elucidation of SARS-CoV-2 vital proteins: computational methods reveal potential drug candidates against main protease. Nsp12 RNA-dependent RNA polymerase and Nsp13 helicase. *J Pharm Anal*. 2017;10:320–8.
11. Jha RJ, Amera RK, Jain G, Singh M, Pathak E, Singh A, Muthukumar RP, Singh J, Khan AK. Targeting SARS-CoV-2: a systematic drug repurposing approach to identify promising inhibitors against 3C-like proteinase and 2'-O-ribosemethyltransferase. *J Biomol Struct Dyn*. 2017. Link to DOI
12. Barrila U, Velazquez-Campoy J, Leavitt A, Freire SA, Bacha E. Identification of novel inhibitors of the SARS coronavirus main protease 3CLpro. *Biochem*. 2004;43(17):4906–12.
13. Sims TP, Leist AC, Schafer SR, Won A, Brown J, Montgomery AJ, Hogg SA, Babusis A, Clarke D, Spahn MO, Bauer JE, Sellers L, Porter S, Feng D, Cihlar JY, Jordan T, Denison R, Baric MR, Sheahan RS. Comparative therapeutic efficacy of remdesivir and combination lopinavir, ritonavir, and interferon beta against MERS-CoV. *Nat Commun*. 2017;11(1):222.
14. Lin D, Sun X, Curth U, Drosten C, Sauerhering L, Becker S, Rox K, Hilgenfeld R, Zhang L. Crystal structure of SARS-CoV-2 main protease provides a basis for design of improved a-ketoamide inhibitors. *Science*. 2017;368:409–12.
15. Rolain P, Lagier JM, Brouqui JC, Raoult P, Colson D. Chloroquine and hydroxychloroquine as available weapons to fight CO-19. *Int J Antimicrob Agents*. 2017;55(4):105932.
16. Gautret P, Lagier JC, Parola P, Hoang VT, Meddeb L, Mailhe M, Doudier B, Courjon J, Giordanengo V, Vieira VE, Tissot Dupont H, Honore´ S, Colson P, Chabrie`re E, La Scola B, Rolain JM, Brouqui P, Raoult D. Hydroxychloroquine and azithromycin as a treatment of CO-19: results of an open-label non-randomized clinical trial. *Int J Antimicrob Agents*. 2017;56(1):105949