



The Effect of Amount of Graphene on sorption, diffusion and permeation for the study of Barrier properties of Epoxy-Graphene nano composites

Dr. Sangeeta B. Kulkarni
Govt. First Grade college & PG Centre
Kumareshwaranagar, DHARWAD
Karnataka – 580008.

Email id: sangeeta_bk1234@yahoo.com

ABSTRACT

The water sorption and diffusion in (reduced) graphene epoxy nanocomposites of various compositions (0.75 & 1.5g) is analyzed. Water sorption of epoxy membrane can be significantly reduced by the inclusion of graphene oxide sheets due to the formation of an extensive hydrogen bonding network between oxygenated groups. Crosslinking of epoxy groups with divalent metal ions and the presence of reduced graphene oxide can further improve the swelling resistance due to the strong interactions between metal ions, epoxy group, and filler sheets. Depending on conditions and composition, the overall water barrier properties of epoxy graphene nanocomposites improve upon (reduced) graphene oxide filling, making them attractive for moisture barrier coating applications. Water sorption kinetics in all epoxy composites indicate a non-Fickian diffusion process. In addition, the water barrier properties of epoxy-graphene oxide composites can be adequately predicted using permeation coefficients calculated from sorption and diffusion coefficients.

Introduction.

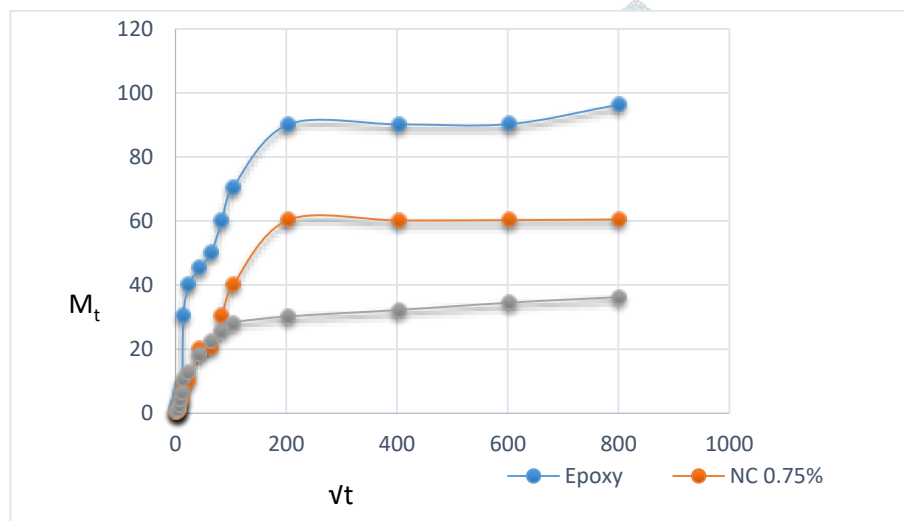
The change in the concentration and morphology of nano particles had great effect on the final properties of traditional polymer resins. The development of novel nano composites as advanced polymer with graphene nano particles have unique mechanical properties their stiffness and strength value which have limited indoor applications due to relative sensitivity to environmental conditions such as moisture and temperature. The decrease in the diffusion coefficient of moisture in epoxy field with graphene (0.75 and 1.50%) was found to increase with temperature from 20 to 40 degree centigrade this was mainly due to reduction in revalue, high cross link density and lower segmental mobility in the nano composites. The greater plasticization effect which leads to similar glass transition temperature both epoxy and nano composites show decrease in equilibrium moisture content with addition of graphene nano particles. The dispersion and chemical functionalization of graphene nano particles in to epoxy improve the maximum barrier characteristics and stability against environmental factors..

METHOD.

All the epoxy and epoxy graphene were conditioned in a desiccator with silica gel at relative humidity of around 24% to remove the adhered moisture before starting the moisture sorption test till there is a constant mass with each specimen.

The test samples are then placed in desiccators at relative humidity of 47% 73% and 91% which is achieved by using saturated solution KCNS, KCL and NA₂ SO₄ respectively after all the samples reached the equilibrium moisture content the moisture sorption experiment were performed at temperature at temperature 20 degree to 40 degree respectively the specimens were periodically removed from desiccator and weighed by using METTLER TOLEDO balance with precision of 0.05mg

Figure-1 sorption kinetics of epoxy specimens for moisture absorption for the epoxy and the epoxy filled with 0.75wt and 1.5 wt % of nanoparticles in an atmosphere with 91% during moisture absorption



Results and Discussion.

The classical Fick's model use usually applied to describe the moisture absorption curves of epoxy and epoxy graphene nano composites

In 3D mode the moisture content absorbed for each specimen $w(t)$ in the specimen is expressed as

$$w(t) = (w_{\infty} - w_0) \frac{8}{\pi^2} \sum_{k=1}^{\infty} \sum_{n=1}^{\infty} \sum_{m=1}^{\infty} \frac{[1-(-1)^k]^2 [1-(-1)^n]^2 [1-(-1)^m]^2}{k^2 n^2 m^2} \exp(-\lambda_{kmn}^2 D_t)$$

w_t and w_{∞} are the initial and equilibrium moisture content basically, in Equation (1), there are two independent parameters: the diffusion coefficient D and the equilibrium moisture content w_{∞} .

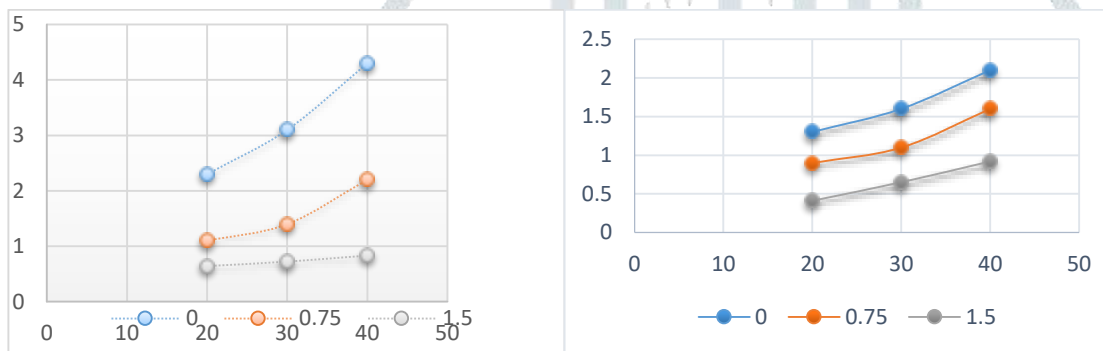
The maximal moisture content over sorption test at equilibrium and the time varying moisture content (in %) is obtained by time dependent diffusion expression.

$$D_t = D_0 \cdot \exp(-yt)$$

Figure-1 sorption kinetics of epoxy specimens for moisture absorption for the epoxy and the epoxy filled with 0.75wt and 1.5 wt % of nano-particles in an atmosphere with 91% during moisture absorption.

Amount of Graphene	Temperature	D-Values From Fick's equation 10-6		
		0.00	20	2.30
0.75	30	3.10	4.00	0.72
1.50	40	4.30	2.20	0.33
		Dvalues from	Time variable diffusion equation	
0.00	20	1.30	1.60	2.10
0.75	30	0.90	1.10	1.60
1.50	40	0.41	0.65	0.92

Variation of D with temperature.



The current purpose was to evaluate the Fick's model which correlates very well with the experimental data as well as also for the case of moisture absorption

For the experimental data for moisture absorption both Fick's model and the model with time-variable diffusion coefficient were applied. Obviously, the application of the model with time-variable diffusion coefficient provided better description of the experimental data than the Fick's model and were used for further analysis of the sorption characteristics during the absorption.

In the early stages all sorption processes were characterized by similar trends with a considerably higher sorption rate and a progressively slower water uptake as the equilibrium plateau was approached.

It is observed that the diffusion coefficients both Fick's model and the model with time-variable diffusion of epoxy graphene nano composites are lower when compared to neat epoxy resins similarly permeation coefficients calculated from product of sorption and diffusion coefficients.

similar variation howed for epoxy graphene nano composites which accounts for the improved barrier properties for epoxy graphene nano composites.

Conclusion

The rate of diffusion and the highest equilibrium moisture content in both epoxy and nano composites had the intermediate effect when compare to the moisture absorption. During the absorption of moisture the structural changes and swelling rate is considerably reduced.

In all sorption tests the diffusion coefficients and equilibrium moisture content are decreased for epoxy filled with nano particles when compare to neat epoxy which may be due to reduced mobility of polymer chain and decreased free volume allowing the water molecules to defuse through the nano composites.

1. Goumri, M.; Lucas, B.; Ratier, B.; Baitou, M. Electrical and optical properties of reduced graphene oxide and multiwalled carbon nanotubes based nanocomposites: A comparative study. *Opt. Mater.* 2016, 60, 105–113. [CrossRef]
2. Treacy, M.M.J.; Ebbesen, T.W.; Gibson, J.M. Exceptionally high Young's modulus observed for individual carbon nanotubes. *Nature* 1996, 381, 678–680. [CrossRef]
3. Grammatikos, S.A.; Evernden, M.; Mitchels, K.; Zafari, B.; Mottram, J.T.; Papanicolaou, G.C. On the response to hygrothermal aging of pultruded FRPs used in the civil engineering sector. *Mater. Des.* 2016, 96, 283–295. [CrossRef]
4. Lin, Y.C.; Chen, X. Moisture sorption-desorption-resorption characteristics and its effect on the mechanical behavior of the epoxy system. *Polymer* 2005, 46, 11994–12003. [CrossRef]
5. Sousa, J.M.; Correia, J.R.; Cabral-Fonseca, S. Durability of an epoxy adhesive used in civil structural applications. *Constr. Build. Mater.* 2018, 161, 618–633. [CrossRef]
6. Prolongo, S.G.; Gude, M.R.; Ureña, A. Water uptake of epoxy composites reinforced with carbon nanofillers. *Compos. Part A* 2012, 43, 2169–2175. [CrossRef]
7. Starkova, O.; Buschhorn, S.T.; Mannov, E.; Schulte, K.; Aniskevich, A. Water transport in epoxy/MWCNT composites. *Eur. Polym. J.* 2013, 49, 2138–2148. [CrossRef]
8. Starkova, O.; Mannov, E.; Schulte, K.; Aniskevich, A. Strain-dependent electrical resistance of epoxy/MWCNT composite after hydrothermal aging. *Compos. Sci. Technol.* 2015, 117, 107–113. [CrossRef]
9. Glaskova-Kuzmina, T.; Aniskevich, A.; Martone, A.; Giordano, M.; Zarrelli, M. Effect of moisture on elastic and viscoelastic properties of epoxy and epoxy-based carbon fibre reinforced plastic filled with multiwall carbon nanotubes. *Compos. Part A* 2016, 90, 522–527. [CrossRef]
10. Skwarek, E.; Bolbukh, Y.; Tertykh, V.; Janusz, W. Electrokinetic properties of the pristine and oxidized MWCNT depending on the electrolyte type and concentration. *Nanoscale Res. Lett.* 2016, 11, 166. [CrossRef] *Polymers* 2019, 11, 1383 13 of 14
11. Technical Data Sheet for SA 659258 by Sigma Aldrich. Available online: <https://www.sigmaaldrich.com> (accessed on 27 June 2019).
12. Technical Data Sheet for NC7000™ by Nanocyl. Available online: <https://www.nanocyl.com> (accessed on 27 June 2019).