

Microstructural Characteristics of Microwave Processed Ni-10% Cr₃C₂ Composite Cladding

¹Sandeep Bansal, ²Jonty Mago, ³Dheeraj Gupta, ⁴Vivek Jain

¹PhD Research Scholar, ²M.E Student, ³Associate Professor, ⁴Associate Professor

¹Mechanical Engineering Department,

¹Thapar Institute of Engineering & Technology, Patiala, India.

Abstract : In the current study microwave energy has been used to develop composite clad of Ni+10% Cr₃C₂ (by wt%) on SS-316L substrate in a domestic microwave oven, generally used for low-temperature applications, having a frequency range of 2.45GHz and 900W power. The developed composite clad are characterized by various metallurgical and mechanical techniques such as SEM/EDS, XRD, and Vickers microhardness. The developed composite clad of thickness 750µm, having fine microstructure without any visible cracks and significantly less porosity. The microhardness of developed composite clad has evaluated 430±65 HV. The various hard carbide phases Cr₃Si, NiC, Cr₃Ni₂SiC, CrSi₂, SiC, and FeNi₃ have been confirmed from XRD examination.

Keywords - Cr₃C₂, Composite Clad, Characterization, EWAC, Microwave Energy

I. INTRODUCTION

Hydropower operated industries face huge revenue loss due to cavitation erosion wear of engineering components. Many efforts have been made by researchers to reduce cavitation erosion wear in hydropower operated industries. Surface modification of engineering components is cost effective and efficient method to handle this problem. In this method surface of the substrate has been modified or coated/cladded with some wear resistant material. The surface of engineering components can be modified with many techniques like plasma spraying, welding, thermal spraying, laser cladding, etc. [1-4]. Among all these techniques laser cladding is extensively used in industries due to its characteristic of good metallurgical bonding between cladding and substrate. Although, the laser is an intense heat source and direct application of laser onto the substrate, and then transfers inwards through conventional heat mode, causes thermal distortion due to the large thermal gradient.

Moreover, the initial set up cost of the laser is very high, and the processing of large areas is not cost effective [5-6]. The problems of existing surface modification techniques motivate researchers to develop a new technique which can cover all the limitations of existing techniques. In recent years' microwave processing of materials has attracted researchers due to its versatile properties like low set up cost, high deposition rate, rapid heating, selective heating and volumetric heating which leads to uniform and fine grain structure. The processing time can be lowered down to a great extent by this technique [7]. Among all other grades of austenitic stainless steel grades, SS-316 is widely used in the food and hydraulic industries due to its excellent corrosion and wear resistance. Austenitic stainless steels are generally less hard which limits their use in severe wear conditions. However, the surfaces which are more prone to degrade due to cavitation erosion wear of these grades of steels can be modified by coating/cladding with wear-resistant materials through microwave irradiation, and the working life under wear conditions can be increased significantly. Many authors have reported successful development of wear-resistant claddings through this novel route [8-10].

Generally, the combination of hardness and toughness is required to absorb the impact energy produced during the cavitation phenomenon. Many metal matrixes (Cobalt and Nickel based) have been used along with different reinforcement materials (Silicon carbide, Chromium carbide, and Tungsten carbide) for developing anti-wear composite claddings. Chromium carbide is frequently used as reinforcement material due to its excellent corrosion resistance, and Nickel is widely used as a soft matrix due to its excellent oxidation resistance at elevated temperatures. The purpose of the current study is to develop Ni+10%Cr₃C₂ (by wt%) composite clad through microwave irradiation in a domestic microwave oven, generally preferred for low-temperature applications, having frequency 2.45GHz and 900W. The developed composite clad are characterized by different mechanical and metallurgical techniques like XRD, SEM/EDS, and Vickers microhardness.

II. EXPERIMENTATION

2.1 Details of Materials

In the present experimental study austenitic steel of grade, SS-316 is used. The rolled plate is machined to dimensions 10x10x6 mm. The Ni-based EWAC is used as the soft metal matrix, and Chromium Carbide (Cr₃C₂) is used as a reinforcing agent. The surface morphology of both the powders has been shown in SEM images in figure 1 (a) & (b) respectively. The SEM images confirm the spherical surface morphology of EWAC powder and knife shaped surface morphology of Cr₃C₂ powder. The XRD spectrum shown in figure 2, exhibits the presence of Ni, Cr, and Si phase in EWAC powder and multiple Cr₃C₂ phases in chromium carbide powder. Table 1 contains the details of the chemical composition of raw clad powders and substrate. The preheating of raw clad powders, at 180°C, has been done to remove the presence of any moisture content. The desired properties of composite powders (Ni+10% Cr₃C₂) has been obtained by mixing the preheated powders in a mechanical mixture.

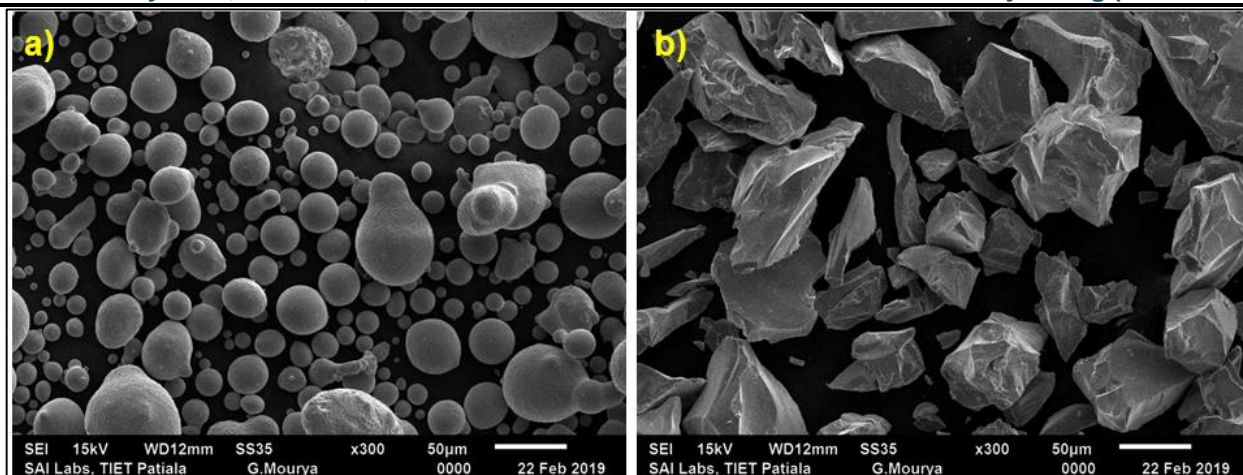


Figure 1: SEM images (a) Cr₃C₂ Powder (b) EWAC Powder

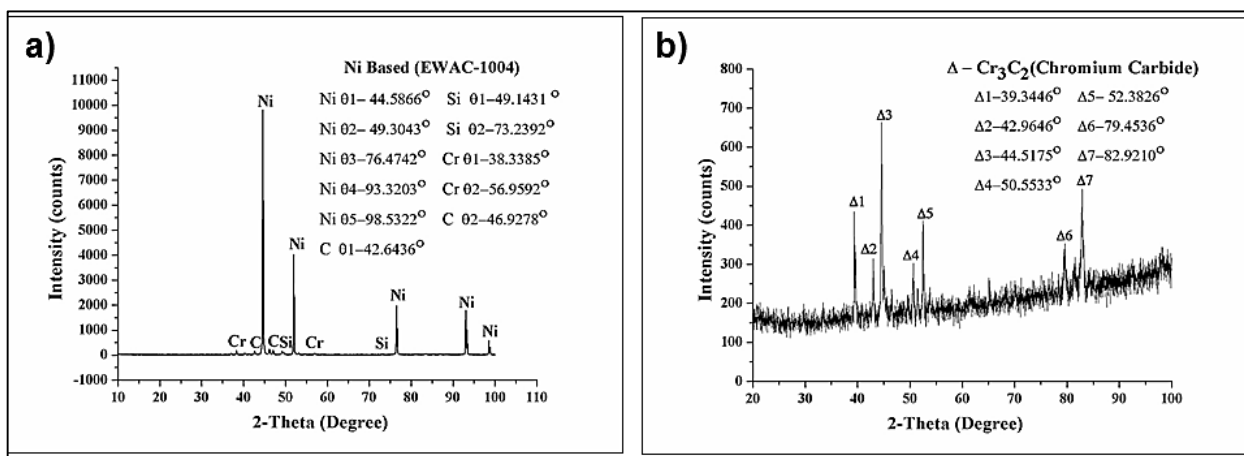


Figure 2: The XRD spectrum of (a) Cr₃C₂ Powder (b) EWAC Powder

Table: 1 Chemical Composition of Raw Materials by Weight Percentage

Materials	Chemical Elements								
	P	C	Si	S	Mn	Mo	Ni	Cr	Fe
SS-316	0.041	0.024	0.281	0.069	1.22	1.99	9.83	17.0	Bal.
Cr ₃ C ₂	-	31.8	-	-	-	-	-	68.2	-
EWAC	-	-	3.88	-	-	-	Bal.	2.07	-

2.2 Clad Development and Characterization

Prior to the formation of clad, the substrate is cleaned and polished to remove any dirt and oxide layer. The preheated powder is placed over SS-316 substrate. The thickness of clad powder is tried to maintain a uniform. The substrate is then placed on a refractory brick. The mechanism of Microwave Hybrid Heating (MHH) has been used to developed composite clad. The details of MHH have been reported by many authors [11-15]. Figure 3 (a) & 3 (b) shows the schematic and actual set up of clad formation through MHH route, respectively. The parameters used for clad formation are tabulated in table 2.

Table: 2 Parameters Used for Developing Composite Clad

Parameters	Applicator	Exposure Time	Exposure Power	Frequency	Cladding Powder	Susceptor	Separator	Preheating Temp.
Description	Multimode	420 Sec	900W	2.45GHz	Ni+ 10%Cr ₃ C ₂	Charcoal	Alumina	180°C



Figure 3: Clad deposition process through MHH (a) Schematic Principal (b) Actual Setup

The composite clad of Ni+10% Cr₃C₂ were developed in 420 seconds exposure of microwave irradiation. The developed composite clad were sectioned along with thickness with the low-speed diamond cutter for characterisation. Further, the developed composite clads were polished with emery papers of different grits and finally polished with diamond paste to get mirror polish. The Vickers microhardness tester was used for evaluation of microhardness of developed composite clad. The different phases of developed composite clad were analyzed using XRD technique. The scan rate and scan range were used 1° per min and 30° to 100° respectively. Prior to the microstructural investigation, the developed composite clad were etched using Nital solution. The backscattered microscopy (BSE) technique was used for microstructural investigation. Further, for confirmation of different elements, EDS (energy dispersive spectroscopy) technique was used.

III. RESULTS & DISCUSSION

3.1 Microhardness Study

The hardness of clad region, generally, enhanced by the presence of hard carbide phases in the clad region. To establish this fact Vickers microhardness testing of developed composite clad has been evaluated. The indentations have been taken at 80µm approx. distance starting from the top of the clad surface. The graph in figure 4, shows that non-uniformity which could be due to the indentations has been taken on the hard carbide phase as well as on soft matrix. The observed microhardness value exhibited 430±65 HV. The higher value of microhardness reveals that these cladding can be used in anti-wear applications.

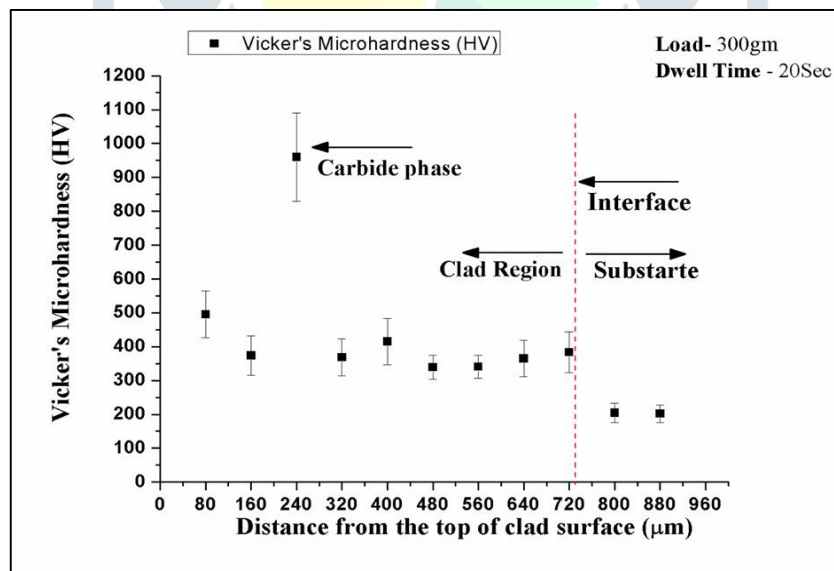


Figure 4: Vickers Microhardness Values of Developed Composite Clad

3.2 XRD Analysis

The XRD spectra of developed composite clad have been shown in figure 5. The phases Cr₃Si, NiC, Cr₃Ni₂SiC, CrSi₂, SiC, FeNi₃ were confirmed from XRD spectra. Due to the high temperature involved in microwave heating, the decomposition of Cr₃C₂ into Cr and free C took place. Further, the reaction of this free carbon with Si and Ni formed phases SiC and NiC. Some complex carbide Cr₃Ni₂SiC has also been formed. The formation of FeNi₃ confirms the dilution of clad material with the base material. Moreover, the presence of phases Cr₃Si, CrSi₂ confirm this statement of metallurgical bonding with minimum dilution as Si present in base material reacts with Cr present in the clad powder. The presence of hard phases also confirmed from microhardness study.

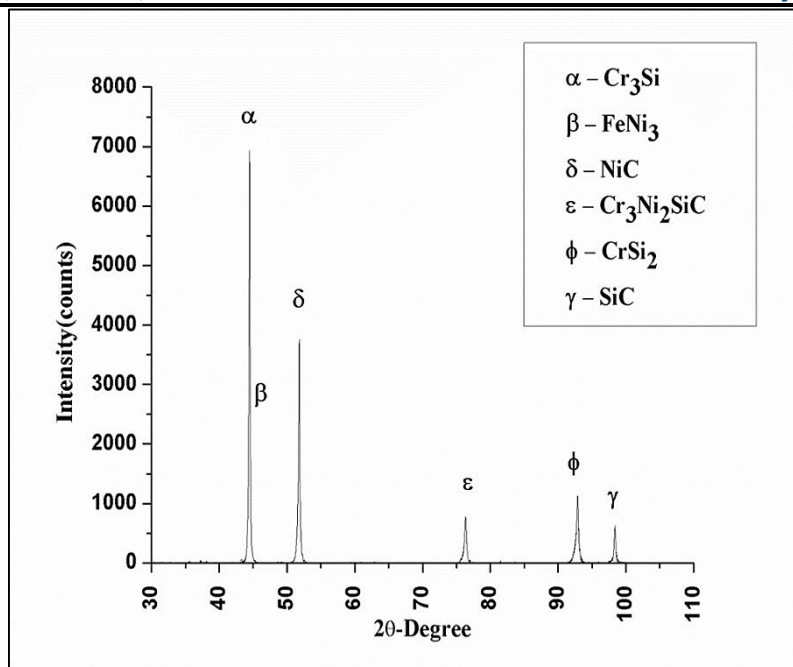


Figure 5: XRD Study of Developed Composite Clad

3.3 Microstructure Study

The quality of cladding highly depends upon microstructure. A good clad must be free from any defects and voids. The metallurgical bonding of cladding must be good with the substrate. The cross-section of developed composite clad has been shown in figure 6. The developed composite clad of approx. thickness 750 μ m is free from any visible cracks and voids (figure 6(a)). The zoomed views of the clad region in figure 6 (b) shows the random dispersion of carbide particles in a soft Ni matrix. The grey and black views of developed composite clad represents the soft Ni matrix and reinforced carbide particles, respectively.

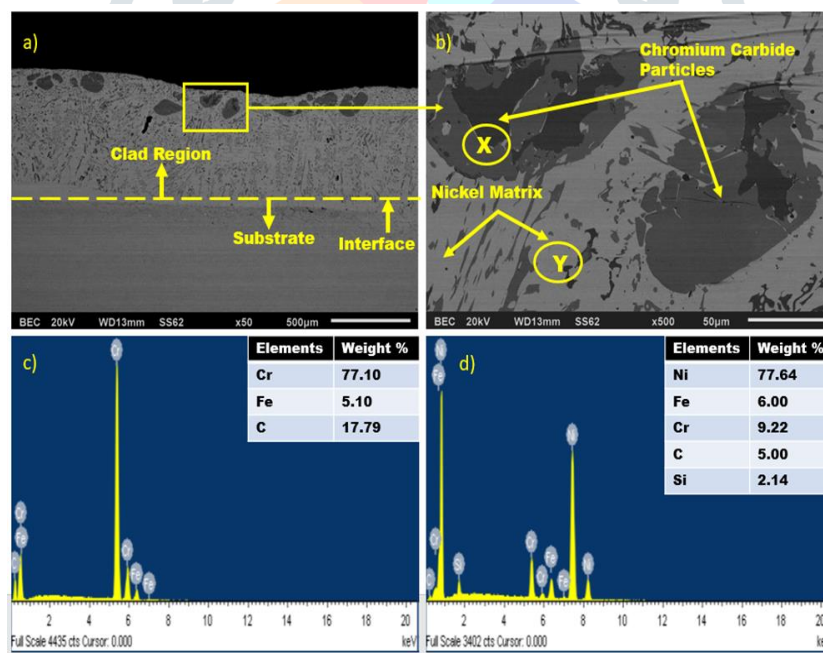


Figure 6: BSE (Backscattered electron) images of (a) Clad region (b) Zoomed view of the clad region
EDS (Energy dispersive spectroscopy) of (c) Carbide Phase (d) Nickel Matrix Phase

To confirm the elemental composition in different regions, EDS at different points of developed clad has been done. The results reveal the presence of Chromium carbide particles (point X) in the black region (figure 6(c)) and soft Ni matrix (point Y) in the grey region (figure 6(d)). The combination of hardness and toughness in the developed composite clad has been confirmed by the presence of hard carbide as well as the soft metal matrix.

IV. CONCLUSION

In the current investigation composite clad of Ni+10% Cr₃C₂ were developed successfully by microwave irradiation on austenitic stainless steel grade (SS-316). The concluded points from the present investigation are:

1. The developed composite clad of approximately 750 μ m, with microwave exposure of frequency 2.45 GHz and 900w power, were free from any defects and visible cracks.
2. The Vickers microhardness test exhibited that the average microhardness value of developed composite clad (Ni+10% Cr₃C₂) was 430 \pm 65 HV.
3. The presence of phases Cr₃Si, NiC, Cr₃Ni₂SiC, CrSi₂, SiC, and FeNi₃ in developed composite confirmed from the XRD study.
4. The microstructure study exhibits that the reinforced carbide particles dispersed randomly in soft Ni matrix

V. ACKNOWLEDGMENT

This research is financially supported by the SERB (Science & Engineering research board), INDIA. Under the project titled "Development of Microwave Processed Cavitation Erosion Cladding" (Grant No. EMR/2016/007694).

REFERENCES

- [1] S. Adachi, N. Ueda, Surface Hardness Improvement of Plasma-Sprayed AISI 316L Stainless Steel Coating by Low-Temperature Plasma Carburizing, *Adv. Powder Technol.* 24 (2013) 818–823.
- [2] R.M. Saoubi, O. Alm, J.M. Andersson, H. Engström, T. Larsson, M.P. Johansson-jöesaar, M. Schwind, Microstructure and wear mechanisms of texture-controlled CVD α -Al₂O₃ coatings, *Wear.* 376–377 (2017) 1766–1778.
- [3] S. Ahmad, P. Vo, S. Yue, R.R. Chromik, Erosive Wear Behavior of Cold-Sprayed Ni-WC Composite Coating, *Wear.* 376–377 (2017) 566–577.
- [4] N.G. Krishna, C. Thinaharan, R.P. George, N. Parvathavarthini, U.K. Mudali, Surface Modification of Type 304 Stainless Steel With Duplex Coatings for Corrosion Resistance in Sea Water Environments, *Surf. Eng.* 31 (2015) 39–47.
- [5] C.T. Kwok, H.C. Manb, F.T. Cheng, Cavitation Erosion and Pitting Corrosion Behaviour of Laser Surface-Melted Martensitic Stainless Steel UNS S42000, *Surf. Coatings Technol.* 126 (2000) 238–255.
- [6] C. Lee, H. Park, J. Yoo, C. Lee, W. Woo, S. Park, Residual Stress and Crack Initiation in Laser Clad Composite Layer with Co-Based Alloy and WC + NiCr, *Appl. Surf. Sci.* 345 (2015) 286–294.
- [7] S. Singh, D. Gupta, V. Jain, A.K. Sharma, Microwave Processing of Materials and Applications in Manufacturing Industries: A Review, *Mater. Manuf. Process.* 30 (2015) 1–29.
- [8] S. Kaushal, D. Gupta, H. Bhowmick, Investigation Of Dry Sliding Wear Behavior Of Ni – SiC Microwave Cladding, *J. Tribol.* 139 (2018) 1–9.
- [9] S. Kaushal, V. Sirohi, D. Gupta, H. Bhowmick, S. Singh, Processing and Characterization of Composite Cladding Through Microwave Heating on Martensitic Steel, *J Mater. Des. Appl.* 0 (2015) 1–7.
- [10] S. Kaushal, D. Gupta, H. Bhowmick, On Surface Modification of Austenitic Stainless Steel Using Microwave Processed Ni/Cr₃C₂ Composite Cladding, *Surf. Eng.* 0 (2017) 1–9.
- [11] D. Gupta, A.K. Sharma: A Method of Cladding-Coating of Metallic and Non-Metallic Powders On Metallic Substrate by Microwave Irradiation. Indian Patent application 527/Del (2010).
- [12] D. Gupta, A.K. Sharma, Investigation on Sliding Wear Performance of WC10Co2Ni Cladding Developed Through Microwave Irradiation, *Wear.* 271 (2011) 1642–1650.
- [13] D. Gupta, A.K. Sharma, Development And Microstructural Characterization of Microwave Cladding on Austenitic Stainless Steel, *Surf. Coat. Technol.* 205 (2011) 5147–5155.
- [14] D. Gupta, A.K. Sharma, D. Gupta, A.K. Sharma, Microstructural Characterization of Cermet Cladding Developed Through Microwave Irradiation, *ASM Int.* 21 (2012) 2165–2172.
- [15] S. Zafar, A.K. Sharma, Materials Characterization Development and Characterisations of WC – 12Co Microwave Clad, *Mater. Charact.* 96 (2014) 241–248.