

Simulation of Grid Integrated Solar Photovoltaic System

¹Sanny N. Khalas, ²Hiren M. Patel, ³Fagun N. Upadhyay

^{1,2,3} Lecturer, Electrical Department, VPMP Polytechnic, Gandhinagar, Gujarat, India

Abstract—This paper focus on the grid connected solar photovoltaic energy conversion system modeling and control in MATLAB Software. In the modeling part photovoltaic systems have SPV array, boost converter, MPPT technique, inverter, filter and transformer. It also shows the detailed representation of the main components of the SPV system. The MPPT technique explained in this paper is Incremental Conductance based on hill climbing method which helps to extract maximum power from the SPV system. This paper will help the researchers to understand the method available for grid integration of solar photovoltaic system as well as to model and control such system for better results.

Keywords—Solar Photovoltaic system, Incremental Conductance MPPT, DC-DC converter, Solar Photovoltaic (SPV), Photovoltaic (PV) cell, Inverter.

I. INTRODUCTION

The main design objective of photovoltaic (PV) systems has been, for a long time, to extract the maximum power from the PV array and inject it into the ac grid. Therefore, the maximum power point tracking (MPPT) of a uniformly irradiated PV array and the maximization of the conversion efficiency have been the main design issues. However, when the PV plant is connected to the grid, special attention must be paid to the reliability of the system, the power quality, and the implementation of protection and grid synchronization functions. Modern power plants are required to maximize their energy production, requiring suitable control strategies to solve the problems related to the partial shading phenomena and different orientation of the PV modules toward the sun. Moreover, the new policy concerning the injection of reactive power into the grid makes the development of suitable topologies and control algorithms mandatory.

The conversion of light into electrical energy using photovoltaic effect can be achieved by conversion of naturally available solar energy into electrical energy. Solar cell are the energy conversion devices which convert the solar energy to electrical energy based on photovoltaic effect. Similarly, we use more number of solar cell or photovoltaic cell and combination of such cells for increasing the power output are said to be a solar module or solar array.

A PV system consists of many interconnected solar cells and other auxiliary components designed to accomplish a desired task, which may be to feed electricity into the main distribution grid or one of many more possible uses of solar-generated electricity. The design of the system depends on the task it must perform and the location and other site conditions under which it must operate. So, for the efficient conversion of

solar energy we need understand major loss created by partial shading resulting non-uniform insolation. Performance of PV system is affected by the environmental condition such as change in solar insolation and temperature.

Solar energy is nature dependent and so photovoltaic working requires MPPT as an essential component. Under normal day condition it is easy to extract the power from the solar energy, but it is difficult to track power during shading or partial shading condition. The photovoltaic system is more favorable due to its advantages like direct energy conversion without any intermediate thermal process and solar energy is a versatile source of energy and it is available worldwide, non-polluting and it can easily be converted into other forms as per our requirements.

But in PV system solar cell are made of silicon, they are connected in series and parallel to obtain the desired voltage and power. Therefore, small change in irradiance due to shading of solar cell or panel affects the overall network performance. And if the affected panel is in series with other panels then the output will be affected of all the series connected panels.

The main advantage of such solar power plants includes that we can generate electricity where it is needed as a distributed generation. No pollution is created at the time of generation. We save more fossil fuels for our future. Such plants have lifespan of more than 20 years and reliability if more as no moving parts are used in the plant. Operating and maintenance cost is very less.

II. COMPONENTS MODELING

A. Solar Photovoltaic Array

The Solar Photovoltaic Array is formed by connecting several solar panels in series and parallel combination to generate the required power. The smallest component of the solar photovoltaic array is called photovoltaic (PV) cell. The ideal solar photovoltaic cell is represented by the equivalent circuit shown in Fig 1. These cells are connected in series of 36 or 72 cells to form one module. Similarly, several modules are assembled into a single structure to form array. Finally, assembly of these photovoltaic arrays are connected in parallel to obtain the required power. In PV module, series resistance (R_s) is comparatively more predominant and R_{sh} is considered equal to infinity (ideally). The open circuit voltage (V_{oc}) of the PV cell is directly proportional to solar irradiation and V_{oc} is inversely proportional to the temperature.

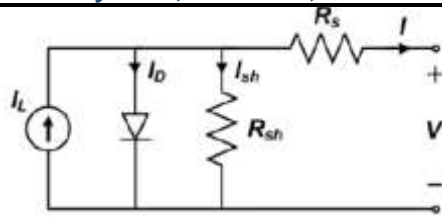


Fig. 1. Equivalent circuit of PV cell

The equations dominating the function of the circuit are presented below:

The characteristics of the PV cell can be represented by eq. (1), eq. (3) represents the saturation current of the diode. The value of I_{ph} is in proportion to the light intensity.

$$I = I_{ph} - I_s \left[e^{\left(q \frac{V+IR_s}{kT_c} \right)} - 1 \right] - \frac{V+IR_s}{R_{sh}} \quad (1)$$

$$I_{ph}(\text{photo current}) = [I_{sc} + k_i(T_c - T_{ref})] \lambda \quad (2)$$

$$I_s = I_{rs} \left(\frac{T_c}{T_{ref}} \right)^3 e^{\left[q \frac{E_g \left(\frac{1}{T_{ref}} - \frac{1}{T_c} \right)}{ka} \right]} \quad (3)$$

Where,

I_{ph} = photo current

I_s = reverse saturation current.

V = voltage across solar panel terminal.

I = current across solar panel terminal.

ka = Boltzman constant.

a = ideality factor

T_c = cell working temperature

k_i = short circuit current temperature coefficient

Quantity	Value
P_{mp}	20160 W
V_{mp}	280 V
I_{mp}	72 A
V_{oc}	344 V
I_{sc}	78.16 A
N_s	72

Table 1. PV array Specification

Generally, in practical applications of the solar module, the inputs i.e. irradiation level and operating temperature range aren't ideal. They always vary depending on the weather conditions. Fig. 2,3,4 & 5 shows the various effects of change in irradiation and temperature on I-V and P-V curves.

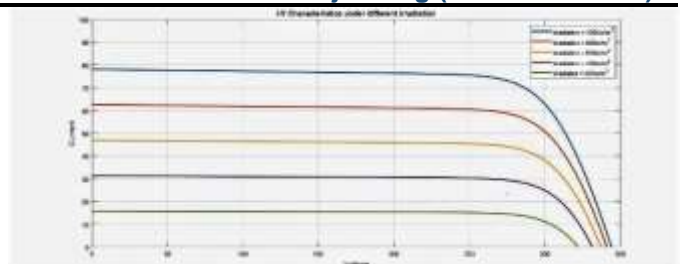


Fig. 2. I-V characteristics of 20kW PV Array at different irradiation levels

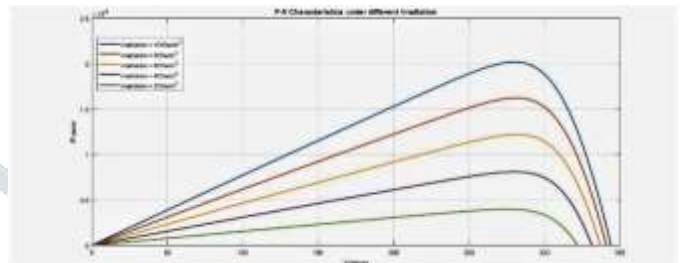


Fig. 3. P-V Characteristics of 20kW PV Array at different irradiation levels

The PV Array is characterized based on the I-V and P-V characteristic. As we can see the irradiation result direct vary the current and the curves of I-V characteristic vary largely for different level of irradiation.

The irradiation directly affects the PV Array current while the change of temperature directly affects the voltage generated by the PV Array. So same observation we can made from the above graph of I-V characteristics at different irradiation level.

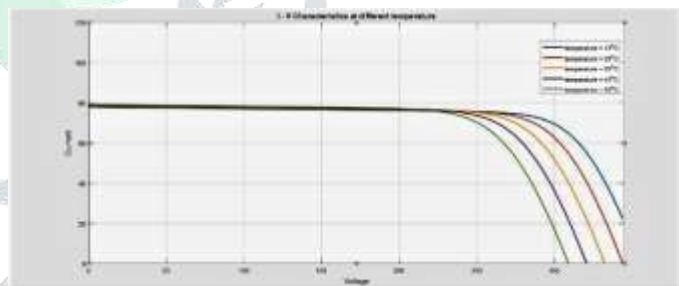


Fig. 4. I-V Characteristics of 20kW PV Array at different temperature levels

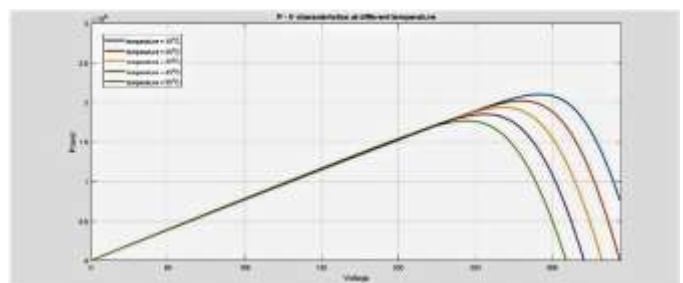


Fig. 5. P-V Characteristics of 20kW PV Array at different temperature levels

B. Maximum Power Point Tracking

Practically the solar efficiency is 30% to 40% with respect to incidence of solar insolation. To extract maximum power from solar photovoltaic system we use MPPT (maximum power point tracking). As per rule of maximum power transfer whenever load impedance matches source impedance. MPPT helps to improve the efficiency of PV Panel.

So MPPT charge controller is used along with boost converter to control the duty cycle and get the voltage correspond to maximum power. So, we can get maximum power transfer from PV to LOAD just by varying the duty cycle of the boost converter. The Incremental Conductance method is used to reach the maximum power in P-V characteristic slope of PV Array. It works on the principle that MPP is achieved when the derivative of Photovoltaic array power with respect to its Voltage is equal to zero. The Incremental Conductance algorithm works on the following condition:

$$\frac{dP}{dV} = 0, \text{ at MPP}$$

$$\frac{dP}{dV} > 0, \text{ left of MPP}$$

$$\frac{dP}{dV} < 0, \text{ right of MPP}$$

The algorithm starts by sampling the panel voltage and the current. It then calculates the incremental changes of the panel voltage and current by subtracting the values sampled at the previous MPPT cycle from the new ones. Here D indicate duty cycle and ΔD is the step change.

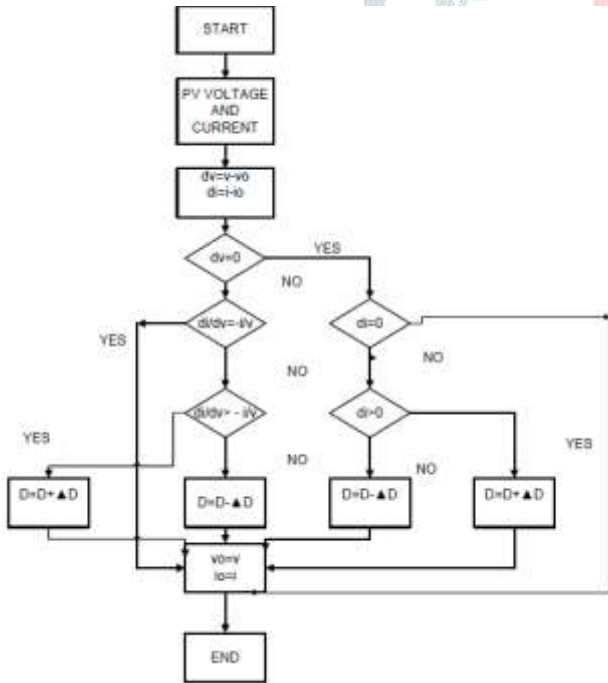


Fig. 6. Algorithm for Incremental Conductance

The main idea of incremental conductance is to be equated the incremental conductance and instantaneous conductance, so accordingly the duty cycle can be varied to get the operating voltage corresponding to maximum power.

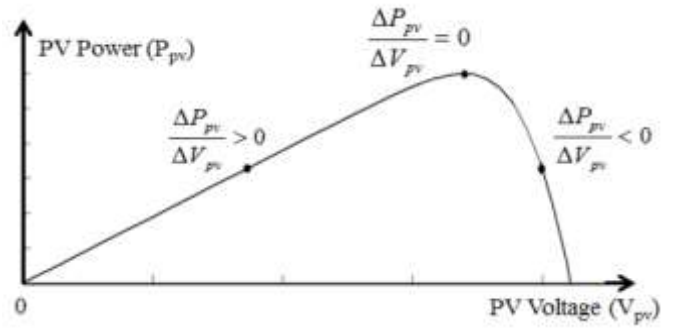


Fig. 7. Working Principle of Incremental Conductance method

$$\frac{dP}{dV} = \frac{d(IV)}{dV} = I \frac{dV}{dV} + V \frac{dI}{dV} = I + V \frac{dI}{dV}$$

$$I + V \frac{dI}{dV} \cong I + V \frac{\Delta I}{\Delta V}$$

Therefore,

$$\frac{\Delta I}{\Delta V} = -\frac{I}{V}, \text{ at MPP}$$

$$\frac{\Delta I}{\Delta V} \geq -\frac{I}{V}, \text{ left of MPP}$$

$$\frac{\Delta I}{\Delta V} \leq -\frac{I}{V}, \text{ right of MPP}$$

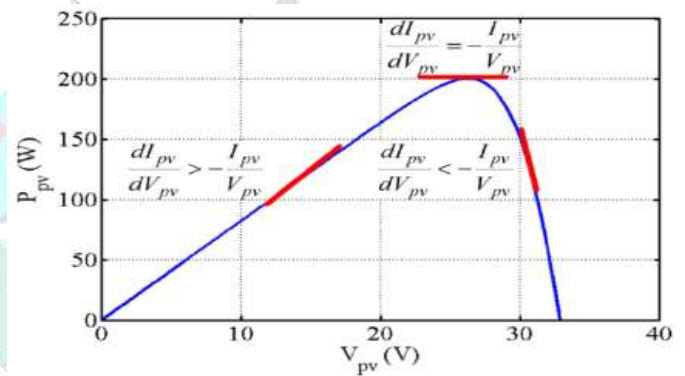


Fig. 8. Incremental Conductance Algorithm graph

C. Boost Converter

Boost converter is used to boost the DC voltage from the PV Array to a higher value to satisfy the required output voltage.

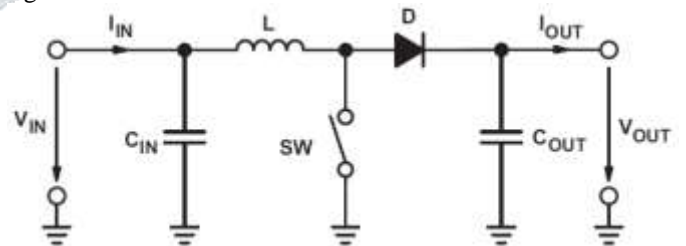


Fig. 9. Boost Converter

Boost converter is controlled by MPPT to extract maximum power by controlling the duty cycle of PWM generator. Boost converter can easily be designed by using formula as given below:

$$D = 1 - \frac{VIN(min) \times \eta}{Vout} \tag{4}$$

I_L = Inductor ripple current is to be calculated and considered to be 20% to 40% of the maximum output current $I_{out(max)}$:

$$\Delta I_L = (0.2 \text{ to } 0.4) \times I_{out} \times \frac{V_{out}}{V_{IN}} \quad (5)$$

Here, D is the Duty Cycle which is to be calculated for V_{IN} = minimum input voltage to boost converter. V_{out} = output voltage and efficiency are considered because boost need to also supply the dissipated energy. Inductor (L) value is calculated by obtaining all the values including switch frequency as per the equation where f_s is switching frequency:

$$L = \frac{V_{IN} \times (V_{out} - V_{IN})}{\Delta I_L \times f_s \times V_{out}} \quad (6)$$

The equation (7) is used to adjust the output capacitor (C_{out}) values for limited output voltage ripple:

$$C_{out(min)} = \frac{I_{out(max)} \times D}{f_s \times \Delta V_{out}} \quad (7)$$

According to eq. (4), (5), (6) & (7) the value of C_{in} , L & C_{out} are calculated. MOSFET and diode are used in their ideal conditions. C_{in} is an input filter capacitor in the PV module input circuit. The inductor L is 5.4×10^{-5} , C_{in} is 1000×10^{-6} and C_{out} is 7.07×10^{-4} . The converter switches are controlled by the PWM pulse generator which generates the pulses. The reference signal is generated by the Inc MPPT block.

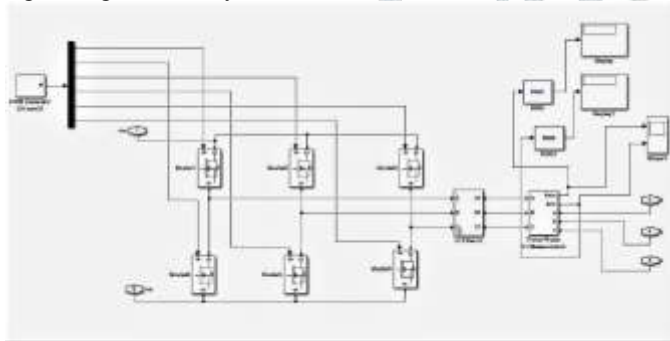


Fig. 10. Boost Converter

D. Grid Tie Inverter

It is most important part for the grid integration of solar photovoltaic system. Inverter converts the DC power to AC power as well as it also provides protection to the PV array from the feedback coming from grid. Here H-Bridge inverter with MOSFET for high frequency switching as shown in fig. 11.

Inverter consists of power switching blocks. These blocks consist of high frequency switching capacity MOSFET or IGBT along with anti-parallel diode. The inverter is categorized as single and multi-stage inverter. Here the single stage inverters are having many advantages like low cost, high efficiency along with high reliability and simple structures

Due such Switching, harmonics are developed which are reduced by using filters. Two most important functions, power conditioning and controlling the quality of output power is handled by inverter. LC filter which filters out ripples is also included in the inverter configuration. To obtain pure sinusoidal waveform Pulse width modulation technique are used. Giving output as stepped sinusoidal which is filtered to reduce the total harmonics distortion so that grid can accept the power for solar photovoltaic system.

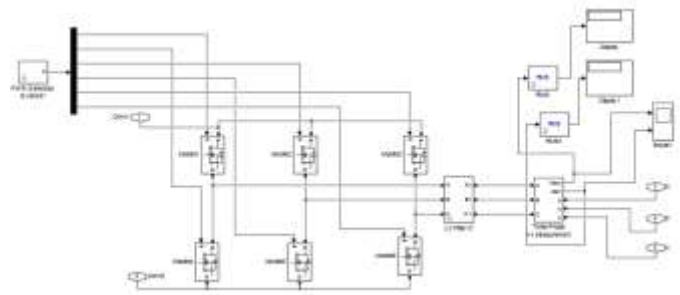


Fig. 11. Inverter

E. LC Filter

Here filters are used to suppress the harmonics content in the current output waveform which will improve the supply voltage waveform. PWM inverter uses high switching frequency of switches which generates harmonics content which can only be reduced by line filters. As shown in fig. 12 3 inductor configuration is connected in series along with the delta connected configuration of the capacitors.

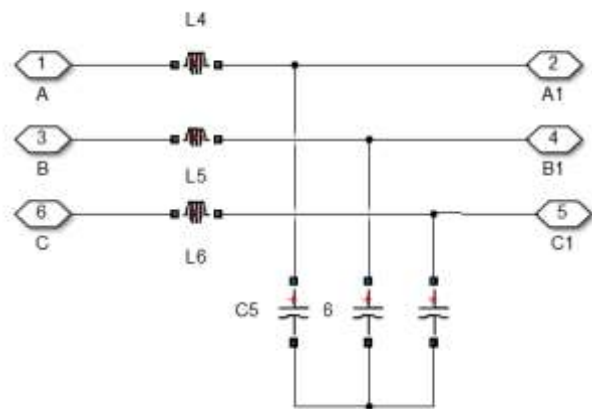


Fig. 12. LC Filter

F. Utility Grid

Here the power generated by the solar photovoltaic system is given to the distribution system. Because Solar photovoltaic system each consumer is a producer as well as a feeder of power. The power generated is used by the consumers otherwise the excess of power generated is transmitted to the grid which can be utilized to satisfy the other heavy load consumers.

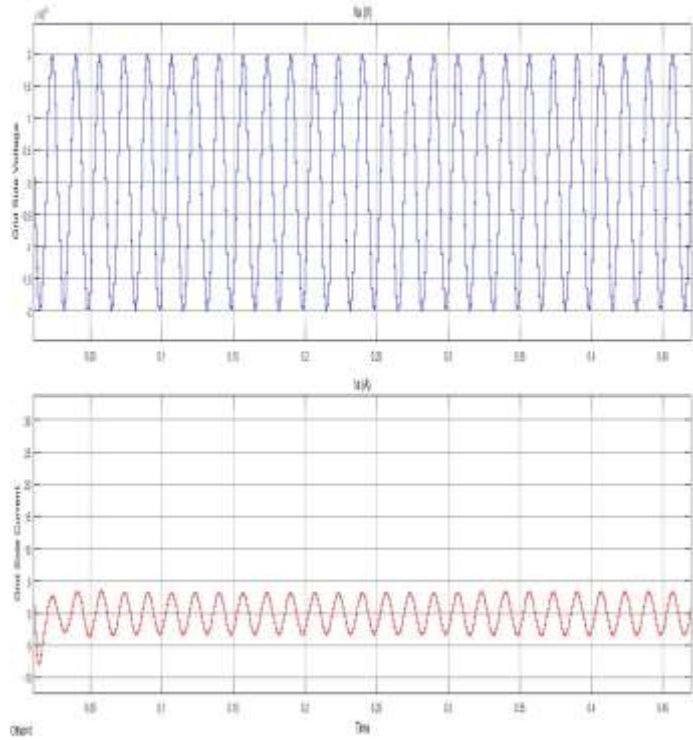


Fig 13- Grid Side Voltage and Current with Zoom Scale

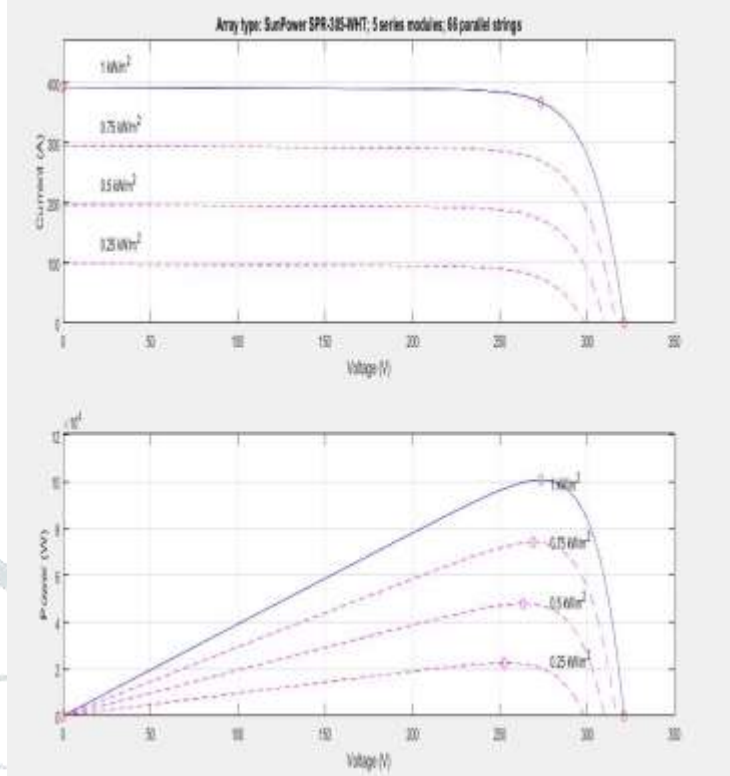


Fig 15- Solar I-V and P-V Characteristics for PV Array

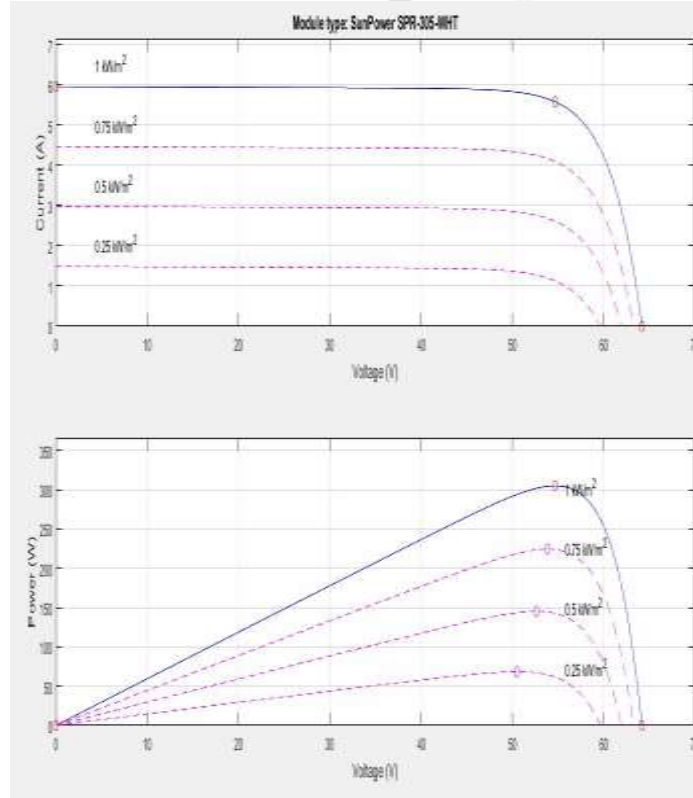


Fig 14- Solar I-V and P-V Characteristics for one Module of PV

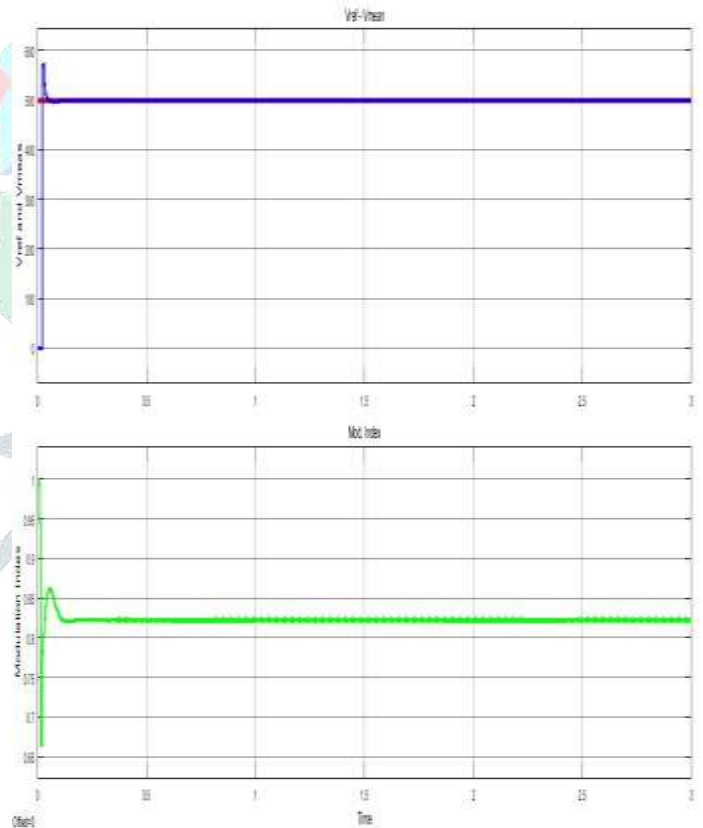


Fig 16-VSC Controlling Parameters

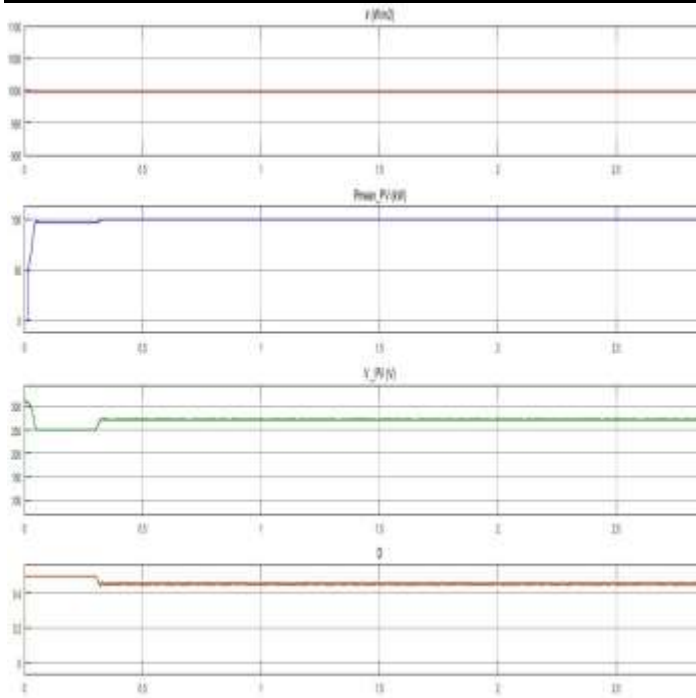


Fig 17- Solar PV output Parameters

III. CONCLUSION

The PV system performance mainly varies as per the location, surrounding condition, temperature and irradiation. That's why prediction of irradiation is very important for the generation. There is lot of scope for the researchers in Maximum Power Point Tracking technique and how-to make it more efficient by increasing the tracking speed and accuracy for maximum power output from SPV system. One of biggest challenges in solar power conversion system is of storing the power generated. Also, the choice of location and size of PV system directly affect the performance and other operational problem. Partial shading of PV array is the biggest problem for all the MPPT Technique. Here the Multilevel inverter is very helpful and reduces the distortions. Advanced PV system technologies include energy management hardware, balance of

system and advanced inverters which ensures more safety and provide advantage to both consumer as well as grid.

REFERENCES

- [1] Hireen Patel, Vivek Agarwal, "MATLAB-Based Modeling to Study the Effects of Partial Shading on PV Array Characteristics," IEEE Transactions on Energy Conversion, vol. 23, no. 1, pp. 302 – 310, March 2008.
- [2] Syafaruddin, "Problem-Solving Mismatching Losses of Photovoltaic (PV) System under Partially Shaded Conditions," 2014 Makassar International Conference on Electrical Engineering and Informatics (MICEEI), pp. 1 – 4, 26-30 November 2014.
- [3] Nicole Foureaux, Alysson Machado, Érico Silva, Igor Pires, José Brito, Braz Cardoso F., "Central Inverter Topology Issues in Large-Scale Photovoltaic Power Plants: Shading and System Losses," 2015 IEEE 42nd Photovoltaic Specialist Conference (PVSC), pp. 1 – 6, 2015.
- [4] Mahmoud Amin, Jelani Bailey, Cesar Tapia, Vineeth Thodimeladine, "Comparison of PV Array Configuration Efficiency under Partial Shading Condition," 2016 IEEE 43rd Photovoltaic Specialists Conference (PVSC), pp. 3704 – 3707, 2016.
- [5] Rajeshwari Bhol, Ritesh Dash, Arjyadhara Pradhan, S. M Ali, "Environmental effect assessment on Performance of solar pv panel" 2015 International Conference on Circuits, Power and Computing Technologies [ICCPCT-2015], Pages: 1 – 5, 2015.
- [6] Jay patel, Vishal Seth, Gaurang Sharma, "Design and Simulation of Photovoltaic system using incremental mppt algorithm" International Journal of Advanced Research in Electrical, Electronics and Instrumentation Engineering, Vol. 2, Issue 5, pp: 1-6 May 2013.
- [7] S. S. Dheeban, V. Kamaraj, "Grid integration of 10kW solar panel" 2016 3rd International Conference on Electrical Energy Systems (ICEES), Pages: 257 – 266, 2016.
- [8] Harshal Deopare, Amruta Deshpande, "Modeling and simulation of Incremental conductance Maximum Power Point tracking" 2015 International Conference on Energy Systems and Applications, Pages: 501 – 505, 2015.
- [9] Rafia Rawoof, R. Balasubramanian, N. Moorthy Muthukrishnan, "Modeling and simulation of 100 kWp grid-connected Photovoltaic Power System", 2015 Conference on Power, Control, Communication and Computational Technologies for Sustainable Growth (PCCCTSG)", Pages: 15 – 20, 2015.
- [10] S. Sheik Mohammed, D. Devaraj, "Simulation of Incremental Conductance MPPT based Two phase interleaved Boost Converter using MATLAB/Simulink", 2015 Conference Paper, 2015.