

Novel concept of modern home using AI and Face Feature Analysis

¹ Reena Verma , ² Ravindra Kumar Sharma

¹Research Scholar, ² Professor

^{1,2} Department of Electronics and Communications Engineering
Institute of Engineering and Technology , Alwar Rajasthan

Abstract : The world is modernizing and the things are getting more breathtaking day by state. These breathtaking things and contraptions cause our reliably plan more to release up similarly as develops the security decently. The proposed work is made game-plans for the Smart home course of action which will change over the divider colors utilizing the light of the blub and play sound around subject to the way of the client and close by that will be face attestation-based shooting framework. Such frameworks are the future need and they will remain as portions to depict the movement towards the sharp society. The methodology utilize the AI idea for the face exposure and the viewpoint evaluation and works the strategy after the best judgment. The thinking is in like way stirred from the chance of Ambid Intelligence. The outcomes are then assessed by gave tests on the quantity of tests in every class of grin , shock and that's only the tip of the iceberg and based on the examples which are tried right and the examples which are tried wrong , the exactness is determined for the every one of the give classification. The outcomes which are acquired get-togethers investigation are superior to the prior approaches. This kind of approach is very valuable for apply of frameworks like face based section , face based driving , face based transportation for changing the work or travel climate. Such kind of advance applications will set out the establishment of things to come time of man-made brainpower and such kind of uses are likewise valuable in such pandemic circumstances like COVID-19...

Index Terms - Artificial Intelligence , Ambid Intelligence , Ambient Intelligence , Facial Recognition , Emotion Recognition

I. INTRODUCTION

Ambient intelligence throws open immense possible results for simplifying our lives and better. Whether or not we are in our parlor or kitchen or at our work space. Whether or not we are at the store, driving, or in the clinical facility, development will go comparably our right hand far away. [1]

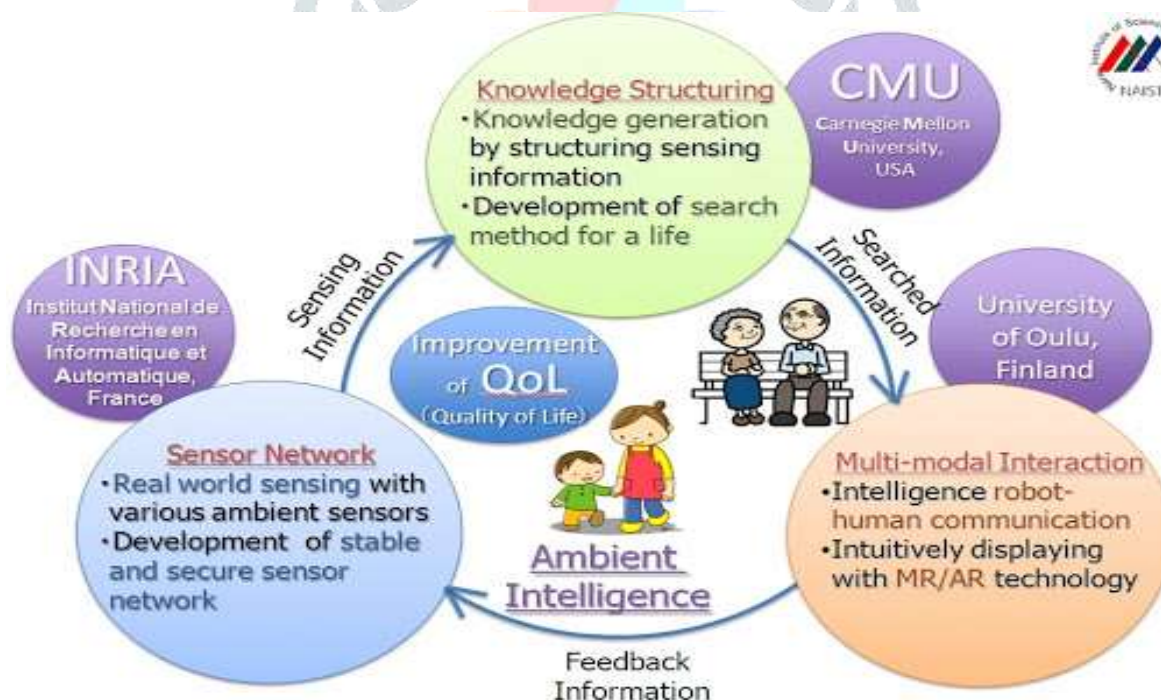


Fig 1 AMI Possibilities [1]

From notice us not to pick that sweet since it can scrutinize our glucose levels from our prosperity noticing wearables to mentioning that we take a substitute course to work since it knows there was an incident on the standard course. It will change announcing progressively conditioner to cool our homes before we get back from work on boiling summer evenings. [2]

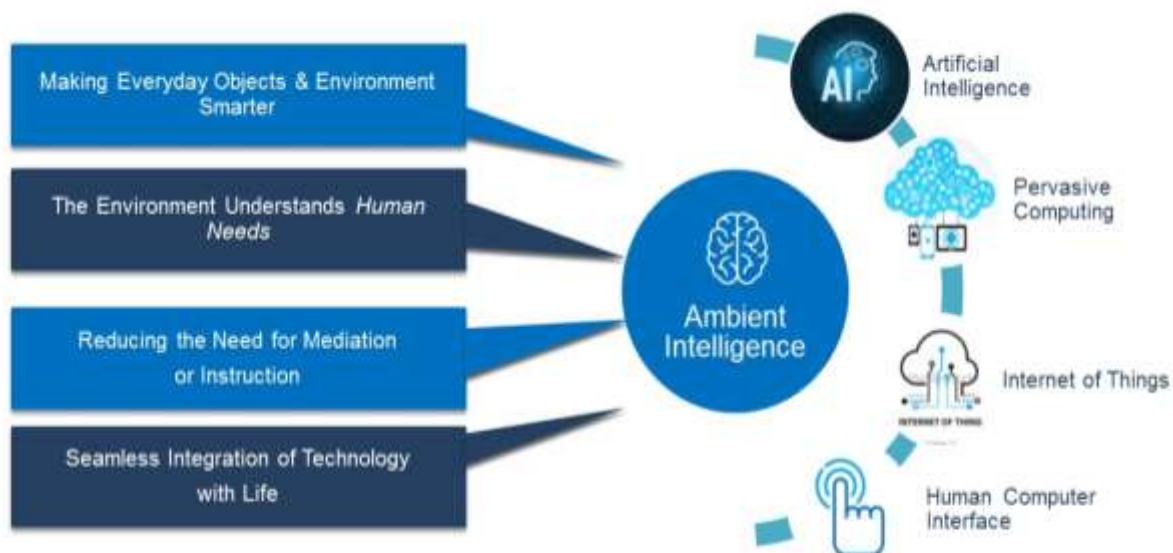


Fig 2 AmI Perspective [2]

While the assurance of AmI is invigorating, see that security will be a gigantic concern. AmI structures will know almost all that is about the existences of the people they track and at whatever point obstructed by unapproved parties, could provoke a wide scope of harm. Requests on data use, insurance and all things considered security ought to be tended to even more comprehensively and the systems arranged with trust as a fundamental layer. AmI has monster potential which is for the improving of the idea of living, comfort, and prosperity of people. AmI kinds of homes with the human driven developments will simplify step by step tasks. This will accept a basic occupation in giving quality thought to the old particularly as the general population ages. Undoubtedly, even the external our homes, the AmI will find applications in a couple of spaces including retail, restorative administrations, delivering, savvy metropolitan networks and anything is possible from that point. [3].

II. LITERATURE SURVEY

M. Jazouli, A. Majda and A. Zarghili[4] Autism is a developmental issue remembering abstract handicaps for the social cooperation. One wellspring of those impedances are issues with facial verbalizations of the feeling. Intellectually lopsided people as often as possible experience issues to see or to understand others' feelings and opinions, or conveying their own.

M. Karthigayan, R. Nagarajan, M. Rizon and S. Yaacob [5] In this paper, lip and eye features are associated with bunch the human based feelings through the part of the flighty and furthermore the normal circle fitting conditions using Genetic computation (GA). The South East Asian face is additionally thought to be in this kind of assessment. Every one of the six all around recognized feelings and one fair-minded are considered for portrayals.

A. Leal, R. Lopes, P. Arriaga and F. Esteves [6] The ability to deal with various spaces of the human faces it is the very much made based capacity in the people groups, contributing basically to social correspondence. The extractions of the passionate based substances out of the facial features is one the such space, which incorporates doubtlessly comprehended psyche structures, whose unmistakable responsibility is regardless incapably depicted. Objections: Our highlight is on recognition and valuable depiction of the brain locales related with enthusiastic getting ready of faces, with explicit focus on the responsibility of front facing projections to treatment of central facial feeling looks, for instance, fear and fulfillment.

S. S. Panchal, A. Hiremath and N. R. Toravi [7] The central inspiration that is behind this conversation is to give a portion of the introductions that are about the necessities and furthermore the jobs of the facial disposition based recognition. The Non-verbal sorts of the correspondences are the facial dispositions. It then, at that point conveys the human based edge of the psyche and besides it see their perspectives. The amounts of the exploration additionally have been finished throughout the new a very long time for the redesigning of the human PC collaboration. This paper additionally contains the a portion of the information about the facial appearance recognition, the application, the connected examination of the face attitude recognition approaches and steps.

A. V. Iyer, V. Pasad, S. R. Sankhe and K. Prajapati [8] Music is probably the best medium as it can instill significant feelings and marsh crowd individuals with subtle prompts. It deftly plays with our feelings which consequently impact our perspective. Books, films and TV shows several different media simultaneously, rather than these, music passes on its message in immaterial minutes. It can help us when creators are feeling low and empower us. At the point when creators check out hopeless tunes, creators will overall feel a reduction in perspective. At the point when creators check out playful tunes, creators feel more blissful. Manual gathering of tunes reliant upon outlook, for production of a playlist, is monotonous and work concentrated. Our paper proposes a structure 'EmoPlayer', an Android application, which help to restrict these undertakings by suggesting the customer an overview of songs reliant upon his current feeling. The system discovers customer's image using camera and perceives his face. It by then recognizes the feeling and makes a once-over of tunes which will work on his attitude as the tunes keep playing. EmoPlayer uses Viola Jones computation for face recognition and Fisherfaces classifier for feeling plan.

N. Gül and H. Tora [9] Emotion recognition structures have a critical undertaking to do in the human-PC natural applications (HCI). These structures are using facial features of face pictures and they are affirming or recognizing the feelings. In this examination, feeling unmistakable verification computations are improved by using basically mouth region features of a face. Region of interest (mouth region) is recognized by Viola-Jones estimations from video diagrams which are including unmistakable enthusiastic face appearances. Outer constraints of lip shapes are taken out by truly and decided the scalar Fourier Descriptors (FDs) of the cutoff points. Portrayal and recognition of the feelings is presented by scalar FDs of lip structures. Test results are obtained as 93.9 % precision rate for scalar FDs.

F. Goodarzi, F. Z. Rokhani, M. I. Saripan and M. H. Marhaban [10] The issue of seeing and isolating mixed feelings in the multi see based faces using the electronic camera is discussed in this paper. Considering the composition, there are principally seven fundamental feelings that individuals can communicate and get it..

III. PROPOSED WORK

Stage 1: First for all we will start the cycle of assessment.

Stage 2: To begin will we will get to the house utilizing the entryway camera.

Stage 3: Camera will snap the photo and inspect the framework for face acknowledgment.

Stage 4: Examine the face utilizing the Eigen faces calculation.

Stage 5: Perform the Image Segmentation and furthermore play out the associated locale investigation to discover the territory of enthusiasm from the caught picture.

Stage 6: Perform the twofold example examination of the picture.

Stage 7: Perform the Facial Components Analysis like Eye, Ear and Lips investigation utilizing the Curve Pattern and preparing models got for the dataset of pictures and Detect the Emotion.

Stage 8: If (Detected_Emotion == "Smile") Then Go Light to Red

 Play Video Song with Smile Emotion

Else If (Detected_Emotion == "Normal") Then Go Light to Blue

 Play Song with Normal Emotion

Else If (Detected_Emotion == "Surprise") Then Go Light to Yellow

 Play Video Song with Surprise Emotion"

Else If (Detected_Emotion == "Sad") Then Go Light to Light Green

 Play Video Song with Sad Emotion"

Else If (Detected_Emotion == "Ambiguous") Then Go Light to White

 Play Video Song with Ambiguous Emotion"

[End of If structure]

Stage 9: Stop.

IV. IMPLEMENTATION AND RESULT

Implementation is done using the Visual Studio 2010 and SQL Server .

The proposed work is executed in Microsoft Visual Studio 2010 and Microsoft SQL Server 2008 Express Edition. To run the above programming the important stuff are center i3 processor 2.30 GHz of 4 GB of RAM notwithstanding the way that unexpected spike popular for lower planning capacities machines. In a little while the part passes on after with clarification of execution of calculation with the help of screen catches of my work I have taken in the midst of my proposed work.











Fig 3 Emotion Testing



Fig 4 Emotion Detection and Operation

Table 1 Result Analysis

Face Tested	Actual	Proposed Work Result
	Smile	Normal
	Smile	Smile
	Smile	Smile
	Smile	Smile
	Smile	Smile
	Smile	Smile
	Smile	Smile
	Smile	Smile

	Smile	Smile
	Smile	Normal
	Smile	Smile
	Smile	Smile

In total the smile around 55 samples of smile is taken out of which 2 results are wrong

For the testing purpose the image from the dataset are taken as random and the checked with the proposed implementation and the result are ,

Table 2 Percentage Comparison on Smile

	Base	Proposed
Smile	95.7	96.36

Table 4 Approach Difference

Base Paper (Wenqi Wu et.al 2018)	Proposed Approach
The System is constrained to Facial Expression recognition not the face location.	In this we have utilized the idea of the face recognition utilizing the Eigen faces calculation, which is straightforward for handling and capacity applications.
RoIAlign and highlight map link for facial examination estimation require time for that.	Facial Components Analysis like Eye , Ear and Lips examination utilizing the Curve Patterns and preparing models got for the dataset of pictures and Detect the Emotion

Fig 4 Analysis of Strength

V. CONCLUSION

AmI) take a gander at creates moves in sensors and sensor systems, certain dealing with, and man-made mental inclination. Since these contributing fields have encountered colossal improvement over the most two or three years, AmI research has reinforced and expanded. Since AmI research is making, the resulting types of progress affirmation to revolutionarize bit by bit human existence by making individuals' ecological elements adaptable and flexible. People have constantly had the innate ability to see and see faces. At last PCs can do in like manner. This opens up immense extents of businesses. Face disclosure and Recognition can be utilized to further develop access and security like the furthest down the line Apple Iphone does. The world is modernizing and the things are getting more breathtaking day by state. These breathtaking things and contraptions cause our reliably plan more to relax up similarly as develops the security decently. The proposed work is made strategies for the Smart home course of action which will change over the divider colors utilizing the light of the blub and play sound around subject to the way of the client and close by that will be face insistence based shooting framework.

Such frameworks are the future need and they will remain as fragments to depict the movement towards the insightful society. The approach utilize the AI concept for the face divulgence and the viewpoint evaluation and works the method after the best judgment. The contemplation is in like way animated from the chance of Ambid Intelligence...

REFERENCES

1. S. Liu and W. Wang, "The Application Study of Learner's Face Detection and Location in the Teaching Network System Based on Emotion Recognition," *2010 Second International Conference on Networks Security, Wireless Communications and Trusted Computing*, Wuhan, Hubei, 2010, pp. 394-397.
2. P. Chiranjeevi, V. Gopalakrishnan and P. Moogi, "Neutral Face Classification Using Personalized Appearance Models for Fast and Robust Emotion Detection," in *IEEE Transactions on Image Processing*, vol. 24, no. 9, pp. 2701-2711, Sept. 2015.
3. P. Saini, T. Choudhury, P. Kumar and S. Rawat, "Proposal and implementation of a novel scheme for image and emotion recognition using Hadoop," *2017 International Conference On Smart Technologies For Smart Nation (SmartTechCon)*, Bangalore, 2017, pp. 1358-1363.
4. M. Jazouli, A. Majda and A. Zarghili, "A \$P recognizer for automatic facial emotion recognition using Kinect sensor," *2017 Intelligent Systems and Computer Vision (ISCV)*, Fez, 2017, pp. 1-5.
5. M. Karthigayan, R. Nagarajan, M. Rizon and S. Yaacob, "Personalized Face Emotion Classification Using Optimized Data of Three Features," *Third International Conference on Intelligent Information Hiding and Multimedia Signal Processing (IIH-MSP 2007)*, Kaohsiung, 2007, pp. 57-60.
6. A. Leal, R. Lopes, P. Arriaga and F. Esteves, "The brain mapping of emotion in human faces: Clinical application in epilepsy," *2014 IEEE International Symposium on Medical Measurements and Applications (MeMeA)*, Lisboa, 2014, pp. 1-4.
7. S. S. Panchal, A. Hiremath and N. R. Toravi, "Automatic Face Emotion Recognition," *2018 International Conference on Smart Systems and Inventive Technology (ICSSIT)*, Tirunelveli, India, 2018, pp. 402-405.
8. A. V. Iyer, V. Pasad, S. R. Sankhe and K. Prajapati, "Emotion based mood enhancing music recommendation," *2017 2nd IEEE International Conference on Recent Trends in Electronics, Information & Communication Technology (RTEICT)*, Bangalore, 2017, pp. 1573-1577.
9. A. V. Iyer, V. Pasad, S. R. Sankhe and K. Prajapati, "Emotion based mood enhancing music recommendation," *2017 2nd IEEE International Conference on Recent Trends in Electronics, Information & Communication Technology (RTEICT)*, Bangalore, 2017, pp. 1573-1577.
10. F. Goodarzi, F. Z. Rokhani, M. I. Saripan and M. H. Marhaban, "Mixed emotions in multi view face emotion recognition," *2017 IEEE International Conference on Signal and Image Processing Applications (ICSIPA)*, Kuching, 2017, pp. 396-401.
11. K. M. Rajesh and M. Naveenkumar, "A robust method for face recognition and face emotion detection system using support vector machines," *2016 International Conference on Electrical, Electronics, Communication, Computer and Optimization Techniques (ICEECCOT)*, Mysuru, 2016, pp. 1-5.
12. T. M. W. Vithanawasam and B. G. D. A. Madhusanka, "Dynamic Face and Upper-Body Emotion Recognition for Service Robots," *2018 IEEE/ACIS 17th International Conference on Computer and Information Science (ICIS)*, Singapore, 2018, pp. 428-432.