



## A Study on the Deployment Model of Underwater Sensor in a Swimming Pool Environment Using Localization Scheme

<sup>1</sup>Dr.S.Thiruniraisenthil., <sup>2</sup>S.Kannan

<sup>1</sup>Assoc.Prof, Department of Computer Science, Bharath Institute of Higher Education and Research, Selaiyur, Chennai., India.

<sup>2</sup>Asst.Prof, Department of Computer Science, Bharath Institute of Higher Education and Research, Selaiyur, Chennai., India.

[thiruniraisenthil.arts@bharathuniv.ac.in](mailto:thiruniraisenthil.arts@bharathuniv.ac.in), [kannan.mca@bharathuniv.ac.in](mailto:kannan.mca@bharathuniv.ac.in)

**Abstract**— Swimming Pool is one of the places where most of the children wish to be. But mostly the swimming pools do not have proper security measures to be done, in case of any emergency. In the world, in totality the reason for death of children is due to drowning while swimming in the pools. To overcome such mortality due to drowning we have devised a new system to prevent such occurrences using mobile underwater sensors. The sensors are designed for children who weigh below 10 kilograms. In a specified swimming pool, a number of mobile underwater sensors are deployed. For every child a mobile sensor node is allocated and it is designed to move along with the child. The mobile sensor which is moving along with the child monitors the movement of the child. Researchers have identified the time a normal child can hold its breath is 35 seconds. If a child lies below the water surface for more than 35 seconds, the sensors identifies the child as drowning. So in the starting of the 30<sup>th</sup> second the sensor passes the message as child is drowning and an alarm is activated. The alarm will ring with 100 decibel sound. Here in this real time deployment, PSO algorithm is used to localize the mobile sensor nodes in the swimming pool environment. Thus the proposed work would help saving a child from drowning in a swimming pool.

**Index Terms** — Underwater Sensor Networks, USN Applications, Localization, PSO Algorithm, Acoustic Signals. Swimming Pool Safety

### 1 INTRODUCTION

All the people irrespective of the age wish to be in and around the water and children are no exceptions to that. Naturally children like to spend time in swimming pools whether or not they know to swim. But sometimes the pools where the children wished to be would turn to a place where they shouldn't have been. According to National Drowning Report 2013 taken by Royal Life Saving Society- Australia, 56% of the total deaths of children in Australia for the year 2012-2013 aged between 0-14 years is on account of drowning in the swimming pool. Proper Security measures should be taken for the children in the swimming pool. Our proposed work aims to provide

a security measure for the drowning children using Mobile Underwater Sensor Networks.

#### 1.1 Underwater Sensor Networks:

Underwater Sensor Networks are devised for stand-alone applications and to control Autonomous Underwater Vehicles (AUVs) and as an addition to cabled system. [1] A basic underwater acoustic network is formed by establishing a two way acoustic links between various instruments such as Sensors and Underwater vehicles deployed in the ocean. This

network is then connected to a Base Station. This type of configuration creates an interactive environment where the scientists can access the real time data gathered from the sensors and vehicles. Loss of data can be avoided to the maximum level since the gathered data are transferred to the base station when it is available.

Underwater Sensors are mainly deployed in the Oceanic environment for the applications of Pollution monitoring, Disaster prevention, environmental monitoring, tactical surveillance, assisted navigations and so on. Exploring natural under sea resources and gathering scientific data in the monitoring missions can be done with the help of Multiple Unmanned or Autonomous Underwater vehicles (UUVs, AUVs) deployed with single or multiple sensors. To achieve this, communication has to be established among the sensors below water.[2]

The underwater sensor nodes and the vehicles have to possess the capability of self configuring itself and it has to communicate among themselves and to the base station. Underwater acoustic networking is the enabling technology for these applications.

### 1.2 Various Applications of Underwater Sensor Networks:

Here are the various Applications of Underwater Sensor Networks.

- **Environmental Monitoring:** Underwater Acoustic sensors are used in the field of environmental monitoring. UW-ASN can be used to monitor ocean currents and winds, to improve weather forecast, to detect climatic changes, to understand and predict the effect of human activities on marine ecosystems, and also in biological monitoring such as tracking of different kinds of fishes and microorganisms. These sensors are also used in the field of Pollution monitoring such as Chemical, Biological and Nuclear. A simple underwater sensor network is deployed to detect extreme temperature gradients, which are breeding ground for certain marine microorganisms.[3]
- **Surveillance:** Fixed underwater sensors and autonomous underwater vehicles can be deployed to collaboratively monitor areas for surveillance, reconnaissance, targeting and intrusion detection systems.[4]
- **Ocean Sampling Networks:** Networks of Sensors and AUVs can perform synoptic, cooperative and adaptive

sampling of the 3D coastal ocean environment. Experiments such as Monterey Bay Field experiment demonstrated the advantages of new robotic vehicles with advanced ocean models to improve in predicting the characteristics of oceanic environment.[5]

- **Assisted Navigation:** Sensors deployed in the oceanic environment helps in identifying hazards on the seabed, locate rocks or shoals in shallow water and submerged wrecks in the ocean.
- **Undersea Explorations:** USN deployed in the ocean can be used in detecting oilfields or reservoirs, determine routes to lay undersea cables and to assist in exploration for valuable minerals.
- **Mine Reconnaissance:** Multiple AUVs with acoustic and optical sensors deployed in the deep ocean can be used to perform rapid environmental assessment and helps in detecting mine like objects.
- **Disaster Prevention:** Underwater sensor nodes deployed in the ocean which can measure seismic activity can provide tsunami warnings to coastal areas and it can study the effects of submarine earthquakes.[6]

### 1.3 Need for Underwater Sensor in a Swimming Pool:

As per the survey conducted by the above said research organisation in Australia, major death of the children are caused by drowning in the swimming pool. Some set of security measures has to be taken to prevent the happening of such tragic incidents in future. [7] The major challenge faced by the children in the swimming pool is that unlike adults they can't hold their breath for longer time. Underwater Sensors can be used in such cases to prevent the children from drowning in pools. Mobile Sensors placed underwater tracks the motion of the children and raises an alarm in case of any emergency.

## 2. A STUDY ON THE CHARACTERISTICS AND APPLICATIONS OF UNDERWATER SENSOR NETWORKS- PHASE I

In Phase I, Characteristics of acoustic communication is discussed. Also how the underwater sensor network differentiates from terrestrial network. Also some of the ongoing underwater projects are taken and their performance is analysed against various criteria.

## 2.1 Characteristics of Acoustic Communication:

The factors that influence underwater acoustic communications are:

- **Path Loss:**
  - **Attenuation:** It is mainly caused by absorption due to conversion of acoustic energy into heat. Depth and frequency increases attenuation. Depth of water is the key factor to determine attenuation.[8]
  - **Geometric Spreading:** It refers to the spreading of sound energy when wave front expands. It is frequency independent and increases with distance of propagation. There are two types in it: *Spherical* for shallow water communications and *Cylindrical* for deep water communications.
- **Noise:**
  - **Man made noise:** Noise caused by machinery, shipping activity in areas with heavy vessel traffic.
  - **Ambient Noise:** Noise caused by movement of water, including tides, currents, storms, wind and rain.
- **Multipath:**
  - Multi path propagation may be responsible for the degradation of acoustic communication signal, due to the generation of inter-symbol interference,
  - Link configuration is major part in multi-path geometry. Vertical channels have little dispersion whereas horizontal channels have high multi-path spreads.
- **High delay and delay variance:**
  - Large propagation delay might reduce the throughput of the system as the propagation speed is five orders lower in magnitude than the terrestrial networks. It also prevents efficient protocol design.

## 2.2 How Underwater Sensors Networks differs from Terrestrial Sensor Networks:

The major differences in terrestrial and underwater sensor networks are:

- **Cost:** Compared to the terrestrial sensor nodes, underwater sensor nodes are more expensive devices. This is due to the requirement of the complex transceivers and protection of devices which is necessary to sustain in the extreme environment.
- **Deployment:** Terrestrial sensor networks can be densely deployed but in underwater, the deployment of the sensor nodes is sparser due to the cost and the challenges associated with it.[9]
- **Power:** The acoustic underwater communications need more power than the power consumed by the terrestrial communications due to higher distances and more complex signal processing.

- **Memory:** The sensor nodes in the terrestrial environment have limited storage capacity, so underwater sensors may need to be able to do some data caching as the underwater channel may be intermittent.
- **Spatial Correlation:** Due to higher distance among sensors correlation is more unlikely to happen in underwater environment, whereas in terrestrial sensor nodes the readings are often correlated.

## 2.3 Traditional Approaches in Deploying Underwater Sensors:

Traditional Approach for deploying Underwater Sensor Networks for oceanic environment is to deploy underwater sensors and recover the instruments, which in the mean time record data.[10] Some disadvantages exist in this approach. They are:

- **No real time monitoring:** The data that is recorded cannot be retrieved until the instrument is recovered. This might take several months from the beginning of the deployment. This cannot be applied in surveillance or in environmental monitoring.
- **No on-line system reconfiguration:** There is no interaction between the sensors and the base station during the deployment period. So it is not possible to reconfigure the system if there is any need.
- **No failure detection:** If failures occur in the system, it is not possible to detect until the instrument is recovered. This may lead to the failure of the mission.
- **Limited Storage Capacity:** The major drawback is the amount of data that is recorded by every sensor during deployment is limited to the capacity of the onboard storage devices.

## 2.4 Performance Evaluations of Various UASN Projects:

As part of the study, various Underwater Sensor Networks projects across the world are taken and their performance is evaluated against different criteria. The criteria taken for this evaluation are Reliability, Efficiency, Longevity, Affordability and Social benefit. These projects are compared against three values high, medium and low. In terms of efficiency three projects have shown full efficiency and two projects have shown medium and rest of them shows low. Similarly other parameters are compared against different projects.

### 3. LOCALIZATION METHODS- PHASE II

Based on the survey conducted on various underwater projects across the world, there exists some error in the localization of super nodes in underwater environment. Localization is the process of estimating the location of the sensors and the goal of localization is to determine the physical coordinates of group of sensors.[11],[12] Super Node localization is the process of determining the location of super nodes in the specified area. The accuracy of localization is very important in any sensor network. Many localization algorithms have been proposed for sensor nodes but there exists only few for super node localization. Super nodes are powerful nodes, which works as reference clocks. They always maintain synchronization with surface buoys and it can perform moving speed estimation.[13] Protocols for localization are classified into two. They are Range based and Range free protocols. Range based scheme uses hardware to find distance between anchor nodes and sensor nodes, which is expensive. In Range free scheme, anchor node identifies its position and informs other nodes by passing message.[14], [15]

#### 3.1 Underwater Sensor Networks Model:

In this paper, the network architecture for underwater sensors are considered in a hierarchical manner.

- **Surface buoys:** Surface buoys floats on the surface of the water and it is equipped with GPS in order to transfer the data.
- **Super Node:** Super nodes are powerful nodes, which works as reference clocks. They always maintain synchronization with surface buoys and it can perform moving speed estimation.[13]
- **Ordinary Nodes:** Ordinary nodes are sensor nodes which are trying to be synchronized. It cannot communicate with surface buoys directly. Instead it can communicate with themselves or with super nodes.

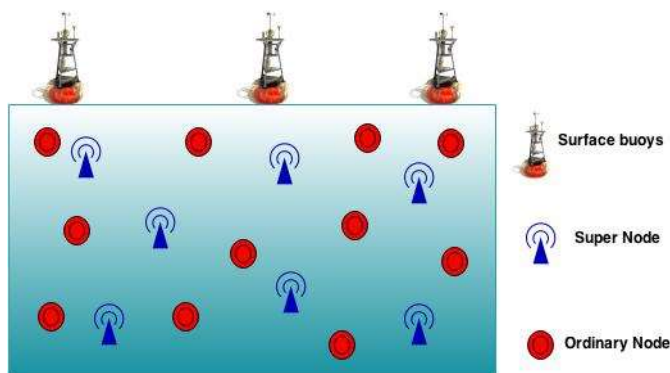


Fig 1: Underwater Sensor Networks Model

#### 3.2 Overview of PSO Algorithm:

Particle swarm optimization (PSO) is a population based stochastic optimization technique developed by Dr. Eberhart and Dr. Kennedy in 1995, inspired by the social behavior of birds. The algorithm is very simple but powerful.[16]

The algorithm is initialized with particles at random positions, and then it explores the search space to find better solutions. In every iteration, each particle adjusts its velocity to follow two best solutions. The first is the cognitive part, where the particle follows its own best solution found so far. This is the solution that produces the lowest cost (has the highest fitness). This value is called pBest (particle best). The other best value is the current best solution of the swarm, i.e., the best solution by any particle in the swarm. This value is called gBest (global best).[17] Then, each particle adjusts its velocity and position with the following equations:

The particle's velocity is adjusted by the equation:

$$v_{i,d}(it+1) = v_{i,d}(it) + c_1 * Rnd(0,1) * [pb_{i,d}(it) - x_{i,d}(it)] + c_2 * Rnd(0,1) * [gb_d(it) - x_{i,d}(it)] \tag{1}$$

The particle's position is adjusted by the equation:

$$x_{i,d}(it+1) = x_{i,d}(it) + v_{i,d}(it+1) \tag{2}$$

Table 1: Parameters and captions

Parameter	Caption
$i$	particle's index, used as a particle identifier
$d$	Dimension being considered, each particle has a position and a velocity for each dimension
$it$	Iteration number, the algorithm is iterative
$x_{i,d}$	Position of particle I in dimension d
$v_{i,d}$	Velocity of particle I in dimension d
$C_1$	Acceleration constant for the cognitive component
$Rnd$	Stochastic component of the algorithm, a random value between 0 and 1

$pb_{i,d}$	The location in dimension $d$ with the best fitness of all the visited locations in the dimensions of particle $i$
$C_2$	Acceleration constant for the social component

### 3.3 Localization Procedure:

The algorithm is initialized with nodes at random positions, and then it explores the search space to find better solutions. In every iteration process, each node adjusts its position and velocity using the above specified equations (1) and (2), to follow two best solutions. The first one is the best solution (fitness) it has achieved so far. (The fitness value is also stored.) This value is called  $pb_{best}$ . Another "best" value that is tracked by the particle swarm optimizer is the best value, obtained so far by any node in the population. This best value is global best and called as  $gb_{best}$ . Among the selected nodes within the range of the super node, the node with the  $gb_{best}$  value is set as super node. Similarly same procedure is applied to other nodes in the search space, and super nodes for the next group of nodes are localized. The present localized super node communicates with the previous super node and so on. Likewise all the super nodes will be localized and communication will be done among the localized super nodes. This localization process is for mobile underwater sensor nodes. As the nodes will be keep on moving, the whole procedure is repeated until certain level of iteration. This helps for the efficient packet delivery, minimized localization error, minimized packet drop ratio, etc., which is the major drawback of the existing work.

### Proposed Algorithm for super node localization

- Step 1: Initialize
- Step 2: Repeat
- Step 3: While (all super nodes are not identified and localized)
- Step 4: Select nodes (S) based on range R
- Step 5: For each particle  $i$  in S do
- Step 6: Calculate  $pb_{i,d}$
- Step 7: End for
- Step 8: Set  $gb_d = \text{MAX}(pb_{i,d})$
- Step 9: Set node with  $\text{MAX}(pb_{i,d})$  as Super Node and Localize it in  $gb_d$  position.
- Step 10: For each particle  $p$  in S
- Step 11:  $v_{i,d}(it+1) = v_{i,d}(it) +$

## 4. DEPLOYMENT MODEL- PHASE III

Based on the above study on various underwater projects, we have proposed a localization algorithm using PSO for the underwater sensors which helps time synchronization. Now a deployment model is proposed for the indoor swimming pool to prevent children drowning.

### 4.1 A Deployment Model for Indoor Swimming Pool:

The deployment model of our proposed work for an indoor swimming pool is shown in the below figure. Here number of mobile sensors will be suspended at certain depth from the water surface in the swimming pool. The parameters of the sensors would be weight, movement and range. Because the sensors sense all these parameters of a person. If a person enters the pool, the system will check whether the entered person is child or an adult using the sensors.

And if it is a child a mobile sensor will be allotted for the child and it will monitor the movement of the child at a certain depth from the water surface. According to a study, a normal child cannot hold his/her breath more than 35 seconds of time. As the sensors track the motion of the child, in case of any emergency it can sense it. If a child lies down the water surface for more than 30 seconds, the sensors activates the alarm. The alarm can ring at 100 decibel sound alerting the nearby persons to save the child. The deployment of mobile sensors can be done based on our previous study. The localization of the nodes are done based on the PSO algorithm according to Phase II. So in such a way this model could be deployed in an indoor swimming pool environment and thus it could help to prevent children from drowning.

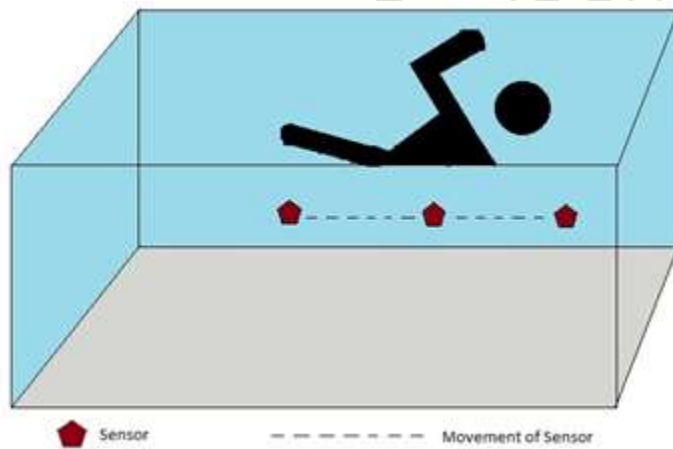


Fig 2: Deployment Model for Indoor Swimming Pool

#### 4.2 System Flow:

In this section, system flow diagram of our proposed work is shown. The system starts with a person A enters into the swimming pool. He can be any person, child or an adult. First the sensors have to identify whether the entered person is a child or an adult. This can be done by sensing the weight of the entered person. Usually children will weigh around 10 kilograms. So our system identifies the person by sensing their weight. If a entered person weighs above 10 kgs, the system identifies the person as adult and leaves. If

the entered person weighs below 10 kgs, it makes sure the entered person is a child and a mobile sensor is allotted.

The mobile sensor will be moving along with the child to ensure child's safety. It will be moving at a certain depth below the swimming child sensing the movement of the child. According to a study, a normal child can hold its breath for only 35 seconds of time. Suppose if a child lies below the water surface above 35 seconds it could be dangerous. So keeping that in mind, our system has been designed based on the average time taken by a child to hold his/her breath.

The sensor which moves along with the child tracks their movement and if at any case the child lies below the surface of the water for more than 30 seconds, the sensor activates the alarm. The alarm is placed above the water surface and it can ring at 100 decibel sound. This shows the people above the water surface that a child is drowning. If a child doesn't come under the surface of water for a longer period, then everything would be fine and the sensor would be continuously tracking the movement of the child.

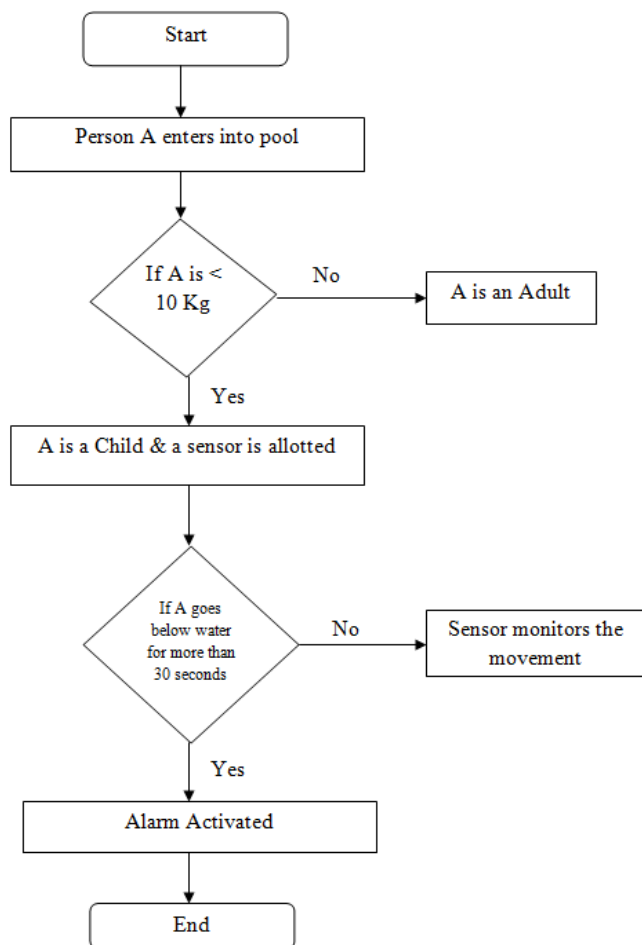


Fig 3: System flow diagram

## CONCLUSION:

In this paper, we have briefed the importance of security measures to be taken in a swimming pool which prevents the children from drowning. Also we have tried to solve this issue through our research work. We have made detailed study of underwater sensors by splitting the entire paper into three phases. In phase I we have made a survey of various underwater sensor network projects across the world and we have compared the quality of it against various criteria. In the second phase we have come out with a solution for the problem of super node localization that exists in the underwater sensor networks. We have shown the need for localization and how the localization error affects the time synchronization process among the communication of the underwater sensors in a network. We have proposed an algorithm

using PSO to overcome this issue. In third phase, based on the study of phase I and phase II, we have done with a deployment model that solves the problem of children drowning in the indoor swimming pool. Here in this deployment model we have made an assumption of tracking the movement of the children using mobile underwater sensors.

## REFERENCES:

- [1] Heidemann J.; Stojanovic M.; Zorzi M.; Underwater Sensor Networks: Applications, Advances, and Challenges, Royal Society, Phil. Trans. R. Soc. A (2012) 370, 158–175.
- [2] Akyildiz I.F.; Pompili D.; Melodia T.; Underwater acoustic sensor networks: research challenges, Ad Hoc Networks 3 (2005) 257–279
- [3] Hart J.K.; Martinez K.; Environmental Sensor Networks: A revolution in the earth system science, Earth-Science Reviews 78 (2006) 177–191
- [4] Dhillon S.S.; Chakrabarty K.; "Sensor placement for effective coverage and surveillance in distributed sensor networks", *IEEE Wireless Commun. Networking Conf.*, vol. 3, pp.1609 -1614 2003
- [5] Leonard N.; Paley D.; Lekian F.; Sepulchre R.; Frantoni D.; Davis R.; 2007. Collective motion, sensor networks, and ocean sampling. Proceedings of the IEEE 95 (1), 48–74
- [6] Teymorian A.Y.; Cheng W.; Ma L.; Cheng X.; Lu X.; Lu Z.; 3D Underwater Sensor Network Localization, IEEE Transactions on Mobile Computing, Vol. 8, No. 12, December 2009
- [7] Gouws R.; Nieuwoudt A.; Design and Cost Analysis of an automation system for Swimming Pools in South Africa. Proceedings of the 20<sup>th</sup> Domestic Use of Conference (DUE),2012
- [8] R.J. Urlick, Principles of Underwater Sound, McGraw-Hill, 1983.
- [9] Akyildiz I.F.; Pompili D.; State-of-the-art in protocol research for underwater acoustic sensor networks. In: WUWNet 2006. Proceedings of the 1st ACM international workshop on Underwater networks (2006)
- [10] J.G. Proakis, J.A. Rice, E.M. Sozer, M. Stojanovic, Shallow water acoustic networks, in: J.G. Proakis (Ed.), Encyclopedia of Telecommunications, John Wiley and Sons, 2003.

- [11] Bachrach J.; and Taylor C.; Handbook of Sensor Networks, chapter Localization in Sensor Networks. Wiley, 2005.
- [12] Chandrasekhar V.; Seah W.K.; Chao Y. S.; and Ee H.V.; "Localization in Underwater Sensor Networks - Survey and Challenges," Proc. ACM Int'l Conf. UnderWater Networks and Systems (WUWNet '06), pp. 33-40, Sept. 2006.
- [13] Liu J.; Zhou Z.; Peng Z.; Cui J.H.; Zuba M.; and Fiondella L.; "Mobi-Sync: Efficient Time Synchronization for Mobile Underwater Sensor Networks," IEEE Trans. Parallel and Distributed Systems (TPDS), Feb. 2013.
- [14] Zhou Z.; Cui J.H.; and Zhou S.; "Localization for Large-Scale Underwater Sensor Networks," Proc. Sixth Int'l IFIP-TC6 Conf. Ad Hoc and Sensor Networks, Wireless Networks, Next Generation Internet (Networking), May 2007.
- [15] Hussain N.T.M.; "Distributed Localization in Cluttered Underwater Environments," Proc. ACM Int'l Workshop UnderWater Networks (WUWNet), Sept. 2010.
- [16] Kennedy J.; and Eberhart R.C.; "Particle swarm optimization," *IEEE International Conference on Neural Networks*, vol.4, pp. 1942-1948, Perth, Australia, 1995
- [17] Del Valle Y.; Venayagamoorthy G.K.; Mohagheghi S.; Hernandez J.C.; and Harley R.; "Particle swarm optimization: Basic concepts, variants and applications in power systems," *IEEE Trans. Evol. Comput.*, vol. 12, no. 2, pp. 171-195, April 2008.

