



# Semantic Analysis of Spam Reviews and Recommendation Using Machine Learning

Vinit Vijay Magre

Research Scholar, Department of Information Technology

MGM's Jawaharlal Nehru Engineering College, Aurangabad

**Abstract-** Major Society of people using internet trust the contents of net. The liability that anyone can take off a survey give a brilliant chance to spammers to compose spam surveys about hotels and services for various interests. Recognizing these spammers and the spam content is a widely debated issue of research and in spite of the fact that an impressive number of studies have been done as of late towards this end, yet so far the procedures set forth still scarcely distinguish spam reviews, and none of them demonstrate the significance of each extracted feature type. In this application, use a novel structure, named NetSpam, which proposes spam features for demonstrating hotel review datasets as heterogeneous information networks to design spam review detection method into a classification issue in such networks. Utilizing the significance of spam features helps us to acquire better outcomes regarding different metrics on review datasets. The outcomes represent that NetSpam results with the previous methods and encompassed by four categories of features; involving review-behavioral, user-behavioral, review linguistic, user-linguistic, the first type of features performs better than the other categories. The contribution work is when user will search query it will display all top hotels as well as there is recommendation of the hotel by using user's point of interest.

**Keywords-** Social Media, Social Network, Spammer, Spam Review, Fake Review, Heterogeneous Information Networks, Sentiment Analysis, Machine Learning

## I. INTRODUCTION

Social Media portals play an important role in information propagation. Today a lot of people rely on the written reviews of other users in the selection of products and services. Additionally written reviews help service providers to improve the quality of their products and services. The reviews therefore play an important role in success of a business. While positive reviews can provide boost to a business, negative reviews can highly affect credibility and cause economic losses. Since anyone can leave comments as review, provides a tempting opportunity for spammers to write spam reviews which mislead users' choices. A lot of techniques have been used to identify spam reviews based on linguistic patterns, behavioral patterns. Graph based algorithms are also used to identify spammers. However many aspects are still unsolved. The general concept of NetSpam framework is to build a retrieved review dataset as a Heterogeneous Information Network (HIN) and to convert the problem of spam detection into a classification problem. In particular, convert review dataset as a HIN in which reviews are connected through different features. A weighting algorithm is then employed to calculate each feature's importance. These weights are then used to calculate the very last labels for reviews using both unsupervised and semi-supervised procedures.

NetSpam is able to find features' importance relying on metapath definition and based on values calculated for each review. NetSpam improves the accuracy and reduces time complexity. It highly depends to the number of

features used to identify spam reviews. Thus using features with more weights will result in detecting spam reviews easier with lesser time complexity.

## II. LITERATURE SURVEY

The pair wise features are first explicitly utilized to detect group colluders in online product review spam campaigns, which can reveal collusions in spam campaigns from a more fine-grained perspective.

A novel detecting framework [1] named Fraud Informer is proposed to cooperate with the pair wise features which are intuitive and unsupervised. Advantages are: Pair wise features can be more robust model for correlating colluders to manipulate perceived reputations of the targets for their best interests to rank all the reviewers in the website globally so that top-ranked ones are more likely to be colluders. Disadvantage is difficult problem to automate.

The paper [2] proposes to build a network of reviewers appearing in different bursts and model reviewers and their co-occurrence in bursts as a Markov Random Field (MRF) and apply the Loopy Belief Propagation (LBP) method to induce whether a reviewer is a spammer or not in the graph. A novel assessment method to evaluate the detected spammers automatically using supervised classification of their reviews. Advantages are: High accuracy, the proposed method is effective. To detect review spammers in review bursts. To detect spammers automatically. Disadvantage is: a generic framework is not used for detect spammers.

In [3] paper, the challenges are: The detection of fraudulent behaviors, determining the trustworthiness of review sites, since some may have strategies that enable misbehavior, and creating effective review aggregation solutions. The TrueView score, in three different variants, as a proof of concept that the synthesis of multi-site views can provide important and usable information to the end user. Advantages are: develop novel features capable of finding cross-site discrepancies effectively, a hotel identity-matching method with 93% accuracy. Enable the site owner to detect misbehaving hotels. Enable the end user to trusted reviews. Disadvantage is difficult problem to automate.

In [4] paper describes unsupervised anomaly detection techniques over user behavior to distinguish probably bad behavior from normal behavior. To find diverse attacker schemes fake, compromised, and colluding Facebook identities with no a priori labeling while maintaining low false positive rates. Anomaly detection technique to forcefully identify anomalous likes on Facebook ads. Achieves a detection rate of over 66% (covering more than 94% of misbehavior) with less than 0.3% false positives. The attacker is trying to drain the budget of some advertiser by clicking on ads of that advertiser.

In [5] paper, a grouped classification algorithm called Multi-typed Heterogeneous Collective Classification (MHCC) and then extends it to Collective Positive and Unlabeled learning (CPU). The proposed models can markedly increase the F1 scores of strong baselines in both PU and non-PU learning environment. Advantages are: Proposed models can markedly increase the F1 scores of strong baselines in both PU and non-PU learning settings. Models only use language self-contained features; they can be smoothly generalized to other languages. It detects a huge number of potential fake reviews hidden in the unlabeled set. Fake reviews hiding in the unlabeled reviews that Dianping's algorithm did not capture. The ad-hoc labels of users and IPs used in MHCC may not be very specific as they are computed from labels of neighboring reviews.

The paper [6] elaborates two distinct methods of reducing feature subset size in the review spam domain. The methods involves filter-based feature rankers and word frequency based feature selection. Advantages are: The first method is to simply select the words which appear most often in the text. Second method can use filter based feature rankers to rank the features and then select the top ranked features. Disadvantages are: There is not a one size fits all approach that is always better.

In [7] paper, providing an efficient and effective method to identify review spammers by incorporating social relations based on two assumptions that people are more likely to consider reviews from those connected with them as trustworthy, and review spammers are less likely to maintain a large relationship network with normal users. Advantages are: The proposed trust-based prediction achieves a higher accuracy than standard CF

method. To overcome the sparsity problem and compute the overall trustworthiness score for every user in the system, which is used as the spamicity indicator. Disadvantages are: Review dataset required.

The paper [8] proposes to detect fake reviews for a product by using the text and rating property from a review. In short, the proposed system (ICF++) will measure the honesty value of a review, the trustiness value of the reviewers and the reliability value of a product. Advantages are: Accuracy is better than ICF method. Precision is maximizing. Disadvantages are: Process need to be optimized.

The paper [9] provides an overview of existing challenges in a range of problem domains associated with online social networks that can be addressed using anomaly detection. It provides an overview of existing techniques for anomaly detection, and the manner in which these have been applied to social network analysis. Advantages are: Detection of anomalies used to identify illegal activities. Disadvantages are: Need to improve the use of anomaly detection techniques in SNA.

The paper [10] proposes a new holistic approach called SpEagle that utilizes clues from all metadata (text, timestamp, and rating) as well as relational data (network), and harness them collectively under a unified system to spot suspicious users and reviews, as well as products targeted by spam. SpEagle employs a review-network-based classification task which accepts prior knowledge on the class distribution of the nodes, estimated from metadata. Advantages are: It enables seamless integration of labeled data when available. It is extremely efficient.

Online Social Media websites play a main role in information propagation which is considered as an important source for producers in their advertising operations as well as for customers in selecting products and services. People mostly believe on the written reviews in their decision-making processes, and positive/negative reviews encouraging/discouraging them in their selection of products and services. These reviews eventually be an important factor in success of a business while positive reviews can bring benefits for a company, negative reviews can potentially impact credibility and cause economic losses. The fact that anyone with any identity can leave comments as reviews provides a tempting opportunity for spammers to write fake reviews designed to mislead users' opinion. These misleading reviews are then multiplied by the sharing function of social media and propagation over the web. The reviews written to change users' perception of how good a product or a service are considered as spam, and are often written in exchange for money.

Disadvantages:

1. There is no information filtering concept in online social network.
2. People believe on the written reviews in their decision-making processes, and positive/negative reviews encouraging/discouraging them in their selection of products and services.
3. Anyone create registration and gives comments as reviews for spammers to write fake reviews designed to misguide users' opinion.
4. Less accuracy.
5. More time complexity.

### III. PROPOSED METHODOLOGY

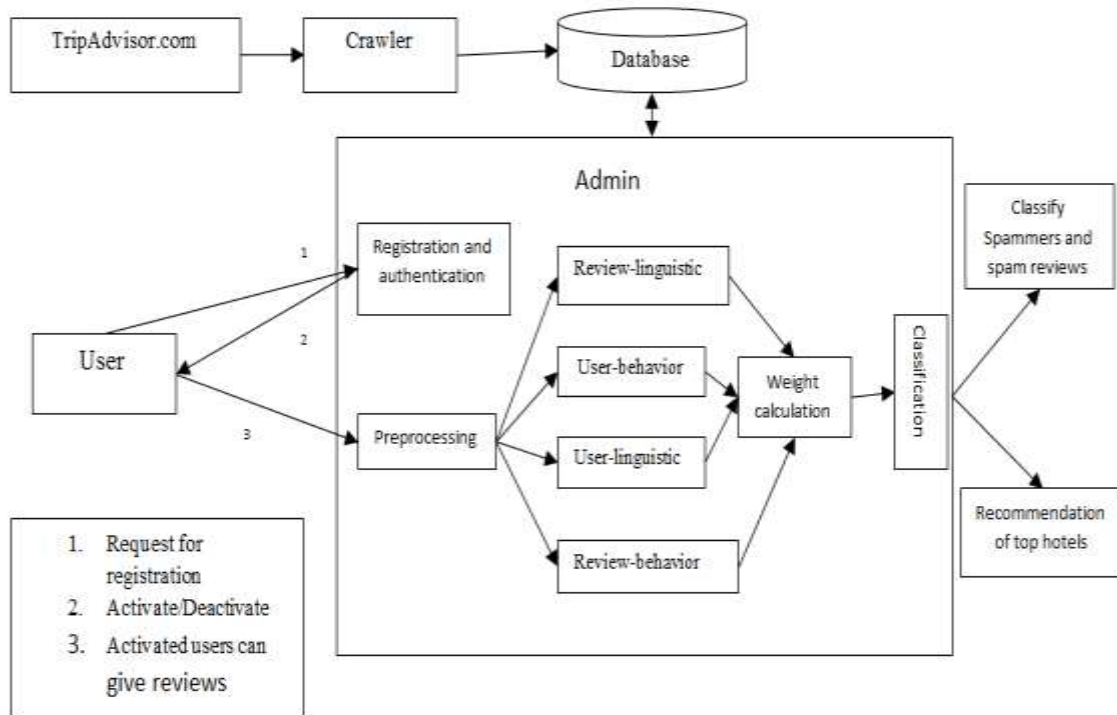
A novel proposed framework is to representative a given review dataset as a Heterogeneous Information Network (HIN) and to solve the issue of spam detection into a HIN classification issue. In particular, to show the review dataset as a HIN in which reviews are connected through different node types (such as features and users). A weighting algorithm is then employed to calculate each feature's importance (or weight). These weights are used to calculate the very last labels for reviews using both unsupervised and supervised procedures. Based on our observations, defining two views for features (review-user and behavioral-linguistic), the classified features as review behavioral have more weights and yield better performance on spotting spam reviews in both semi-supervised and unsupervised approaches. The feature weights can be added or removed for labeling and hence time complexity can be scaled for a specific level of accuracy. Categorizing features in four major categories (review-behavioral, user-behavioral, review-linguistic, user-linguistic), helps us to understand how much each category of features is contributed to spam detection.



### A. Proposed Architecture

The Fig.1 shows the proposed system architecture.

1. NetSpam framework that is a novel network based approach which models review networks as heterogeneous information networks.
2. A new weighting method for spam features is proposed to determine the relative importance of each feature and shows how effective each of features are in identifying spams from normal reviews.
3. NetSpam framework improves the accuracy against the state-of-the art in points of time complexity, which extremely depends to the number of features utilized to detect a spam review.



**Fig.1 Proposed System Architecture (Source: Author)**

The general concept of our proposed framework is to model a given review dataset as a Heterogeneous Information Network and to map the problem of spam detection into a HIN classification problem. In particular, model review dataset as in which reviews are connected through different node types. The fig. 2 shows the flowchart of NetSpam framework.

A weighting algorithm is then employed to calculate each feature's importance. These weights are used to calculate the very last labels for reviews using both unsupervised and supervised procedures. Based on the observations defining two views for features.

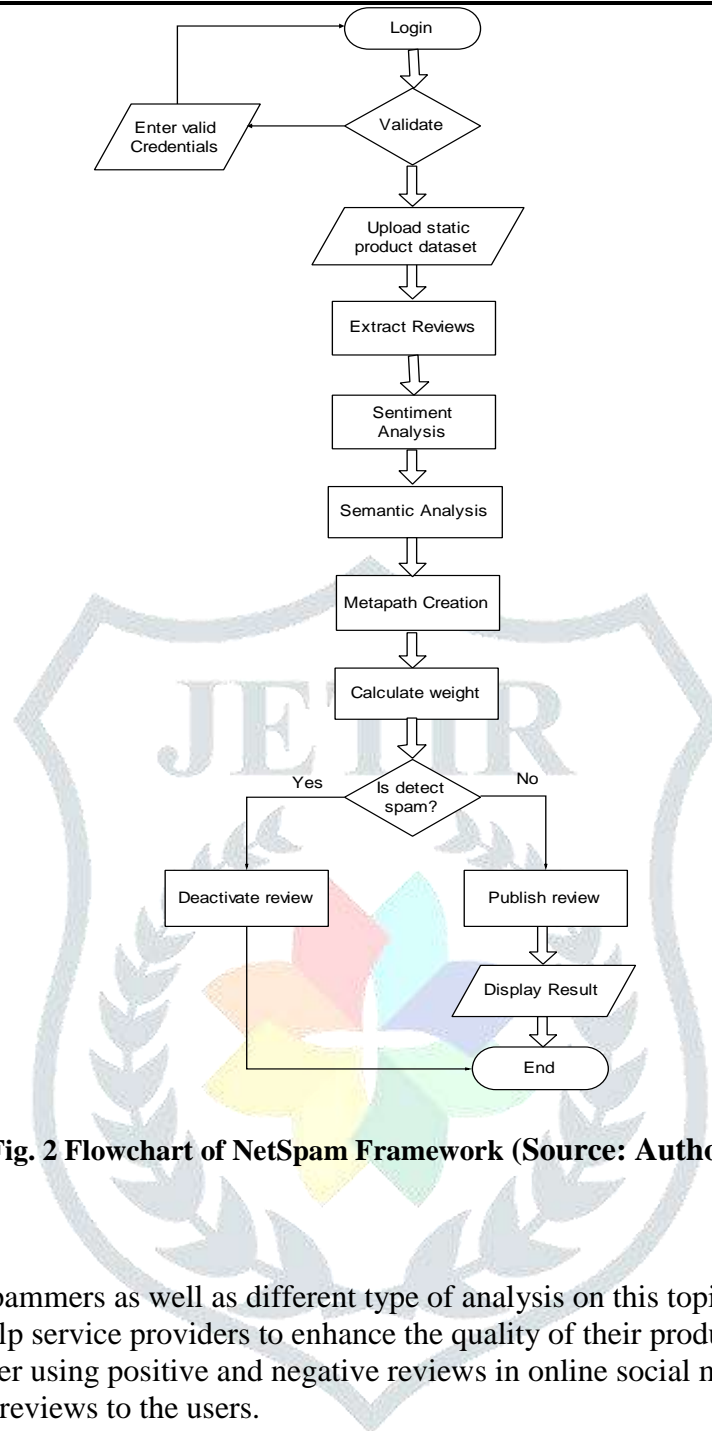


Fig. 2 Flowchart of NetSpam Framework (Source: Author)

Advantages:

1. To identify spam and spammers as well as different type of analysis on this topic.
2. Written reviews also help service providers to enhance the quality of their products and services.
3. To identify the spam user using positive and negative reviews in online social media.
4. To display only trusted reviews to the users.

## B. Algorithms

### 1. Sentiment Analysis Algorithm:

**Input:** Text File(comment or review) T, The sentiment lexicon L.

**Output:**  $S_{mt} = \{P, Ng \text{ and } N\}$  and strength S where P: Positive, Ng: Negative, N: Neutral

Initialization: SumPos = SumNeg =0, where,

SumPos: accumulates the polarity of positive tokens  $t_i$ -smt in T,

SumNeg: accumulates the polarity of negative tokens  $t_i$ -smt in T,

**Begin**

1. For each  $t_i \in T$  do
2. Search for  $t_i$  in L
3. If  $t_i \in Pos - list$  then
4.     SumPos  $\leftarrow$  SumPos +  $t_i - smt$
5. Else if  $t_i \in Pos - list$  then
6.     SumNeg  $\leftarrow$  SumNeg +  $t_i - smt$

```

7. End If
8. End For
9. If  $SumPos > |SumNeg|$  then
10.   Smt = P
11.   S = SumPos / (SumPos + SumNeg)
12. Else If  $SumPos < |SumNeg|$  then
13.   Smt = Ng
14.   S = SumNeg / (SumPos + SumNeg)
15. Else
16.   Smt = N
17.   S = SumPos / (SumPos + SumNeg)
18. End If

```

**End**

## 2. Index-based LSA (ILSA)

**Input:**

Matrix  $U$ ,  $X = S_r^{-1}$ , index  $I_\theta$ , query  $Q$  and parameter  $k$ ;

**Output:**

Top- $r$  most similar sorted documents;

**Process:**

Initialize  $\langle C, S \rangle$  by setting  $C$  and  $S$  as  $\emptyset$ ;

$\bar{Q} \leftarrow XQ$ ;

**for**  $t_j \in \{t_j | \bar{Q}(t_j) \neq 0\}$  **do**

**for**  $\langle d_i, \text{PartialSim}_\theta(d_i, t_j) \rangle \in I_\theta(t_j)$  **do**

    obtain  $\text{PartialSim}_\theta(d_i, t_j)$  from  $\langle d_i, \text{PartialSim}_\theta(d_i, t_j) \rangle$ ;

**if**  $d_i \in C$  **then**

$$S(d_i) \leftarrow S(d_i) + \frac{\bar{Q}(j)\text{PartialSim}_\theta(d_i, t_j)}{\sqrt{\sum_j (\bar{Q}(j))^2}};$$

**else**

$$S(d_i) \leftarrow \frac{\bar{Q}(j)\text{PartialSim}_\theta(d_i, t_j)}{\sqrt{\sum_j (\bar{Q}(j))^2}};$$

$C \leftarrow C \cup \{d_i\}$ ;

$S \leftarrow S \cup \{S(d_i)\}$ ;

**end if**

**end for**

**end for**

**return**  $\text{GetSortedCenter}(k, \langle C, S \rangle)$ ;

## 3. NetSpam Algorithm:

Input: review\_dataset, spam\_feature\_list, pre\_labeled\_reviews

Output: features\_importance (W), spamicity\_probability (Pr)

Step 1:  $u, v$ : review,  $y_u$ : spamicity probability of review  $u$

Step 2:  $f(x_{lu})$ : initial probability of review  $u$  being spam

Step 3:  $P_l$  metapath based on feature  $l$ ,  $L$ : features number

Step 4:  $n$ : number of reviews connected to a review

Step 5:  $m_u^{Pl}$ : the level of spam certainty

Step 5:  $m_{u,v}^{Pl}$ : the metapath value

Step 6: Prior Knowledge

Step 7: **if** semi-supervised mode

Step 8:       **if**  $u \in \text{pre\_labeled\_reviews}$

Step 9:        $y_u = \text{label}(u)$

Step 10:      **else**

```

Step 11:  $y_u = 0$ 
Step 12: else unsupervised mode
Step 13:  $y_u = \frac{1}{L} \sum_{l=1}^L f(x_{lu})$ 
Step 14: Network Schema Definition
Step 15: schema = defining schema based on spam-feature-list
Step 16: Metapath Definition and Creation
Step 17: for  $P_l \in \text{schema}$ 
Step 18: for  $u, v \in \text{review\_dataset}$ 
Step 19:  $m_u^{Pl} = \frac{|s \times f(x_{lu})|}{s}$ 
Step 20:  $m_v^{Pl} = \frac{|s \times f(x_{lv})|}{s}$ 
Step 21: if  $m_u^{Pl} = m_v^{Pl}$ 
Step 22:  $m_{u,v}^{Pl} = m_u^{Pl}$ 
Step 23: else
Step 24:  $m_{u,v}^{Pl} = 0$ 
Step 25: Classification - Weight Calculation
Step 26: for  $Pl \in \text{schemes}$ 
Step 27: do  $W_{Pl} = \frac{\sum_{r=1}^n \sum_{s=1}^n m_{r,s}^{Pl} \times y_r \times y_s}{\sum_{r=1}^n \sum_{s=1}^n m_{r,s}^{Pl}}$ 
Step 28: Classification - Labeling
Step 29: for  $u, v \in \text{review\_dataset}$ 
Step 30:  $Pr_{u,v} = 1 - \prod_{Pl=1}^L 1 - m_{u,v}^{Pl} \times W_{Pl}$ 
Step 31:  $Pr_u = \text{avg}(Pr_{u,1}, Pr_{u,2}, \dots, Pr_{u,n})$ 
Step 32: return (W, Pr)
    
```

**C. Spam Features**

This paper use metapath concept to establish link between reviews as follows. A metapath is defined as a path between two reviews, which indicates the connection of two reviews through their shared features. When talk about metadata, refer to its general definition, which is data about data. In our case, the data is the written review, and by metadata mean data about the reviews, including user who wrote the review, the business that the review is written for, rating value of the review, date of written review and finally its label as spam or genuine review.

Metapath is created using following features:-

**User-Behavioral (UB) based features:**

Burstiness: Spammers, usually write their spam reviews in short period of time for two reasons: first, because they want to impact readers and other users, and second because they are temporal users, they have to write as much as reviews they can in short time.

$$x_{BST}(i) = \begin{cases} 0 & (L_i - F_i) \notin (0, \tau) \\ 1 - \frac{L_t - F_t}{\tau} & (L_i - F_i) \in (0, \tau) \end{cases} \dots\dots\dots(1)$$

Where,

$L_i - F_i$  describes days between last and first review for  $\tau = 28$ .

Users with calculated value greater than 0.5 take value 1 and others take 0.

**User-Linguistic (UL) based features:**

Average Content Similarity, Maximum Content Similarity: Spammers, often write their reviews with same template and they prefer not to waste their time to write an original review. In result, they have similar reviews. Users have close calculated values take same values (in [0; 1]).

**Review-Behavioral (RB) based features:**

- Early Time Frame: Spammers try to write their reviews a.s.a.p., in order to keep their review in the top reviews which other users visit them sooner.

$$x_{ETF}(i) = \begin{cases} 0 & (L_i - F_i) \notin (0, \delta) \\ 1 - \frac{L_t - F_t}{\delta} & (L_i - F_i) \in (0, \delta) \end{cases} \dots\dots\dots(2)$$

Where,

$L_i - F_i$  denotes days specified written review and first written review for a specific business. We have also  $\delta = 7$ . Users with calculated value greater than 0.5 takes value 1 and others take 0.

- Rate Deviation using threshold: Spammers, also tend to promote businesses they have contract with, so they rate these businesses with high scores. In result, there is high diversity in their given scores to different businesses which is the reason they have high variance and deviation.

$$x_{DEV}(i) = \begin{cases} 0 & \text{Otherwise} \\ 1 - \frac{r_{ij} - avg_{e \in E^*j} r(e)}{4} > \beta_1 \end{cases} \dots\dots\dots(3)$$

Where,

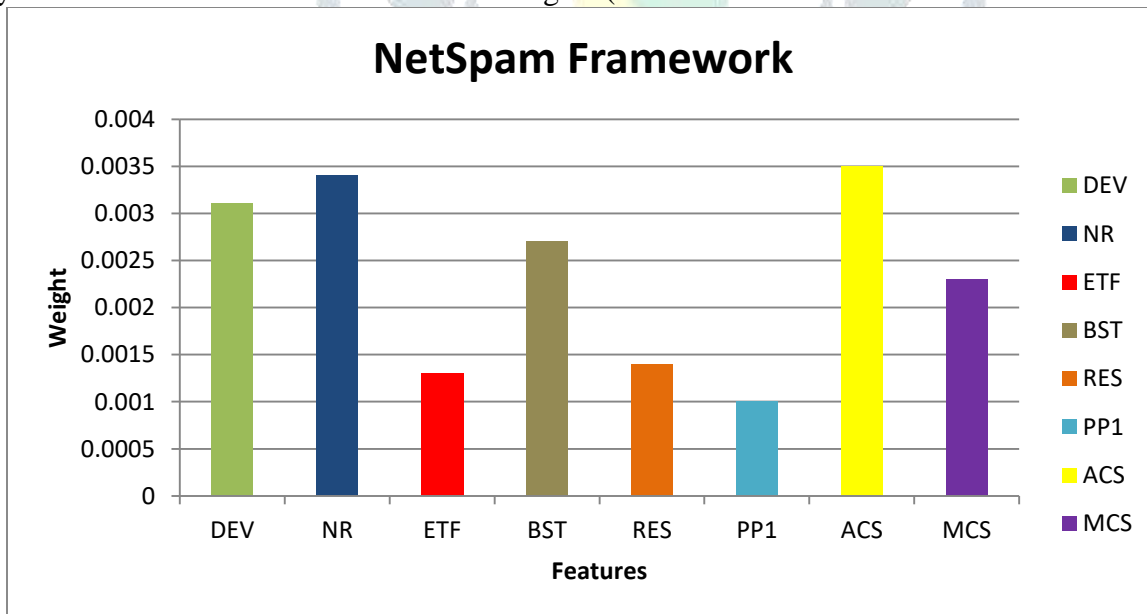
$\beta_1$  is some threshold determined by recursive minimal entropy partitioning. Reviews are close to each other based on their calculated value, take same values (in [0; 1]).

**Review-Linguistic (RL) based features:**

Number of first Person Pronouns, Ratio of Exclamation Sentences containing '!': First, studies show that spammers use second personal pronouns much more than first personal pronouns. In addition, spammers put '!' in their sentences as much as they can to increase impression on users and highlight their reviews among other ones. Reviews are close to each other based on their calculated value, take same values (in [0; 1]).

**IV. RESULT AND DISCUSSIONS**

Experimental evaluation outcomes shows the Tripadvisor API uses for hotel review dataset with higher percentage of spam reviews have better performance because when fraction of spam reviews increases, probability for a review to be a spam review increases and as a result more spam reviews will be labeled as spam reviews. The results of the dataset show all the four behavioral features are ranked as first features in the final overall weights. The Fig.3 graph shows the NetSpam framework features for the dataset have more weights and features for Review-based dataset stand in the second position. Third position belongs to User-based dataset and finally Item-based dataset has the minimum weights (for at least the four features with most weights).



**Fig.3 Feature weights for NetSpam Framework**

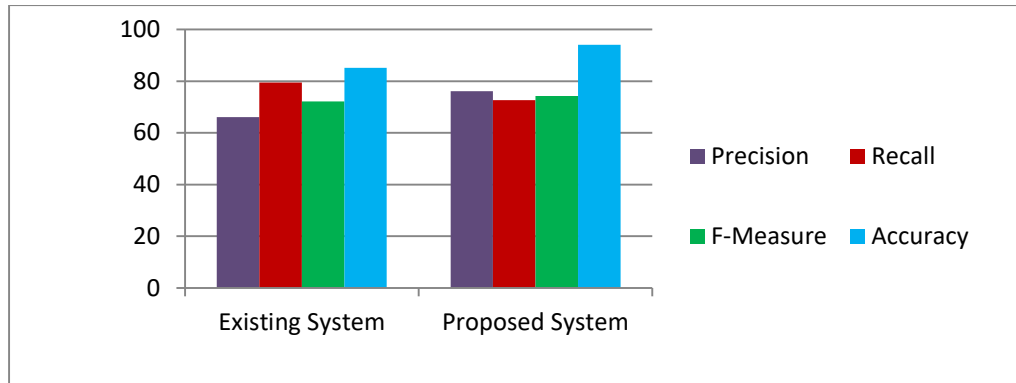
**TABLE I Weights of all features**

Features	DEV	NR	ETF	BST	RES	PP1	ACS	MCS
Weight	0.0031	0.0034	0.0013	0.0027	0.0014	0.001	0.0035	0.0023



**TABLE II Classification results of NetSpam Framework for hotel reviews**

Reviews	Count
Spam	257
Non-Spam	301

**Fig. 4 Performance Analysis between existing and proposed system**

The proposed NetSpam framework time complexity is  $O(e^2n)$ . The netspam framework accuracy is 94.06% which is better than SPaglePlus Algorithm accuracy is 85.14% on using TripAdvisor hotel dataset.

## V. CONCLUSION

This investigation presents a novel spam detection system in particular NetSpam in view of a metapath idea and another graph based strategy to name reviews depending on a rank-based naming methodology. The execution of the proposed structure is assessed by utilizing review datasets. The perceptions demonstrate that ascertained weights by utilizing this metapath idea can be exceptionally powerful in recognizing spam surveys and prompts a superior execution. Furthermore, found that even without a prepare set, NetSpam can figure the significance of each element and it yields better execution in the highlights' expansion procedure, and performs superior to anything past works, with just few highlights. In addition, in the wake of characterizing four fundamental classifications for highlights our perceptions demonstrate that the review behavioral classification performs superior to anything different classifications, regarding AP, AUC and in the ascertained weights. The outcomes likewise affirm that utilizing diverse supervisions, like the semi-administered strategy, have no detectable impact on deciding the vast majority of the weighted highlights, similarly as in various datasets. Contribution part in this project, for user when searches query as location he will get the top-k hotel lists as well as one recommendation of hotel by using personalized recommendation algorithm with the help of user's point of interests.

## REFERENCES

- [1] Ch. Xu and J. Zhang. Combating product review spam campaigns via multiple heterogeneous pairwise features. In SIAM International Conference on Data Mining, 2014.
- [2] G. Fei, A. Mukherjee, B. Liu, M. Hsu, M. Castellanos, and R. Ghosh. Exploiting burstiness in reviews for review spammer detection. In ICWSM, 2013.
- [3] A. j. Minnich, N. Chavoshi, A. Mueen, S. Luan, and M. Faloutsos. Trueview: Harnessing the power of multiple review sites. In ACM WWW, 2015.
- [4] B. Viswanath, M. Ahmad Bashir, M. Crovella, S. Guah, K. P. Gummadi, B. Krishnamurthy, and A. Mislove. Towards detecting anomalous user behavior in online social networks. In USENIX, 2014.
- [5] H. Li, Z. Chen, B. Liu, X. Wei, and J. Shao. Spotting fake reviews via collective PU learning. In ICDM, 2014.
- [6] M. Crawford, T. M. Khoshgoftaar, and J. D. Prusa. Reducing Feature set Explosion to Faciliate Real-World Review Sapm Detection. In Proceeding of 29th International Florida Artificial Intelligence Research Society Conference. 2016.
- [7] H. Xue, F. Li, H. Seo, and R. Pluretti. Trust-Aware Review Spam Detection. IEEE Trustcom/ISPA. 2015.
- [8] E. D. Wahyuni and A. Djunaidy. Fake Review Detection from a Product Review Using Modified Method of Iterative Computation Framework. In Proceeding MATEC Web of Conferences. 2016.

- [9] R. Hassanzadeh. Anomaly Detection in Online Social Networks: Using Datamining Techniques and Fuzzy Logic. Queensland University of Technology, Nov. 2014.
- [10] R. Shebuti and L. Akoglu. Collective opinion spam detection: bridging review networks and metadata. In ACM KDD, 2015.

