

# WIFI BASED INDUSTRY PROTECTION SYSTEM

**REKHA N**

Dept of ECE ,KSIT  
Bangalore,India

**SONIKA R**

Electronics & communication  
K S Institute of Technology  
Bangalore,India

**N SHREYA**

Electronics & communication  
K S Institute of Technology  
Bangalore,India

**SURAKSHA N**

Electronics & communication  
K S Institute of Technology  
Bangalore,India

**PREMA G**

Electronics & communication  
K S Institute of Technology  
Bangalore,India

**Abstract**—Security is a fundamental component that every individual seeks in their house, business, or industry in today's fast-paced world. Security is essential in the life of an individual to protect his property from being stolen or physically damaged. It is a duty of the owner, particularly in industries where workers deal with dangerous as well as sophisticated machines, to restrict and prohibit unnecessary access of people into restricted areas. Considering the global increase in crime, it is our responsibility to keep employees safe. To overcome the drawbacks of the previous methods, the proposed research work aims to provide a way of protecting people from entering areas that are restricted and avoiding industrial accidents. Alarms are used in traditional security systems to send the signal. Here Internet of Things is used to communicate with the device for sending and receiving required information and data through internet. Therefore, using a computer, smartphone, or other smart gadget, it may be managed and seen at any time and from any location.

**Keywords**— Internet of Things (IOT), Node MCU, MQ gas sensor, Flame sensor, DTH Sensor, ESP32, Relay.

## I. INTRODUCTION

The Internet of Things is a network of physical objects that can communicate data using sensors, electronics, software, and networking[1]. These systems do not require any human intervention. The Node MCU-based system transfers signals from several sensors, such as the temperature and humidity sensor and gas sensors, to the

microcontroller[2]. The result is then transmitted to the IOT platform by the microcontroller. The NodeMCU will receive information from the smoke and temperature sensors in the event of a fire, indicating the presence of smoke and variations in temperature. The microcontroller is linked to the Wi-Fi, buzzer, and exhaust fan. If there are any changes to the illumination, NodeMCU receives the information and activates the backup light[4][5]. When the temperature sensor detects a temperature higher than a specific threshold, the NodeMCU is configured to activate the buzzer. This value can be set to a particular value. The sensor values will be transmitted to the website (ThingSpeak) simultaneously. Because the data is monitored LIVE by the customer on an IOT platform, immediate action can be carried out[6]. A comprehensive sensor implementation across equipment and instruments, utilizing the Internet of Things (IoT) concept to regulate and monitor conditions, is one suggested solution to this problem. The planned gateway, which is responsible for data collection, processing, uploading, and user control information management, is a key element of the proposed system. Interestingly, in situations when network connections are lost, the system makes sure that the data is saved for later upload when the network is restored. Beyond standard limits, the Internet of Things anticipates a wide range of tangible components, including personal devices like tablets, smartphones, and digital cameras[7][8]. This method represents a major advancement in the integration of technology for increased efficiency as it foresees a spike in linked devices offering data, information, and services.

## II. LITERATURE SURVEY

Puli Keerthija, Nayaka Hema, Palawar Vaishnavi, and Dr. M. Shyam Sunder [1] focuses on "GSM-Based Industrial Fault Detection System". The research explores the utilization of GSM technology for real-time monitoring in industrial processes. GSM, or Global System for Mobile Communications, serves as the foundation for wireless communication, and its application in industrial settings is examined for its potential benefits. In the existing body of literature, several studies have delved into the integration of GSM for monitoring purposes in the process industry. These investigations collectively shed light on the advantages and challenges associated with employing GSM technology. Notable findings reveal the efficacy of GSM in providing real-time data communication and its positive impact on enhancing monitoring capabilities within various industrial processes. As part of this literature survey, it is crucial to contextualize the GSM-based monitoring approach by comparing it with alternative technologies prevalent in the industry. This comparative analysis aims to elucidate the unique advantages offered by GSM while acknowledging any limitations or challenges encountered in its implementation.

In the recent work by Dr. B. Rambabu, S. Megha Syam, and K. Lakshmi Narayana [2] the focus is on the development of a "GSM-based industrial protection system." This study explores the integration of GSM technology to enhance security and protection measures in industrial settings. The research delves into the application of GSM for real-time monitoring and communication, aiming to establish an effective system for safeguarding industrial facilities. Through this investigation, the authors contribute to the expanding field of industrial protection systems, leveraging the capabilities of GSM to address security challenges and ensure the robust safeguarding of critical infrastructure.

P. Meenakshi, Mohammed Nazeem, V. Sravya, and Dr. L. Malliga [3] have introduced a cutting-edge "GSM-Based Industrial Security System." This research project focuses on leveraging Arduino technology to develop a comprehensive system dedicated to

detecting and preventing industrial safety hazards. By combining the capabilities of Arduino with a tailored approach to industrial safety, the authors contribute to advancing solutions that enhance workplace safety through effective detection and proactive prevention measures.

V.H. Patil, P.B. Patel, A.D. Sonar and Sharada P[4] "GSM-based monitoring in process industry." have introduced a cutting-edge "GSM-Based Industrial Security System." This study is dedicated to the integration of GSM technology for the enhancement of industrial security measures. By leveraging the capabilities of GSM, the authors aim to develop a robust security system tailored for industrial settings. This research marks a significant contribution to the field, showcasing the potential of GSM-based solutions in fortifying industrial security and safeguarding critical infrastructure.

Mrs. D. Aruna Kumari and Dr. Karunaiah Bonigala [5] have introduced a ground breaking "Arduino-Based Industrial Safety Detection and Prevention System" This study is dedicated to harnessing GSM technology for the purpose of detecting faults within industrial systems. By leveraging the capabilities of GSM, the authors aim to create an efficient fault detection system tailored for industrial applications. This research signifies a noteworthy contribution to the field, showcasing the potential of GSM-based solutions in early fault detection and prevention in industrial environments.

Subham Raut "Industry based security system using GSM and Arduino"[6] numerous advantages emerge from the concept. The integration of GSM technology into industrial automation processes presents a paradigm shift, enabling remote monitoring and control that significantly enhances operational efficiency. This approach not only proves cost-effective by leveraging GSM's economical communication capabilities but also ensures swift and efficient responses to potential issues, reducing downtime and contributing to enhanced safety measures. The scalability and flexibility of GSM-based systems provide adaptability to changing industrial needs, while the global connectivity of GSM enables standardized monitoring across diverse geographical locations. Furthermore, the concept aligns seamlessly with

the Internet of Things (IoT), offering a user-friendly interface and facilitating data logging and analysis for improved decision-making. Ultimately, GSM-based industrial automation emerges as a transformative solution, optimizing processes, reducing costs, and ushering in a new era of intelligent and responsive industrial systems.

### III. BLOCK DIAGRAM

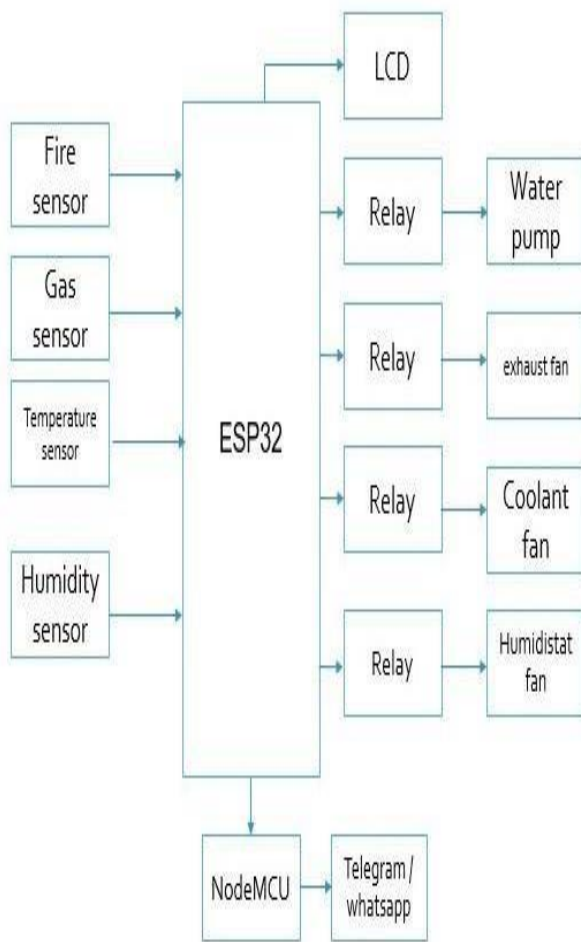


Fig 1: Block diagram

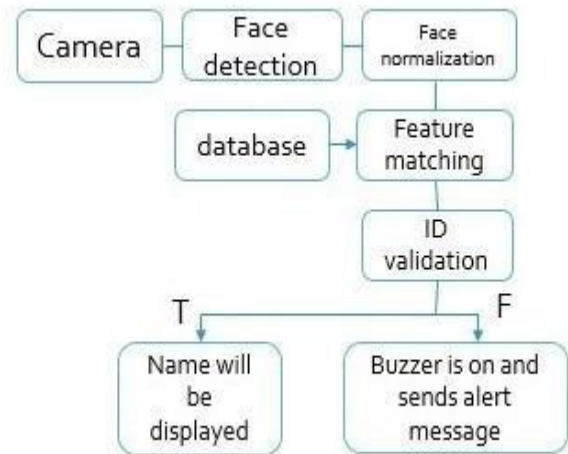


Fig 2: Block diagram for face recognition

### COMPONENTS SPECIFICATION:

#### A. NodeMCU

NodeMCU is a versatile open-source firmware and development board designed specifically for IoT applications, featuring Lua-based programming. Tailored for seamless integration into the Internet of Things (IoT) ecosystem, NodeMCU incorporates firmware compatible with the ESP8266 Wi-Fi System-on-Chip (SoC) from Expressive Systems [9]. The hardware component of NodeMCU is built upon the ESP-12 module, providing a robust foundation for IoT-based projects. This combination of software and hardware makes NodeMCU an accessible and powerful platform for developers and enthusiasts looking to implement IoT solutions with ease.



Fig 3: NodeMCU

### B. ESP32

The ESP32 stands as a robust and versatile microcontroller with integrated Wi-Fi and Bluetooth capabilities, designed to empower a myriad of electronics and Internet of Things (IoT) applications. Its dual-core ten silica LX6 processor, operating at up to 240 MHz, ensures high computational efficiency for diverse tasks. With built-in Wi-Fi and Bluetooth (BLE), the ESP32 facilitates seamless wireless communication, making it a favored choice for IoT projects. Its generous Flash memory and RAM, coupled with a variety of peripheral interfaces, provide flexibility for interfacing with sensors and devices[10]. Noteworthy features include low-power operation, support for Over-The-Air updates, and compatibility with popular development environments like Arduino IDE and Platform IO. Boasting a vibrant and supportive community, the ESP32 remains a go-to microcontroller for developers engaged in creating innovative solutions in areas ranging from home automation and robotics to sensor networks and beyond[9]. Its open-source nature further encourages customization, making the ESP32 a cornerstone in the realm of embedded systems and IoT development.



Fig 4: ESP32

### C. MQ2 Gas sensor

The MQ-2 Smoke Sensor is a highly versatile gas sensor widely recognized for its effectiveness in detecting a range

of gases, including smoke, methane, propane, and carbon monoxide. Operating on the principle of conductivity changes in its semiconductor material, the sensor offers valuable applications in fire detection systems, gas leakage alarms, and industrial safety measures. With a capacity to integrate seamlessly with microcontrollers like Arduino or Raspberry Pi, the MQ-2 sensor provides analog voltage output, allowing for real-time monitoring and control. However, users should exercise caution, considering factors such as cross-sensitivity and the necessity for proper calibration to ensure accurate and reliable readings[10]. Overall, the MQ-2 Smoke Sensor stands as a crucial component in enhancing safety by offering early detection capabilities for various gases in diverse environments.



Fig 5: MQ2 Gas Sensor

### D. Water Pump

A water pump, a fundamental mechanical apparatus, serves the pivotal function of transferring water from one location to another across a diverse spectrum of applications. Distinguished by various types, including centrifugal pumps, submersible pumps, jet pumps, reciprocating pumps, and axial flow pumps, each variant is meticulously crafted to cater to specific needs [11]. Centrifugal pumps, employing a spinning impeller, are ubiquitous in numerous water transfer scenarios, while submersible pumps find their niche submerged in wells for efficient water extraction.



Fig 6: Water Pump

#### E. Coolant Fan

A coolant fan, an integral component in automotive and industrial cooling systems, serves the vital role of dissipating heat generated by engines or machinery. Also known as a radiator fan, it operates to regulate and maintain optimal temperatures, preventing overheating and ensuring efficient performance. Typically located near the radiator, the coolant fan activates in response to temperature sensors or engine control units, drawing air through the radiator to facilitate the cooling process.



Fig 7: Coolant Fan

#### F. Flame Sensor

The flame sensor, a vital part of fire detection systems, works by identifying infrared radiation released by an open flame. These sensors are highly sensitive and respond particularly to the particular wavelengths that are associated with fires. Within their authorized range, they provide fast and accurate detection[15]. Flame sensors are frequently incorporated into gas appliances, industrial furnaces, and fire alarm systems. They are essential for guaranteeing the prompt detection of possible fire threats. These devices, which are distinguished from conventional heat sources by

characteristics like UV and IR sensors, are made with precision and safety regulations in mind.



Fig 8: Flame Sensor

#### G. DHT-11 Sensor

The DHT-11 Digital Temperature and Humidity Sensor is a basic, ultra-low-cost digital temperature and humidity sensor. It uses a capacitive humidity sensor and a thermistor to measure the surrounding air and spits out a digital signal on the data pin (no analog input pins needed)[12]. For measuring humidity they use the humidity sensing component which has two electrodes with moisture holding substrate between them. So as the humidity changes, the conductivity of the substrate changes or the resistance between these electrodes changes.

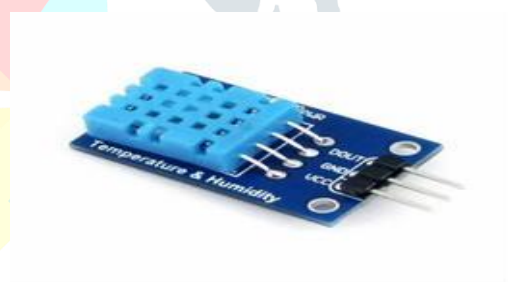


Fig 9: DHT-11 Sensor

#### H. Relay

A relay, an essential component in electrical systems, operates as an electromechanical switch governed by an electric current. Comprising a coil, an armature, and sets of contacts, the relay's functionality hinges on the generation of a magnetic field when the coil is energized [14]. This magnetic influence prompts the movement of the armature, resulting in the opening or closing of contacts and thereby controlling the flow of current in the circuit. With diverse types, including electromagnetic and solid-state relays,

relays find applications across industrial, automotive, and home automation systems Their adaptability extends to controlling motors, lights, heaters, and various devices. Providing electrical isolation, relays safeguard control systems from potential high-voltage damage, ensuring reliability and longevity. The flexibility in configurations, such as normally open, normally closed, and changeover contacts, caters to diverse application requirements [13]. In industrial settings, relays are often DIN rail-mounted, offering a standardized and efficient arrangement for organizing multiple relays



Fig 10: Relay

I. LCD Display

Liquid Crystal Displays (LCDs) represent a pervasive flat-panel display technology that harnesses the unique properties of liquid crystals to generate visual outputs. Constructed with two layers of glass or plastic, encapsulating a layer of liquid crystals equipped with transparent electrodes, LCDs form the fundamental structure. Pixels, composed of subpixels with red, green, and blue color filters, constitute the building blocks, enabling the creation of a diverse spectrum of colors by adjusting subpixel intensity. Illumination is facilitated through a backlight source, commonly LED or CCFL technologies, providing essential brightness.



Fig 11: LCD Display

IV. FLOW CHART

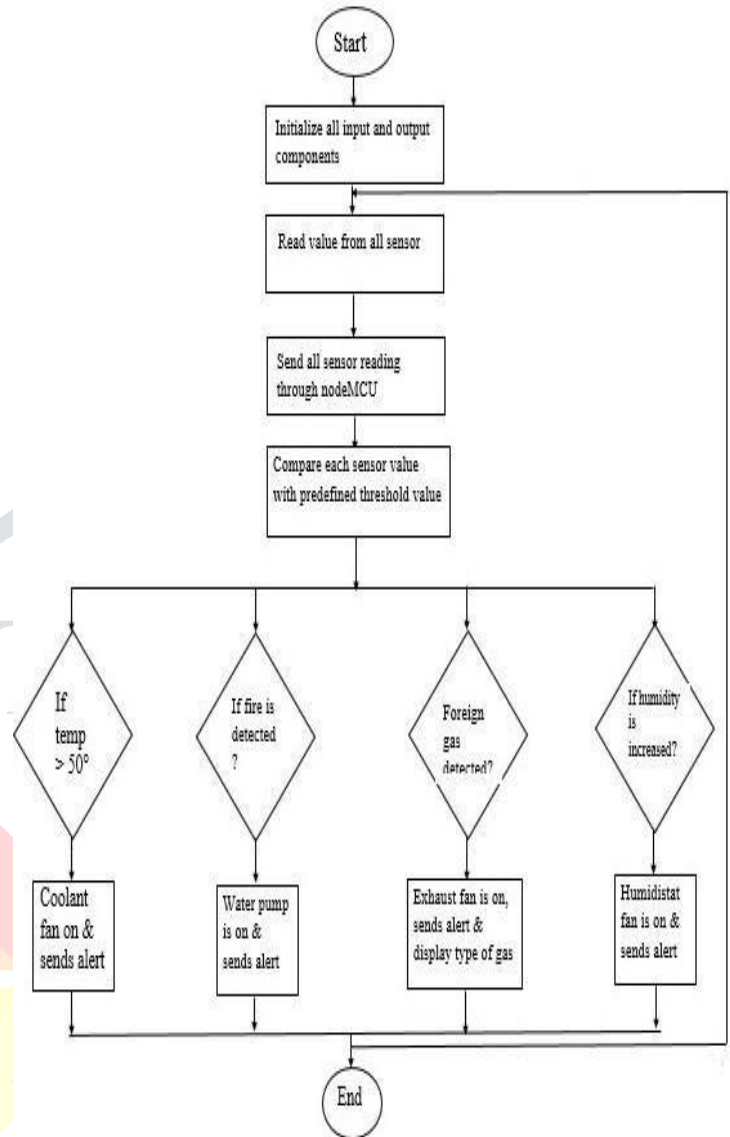


Fig 12: Flow chart

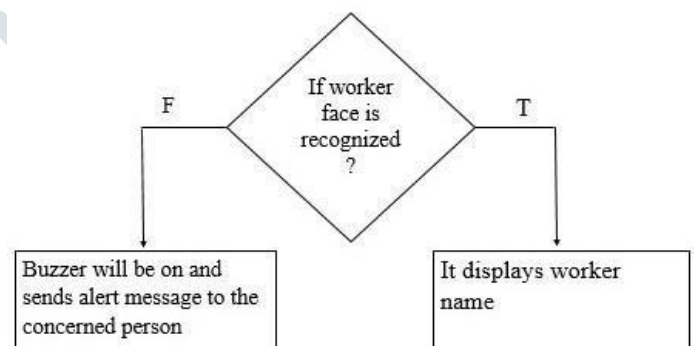


Fig 13: Flow chart for face recognition system

## V. CONCLUSION

In summary, we may obtain real-time data by implanting these systems. Automating industry processes through NodeMCU is a promising venture, offering enhanced efficiency, remote control, and data monitoring. Its low-cost, scalability, and compatibility with various sensors make it a versatile solution. However, considerations like security, reliability, and integration with existing systems are crucial for successful implementation. Automating industries using NodeMCU offers several advantages, such as remote monitoring, control, and efficiency improvements. This project is involved integrating sensors, NodeMCU boards, and possibly other IoT devices to streamline processes[8]. Its success is evaluated based on factors like increased productivity, reduced human intervention, cost savings, and enhanced safety. The conclusion would summarize achieved objectives, challenges faced, results obtained, and potential areas for further improvement or expansion, emphasizing the project's impact on industrial automation.

## VI. REFERENCES

- [1] Puli Keerthija, Nayaka Hema, Palawar Vaishnavi, Dr. M. Shyam Sunder "GSM based industrial fault detection system" IRJMETS , Volume 3, Issue 11, November 2021.
- [2] Dr. B. Rambabu ,S. Megha syam,K. Lakshmi Narayana "GSM based industrial protection system" IJCRT, Volume 11, Issue 3, March 2023.
- [3] P. Meenakshi, Mohammed Nazem, V Sravya, Dr.I.Malliga "GSM based industrial security system" Journal of engineering sciences, volume 13, Issue 11, 2022.
- [4] V.H patil ,P.B.patel, A.D sonar ,sharada "GSM based monitoring in process industry" Research gate, 2021 .
- [5] Mrs.D.Aruna Kumari , Dr. Karunaiah Bonigala "Arduino Based Industrial Safety Detection and Prevention System" IJIRT , Volume 10, Issue 3, August 2023.
- [6] Subham Raut "Industry based security system using GSM and Arduino" IJASRET, Volume 5, Issue 3, March 2020.
- [7] Alumona T.L et al. "GSM based smart security system using Arduino" IJARCCCE, Volume 8, Issue 10, October 2019.
- [8].N.N.Mahzan et al. "Design of an Arduino-based home alarm system with GSM module" Journal of physica , Volume 5, Issue 10 ,2017.
- [9] Zappi P., Farella E., Benini L., "Hydroelectric Infrared Sensors based Distance Estimation" IEEE Publication, 716-719, 2019.
- [10] Hosticka, B. J., "Analog Circuits for Sensors" Inst. Of Fraunhofer Microelectron. Circuits & Syst., IEEE Publication, E-ISBN:978-1-4244-1124-5, 2007.
- [11] Al-Ali A. R., Rousan M. A., Mohandes M., "GSM-based Wireless Home Appliances Monitoring & Control System", IEEE International Conference, ISBN: 0-7803-8482-2, 2021.
- [12] Moshiri B., Khalkhali A. M., Momeni H. R., "Designing a Home Security System Using Sensor Data Fusion with DST and DSMT Methods". Tehran Univ., Tehran; IEEE Publication, 2020.
- [13] Z. Ahmed, "HOME AUTOMATION" National Research Conference on Management and Computer Sciences, 2018.
- [14] R. Hariprakash, G. Venkatramu, S. Ananthi, "University of Madras, K. Padmanahan "Some Problem and Methods for Remotely Controllable Automatic Home Security System" ICSNC, 3rd International Conference Publication, ISBN:978-0-7695-3371-1, 2008.
- [15] Priyanka Vijaykumar Gobbur, Minakshee Saybu Dhotre, Kajal Vasant Mane, and V.S. Patk on "GSM-Based Industrial Automation," vol.9, Issue 3, March 2020.