



BREAST CANCER DETECTION USING DEEP LEARNING

¹JENIFA CHRISTY B, ²PREETHI E, ³RANJITHA R,⁴MRS.B.DURGADEVI,
⁵DR.D.USHA, ⁶DR.T.KUMANAN

^{1,2,3} Students, Department of Computer Science and Engineering , Dr.M.G.R Educational And Research
Institute, Maduravoyal, Chennai-95, Tamil Nadu, India

⁴ Associate Professor, ^{5,6} Professor, Dr.M.G.R Educational And Research Institute, Maduravoyal,
Chennai-95, Tamilnadu, India

ABSTRACT

Breast most cancers is a regarded and growing disease international. Most breast cancers arise more regularly in ladies. Early detection of most cancers is the important thing to fighting cancer. There are many motives why early detection can reduce mortality. A lot of studies work has been finished on breast cancer. This is the most commonplace technique in system learning studies. There are many preceding research on gadget gaining knowledge of. Machine Learning Algorithms with Decision Tree, KNN, SVM, Simplex and many others. They offer a excessive degree of expertise of their discipline. But now a wholly new approach has been advanced to discover the biggest most cancers cells. A new technique to deep getting to know has been evolved. Deep gaining knowledge of is the utility of deep studying techniques to address weaknesses. Commonly used deep studying techniques in artificial intelligence technology are Convolutional Neural Networks, Recurrent Neural Networks, High Belief Networks and so forth. Deep getting to know algorithms provide higher results than understanding devices. It represents the best images capabilities. In our overview, we used CNN for image classification. Most of our research is mainly photo-based totally, and the CNN technique is famous. This article consists of critiques from all authors.

KEYWORDS : Breast Cancer, Women, Early Detection, System Learning, Deep Learning, CNN

I INTRODUCTION

The ailment happens while normal cells within the copper plate start to divide and engage with other everyday cells, causing them to grow to be malignant. Breast most cancers is the most serious and extreme sickness within the global. Psidium is risky, cancerous and may unfold to diverse organs. Prayer and Serigraph are in a single body [1]. This then will become an attack on cancer cells. The glands and ducts that produce milk are It is also distributed thru the blood to various organs. There are many varieties of breast most cancers and its value is growing unexpectedly [2].

According to WHO, 627,000 ladies had been recognized with multiple breast most cancers in 2018. Breast most cancers, the most not unusual disease in the international, originated inside the United States. Archery inside the 4 bureaucracies. The first type of maximum cancers is ductal carcinoma in situ, that's a precursor to breast most cancers and is discovered within the lining of the milk duct of the breast. The 2d form of breast cancer is more commonplace and is recognized in 70-eighty percent of cases. Type 0.33 breast most cancers is normally referred to as inflamm`atory breast cancer, and it grows hastily and aggressively. In maximum cases, breast cancer is a most cancers wherein breast cells invade the pores and skin and lymph vessels. The fourth form of breast cancer is metastatic disorder of the breast, which spreads to different parts of the body [3].

II OBJECTIVE

- The overall classification accuracy using this method is 98%, which is a good sign.
- Reducing the number of false positives and false negatives and providing more accurate prognosis to cancer patients.

III SCOPE OF THE PROJECTS

It lets in easy and reasonably-priced to find out about lung most cancers patients.

The purpose of this text is to come across breast most cancers cells at an early stage. Breast most cancers diagnosis is a highly advanced photo processing that provides function extraction and submit-remedy selection consequences. ACT (computed tomography) system takes an picture of the chest as enter.

IV EXISTING SYSTEM

Based on historical information and cutting-edge situations, many researchers have now evolved splendid strategies to assess and are expecting the danger of all types of breast most cancers. Examining information about maximum breast most cancers sufferers to identify risks have become a prime attention of her research. But the maximum essential requirement is a complete reporting machine of historic and current records. Clinical oncologists can use their samples to make decisions. But we need to be aware of the different sorts of people at chance [4]. To distinguish your self from wrong, it's far beneficial to have a in basic terms rule-based engine that can recognize early alerts and examine their occurrences advert hoc.

Dis-Advantages

Latest device provides a automated picture processing method that accurately diagnoses many forms of lung cancer with the aid of quantifying the pancreatic tumor (superficial) and its location.

It is likewise important to remember the fact that it can help decide whether a tumor is cancerous or now not. The device we describe in this article detects MRI of a pancreatic tumor at all limitations and provides an accurate evaluation based on morphological pattern with an excellent histogram [5].

V PROPOSED SYSTEM

Most varieties of breast cancer are challenging to diagnose because it's far a totally common and insidious ailment. In most cases, the more breast most cancers grows each three hundred and sixty five days, the less probably it's miles to be cured. Machine studying and deep mastering strategies had been used to detect numerous forms of breast cancer. Based on preceding research, it turned into concluded that the method of introducing devices offers first rate consequences in its field. Previous studies have been conducted with numerous tools to advantage military understanding with some upgrades and additions to the dataset to improve normal overall performance. But we can already conclude that gadget mastering gives higher consequences for linear objects. The same became accomplished in preceding studies that provided information on the kinds of snap shots that the pc failed. A novel technique is used to remedy the trouble of machine mastering technique. It has a deep mastery over presently evolved technologies which are continuously being used in technical know-how. Deep gaining knowledge of is based on the artwork of embedding a given picture using gradient or pace gradient. To accommodate the horn, the mattress is every so often not noted.

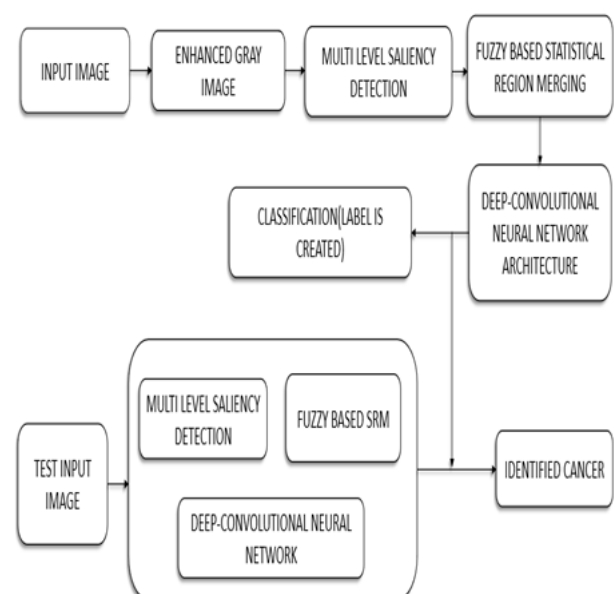
Advantages

It may be very smooth to implement and like minded.

To do this work, we used such an set of rules, and then it may be drawn fast.

All centers are available here

VI ARCHITECTURE DIAGRAM

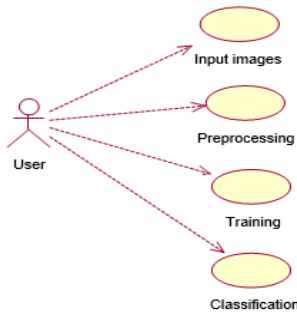


VII LITERATURE REVIEW

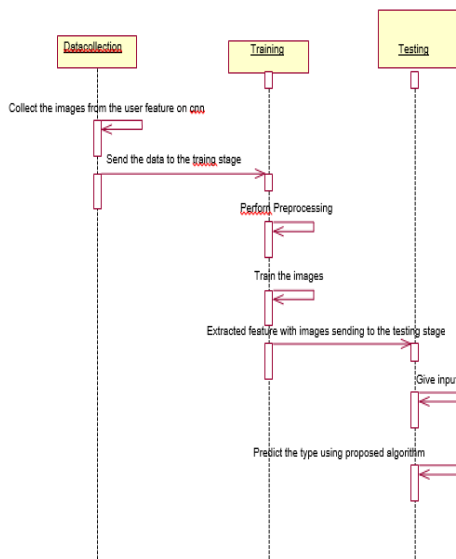
According to worldwide data, breast cancer (BC) is one of the most common sicknesses in girls worldwide, accounting for the majority of cancer cases and cancer-associated deaths, which has come to be a prime public health trouble in latest society. Early detection of many forms of breast cancer increases the chances of survival, permitting patients to acquire suitable clinical treatment. Most cancers of this kind get up from human breast cells, commonly from the lobules or milk ducts inside the milk ducts.

S.No	TITLE	AUTHOR	DESCRIPTION
1	Breast Cancer Detection Using Deep Learning Algorithms (2022)	GeethaP, Sneha R, Sneka.S, Subhiksha.R	Slow Detection , Useless Remedies & Low Chances of Survival
2	Analysis of XGBoost to Predict Progression of Breast Cancer(2021)	X.Zhong and H.Zheng	Complexity, Price, Character Bias, & Inaccuracy
3	Improved Threshold Based and Automated Segmentation for Breast Cancer in Mammogram Images(2020)	D.Zebari , A.Abdul ,H.HaroonH.Hamed.	Tedious & Time Consuming
4	Channel Attention Module Pooling for Breast Cancer Segmentation in an Ultrasound Image(2020)	H. Lee, J. Park and J. Y. Hwang,	Lower Pace & Accuracy
5	Comparison of Breast MRI Tumor Classification Using Human-Engineered Radiomics, (2020)	H. M. Whitney , and M. L. Giger	Lack of Transparency
6	Three-Dimensional Whole Breast Segmentation Adaptation for Chest-Wall Line Detection(2019)	,M. -K. Hsieh, L. Pantalone and D. Kontos,	Lower Pace & Complexity
7	A Generic-Driven Wrapper Embedded for Breast Cancer Classification (2019)	Q.Wunir iW.Huafu	Lack of Transparency
8	Predicting Early Stage Breast Cancer by Follow-Up Clinical Data(2019)	B. Fu, P. Liu, J. Lin, L. Deng, K. Hu and H. Zheng	Character Bias & Accuracy

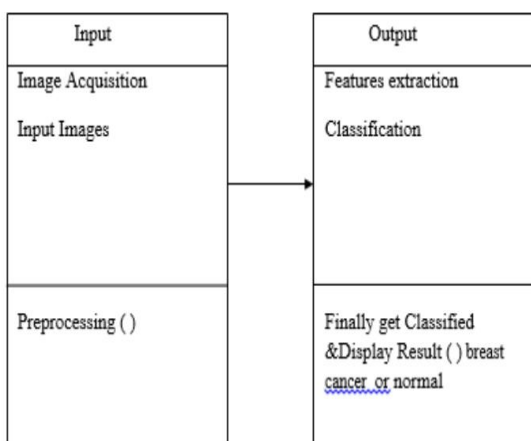
VIII USE CASE DIAGRAM



SEQUENCE DIAGRAM



X CLASS DIAGRAM



XI MODULES

- a) Dataset
- b) Importing the necessary libraries
- c) Retrieving the images

- d) Splitting the data
- e) Building the model
- f) Apply the model and plot the graphs for accuracy and loss
- g) Accuracy on test set
- h) Saving the Trained Model
- i) Detection

IX

a) Dataset

In this module, we developed the system to get the input dataset for training and testing purposes. We have taken the dataset from Breast Cancer Detection using Image Processing. Link: <https://www.cancerimageingarchive.net/collections/> The dataset consists of 500 breast cancer images.

b) Importing the necessary libraries

We will be using Python language for this. First we will import the necessary libraries such as, Keras (building the main model) Sklearn (splitting the training and test data) PIL (converting the images into an array of numbers) and other libraries such as pandas, numpy, matplotlib, and tensor flow.

c) Retrieving the images splitting the data

We will retrieve the images and their labels. Then resize the images to (224,224) as all images should have the same size for recognition. Then convert the images into numpy array.

d) Splitting the data

Split the dataset into train and test. 80% train data and 20% test data.

Convolutional Neural Networks

The objectives behind the first module of the course 4 are:

1. To understand the convolution operation.
2. To understand the pooling operation
3. Remembering the vocabulary used in convolutional neural networks (padding, stride, filter, etc.)

4. Building a convolutional neural network for multi-class classification in images

e) Building the model

For building, we will use a sequential model from the Keras library. Then we will add the layers to make a CNN. In the first 2Conv2D layers we have used 32 filters and the kernel size is (5,5). In the MaxPool2D layer we have kept the pool size(2,2) which means it will select the maximum value of every 2x2 area of the image. In the dropout layer, we have kept a dropout rate = 0.25 which means 25% of neurons are removed randomly. We apply these 3 layers again with some change in parameters. Then we apply a flattened layer to convert 2-D data to 1-D vector. This layer is followed by a dense layer, a dropout layer, and a dense layer again. The last dense layer outputs, 2 nodes as the breast cancer or, not. This layer uses the softmax activation function which gives probability value and predicts which of the 2 options has the highest probability.

f) Apply the model and plot the graphs for accuracy and loss

We will compile the model and apply it using the fit function. The batch size will be 2, then we will plot the graph for accuracy and loss. We got average validation accuracy of 100% and average training accuracy of 98.7%.

g) Accuracy on test set

We got an accuracy of 100% on the test set.

h) Saving the Trained Model

Once you're confident enough to take the trained and tested model into the production-ready environment, the first step is to save it into a .h5 or .pkl file using a library like Pickle.

i) Detection

Make sure you have a pickle installed in your environment. Next, Let's import the module and dump the model into the .pkl file.

XII SYSTEM REQUIREMENTS

Hardware Requirements

System - Pentium-IV
Speed - 2.4GHZ
Hard Disk - 40GB
Monitor - 15VGA color
RAM - 512MB

Software Requirements

Operating System - Windows XP
Coding Language - Python

XIII TECHNOLOGIES USED

Front End:- HTML, CSS, JavaScript

Back End:- Python

Tool:- Flask

Algorithm:- CNN

XIV RESULT

Recently, deep mastering has grow to be a extensively used approach in breast most cancers diagnosis. The ordinary type accuracy the usage of this approach is 98%, that's very good. This reduces the charge of fake-fine and false-poor outcomes, consequently permitting more accurate diagnosis of most cancers sufferers.

Advanced getting to know techniques locate breast cancer 18 months in advance than traditional diagnostic assessments. Also, breast cancer sufferers are easily recognized at low fee.

XV CONCLUSION

The motive of this tool is to hit upon cancer, diagnose its circumstance, prescribe medication to the affected man or woman and prescribe appropriate tablets. Detecting and treating most cancers in its early levels is always famous.

XVI REFERENCES

- [1] Geetha P, Sneha R, Sneka S, Subhiksha.R, "Breast Cancer Detection Using Deep Learning Algorithms",2022.
- [2] P. Liu, B. Fu, S. X. Yang, L. Deng, X. Zhong and H. Zheng, "Optimizing Survival Analysis of XGBoost for Ties to Predict Disease Progression of Breast Cancer,"2021.

- [3] D. A. Zebari, D. Q. Zeebaree, A. M. Abdulazeez, H. Haronand H. N. A. Hamed, "Improved Threshold Based and Trainable Fully Automated Segmentation for Breast Cancer Boundary and Pectoral Muscle in Mammogram Images,"2020
- [4] H. Lee, J. Park and J. Y. Hwang, "Channel Attention Module With Multiscale Pooling for Breast Cancer Ultrasound Image,"2020
- [5] H. M. Whitney, H. Li, Y. Ji, P. Liu and M. L. Giger, "Comparison of Breast MRI Tumor Classification Using Human-Engineered Radiomics, Transfer Learning From Deep Convolutional Neural Networks, and Fusion Methods," 2020.
- [6] D. Wei, S. Weinstein, M. -K. Hsieh, L. Pantalone and D. Kontos, "Three-Dimensional Whole Breast Segmentation in Sagittal and Axial Breast MRI With Dense Depth Field Modeling and Localized Self-Adaptation for Chest-Wall Line Detection,"2019.
- [7] Q. Wuniri, W. Huangfu, Y. Liu, X. Lin, L. Liu and Z. Yu, "A Generic-Driven Wrapper Embedded With Feature-TypeAware Hybrid Bayesian Classifier for Breast Cancer Classification,"2019.
- [8] B. Fu, P. Liu, J. Lin, L. Deng, K. Hu and H. Zheng, "Predicting Invasive Disease-Free Survival for Early Stage Breast Cancer Patients Using Follow-Up Clinical Data,"2019.
- [9] H. Song et al., "Detectability of Breast Tumors in Excised Breast Tissues of Total Mastectomy by IR-UWB-Radar-Based Breast Cancer Detector,"2019.
- [10] N. Aibe et al., "Results of a nationwide survey on Japanese clinical practice in breast-conserving radiotherapy for breast cancer,"2019.
- [11] G. G. N. Geweid and M. A. Abdallah, "A Novel Approach for Breast Cancer Investigation and Recognition Using MLevel Set-BasedOptimization Functions,"2019.
- [12] Mazin Abed Mohammed, Belal Al-Khateeb, Ahmed Rashid, "Neural Network And Multifra Ctal Dimension Features For Breast Cancer Classification From Ultrasound Images",2018.
- [13] Md Rezaul Karim, Sm Faysal Bellah, Md. Abdus Salam, Md. JahangirHossain, "Epidemiology Of Breast Cancer Among The Female Patients In Bangladesh",2016.
- [14] Nadiah Mohamad, Fatimah Zaini, Aiman Johari, Ihsan Yassin "Comparison Between Levenberg-Marquardt And Scaled Conjugate Gradient Training Algorithms For Breast Cancer Diagnosis", 2014.
- [15] Soumadip Ghosh, Sujoy Mondal, Bhaskar Ghosh, "A Comparative Study Of Breast Cancer Detection Based On Svm And Mlp Bpn Classifier",2014.