



CITYFIX - REVOLUTIONIZING WASTE MANAGEMENT USING JS

Thakur Shyamnarayan Degree College

Mr. Vikas Dubey, Jayesh Pitroda, Om Gawade

Assistant professor, Undergraduate Student, Undergraduate Student

Department of Information Technology

University of Mumbai, Mumbai, India

Abstract : Rapid urbanization and increasing population have intensified the challenges of waste management in modern cities, leading to delayed complaint handling, inefficient waste collection, and poor coordination between citizens and authorities. To address these issues, this paper presents **CityFix**, a smart waste management platform that integrates digital issue reporting, real-time status tracking, NGO coordination, reward-based user engagement, and IoT-enabled smart bins into a unified system. The platform allows users to upload images or videos of waste-affected areas, request waste pickup, and monitor resolution updates seamlessly. By combining modern web technologies with sensor-based waste detection and scalable backend architecture, CityFix improves response time, enhances transparency, and promotes responsible waste disposal through incentive mechanisms. The proposed system offers an efficient, sustainable, and technology-driven approach to urban cleanliness, supporting smart city initiatives and long-term environmental sustainability.

IndexTerms - Smart Waste Management, IoT, Real-Time Reporting, Environmental Sustainability, Web Application, NGO Coordination, Reward-Based System, React, Node.js, MongoDB, Smart City

I. INTRODUCTION

Effective waste management has become a critical concern in rapidly growing urban environments, where increasing population density and consumption patterns generate large volumes of solid waste. Traditional systems for reporting and handling waste-related issues often rely on manual complaints, delayed response mechanisms, and limited coordination between citizens and municipal authorities, resulting in inefficiencies and environmental degradation. To overcome these challenges, the CityFix platform is proposed as a smart, technology-driven solution that integrates digital issue reporting, real-time communication, NGO coordination, reward-based participation, and IoT-enabled smart bins into a unified system. By allowing users to upload images or videos of waste-affected areas, request pickups, and track resolution status in real time, the system enhances transparency and accountability. The integration of modern web technologies with scalable backend architecture ensures efficient data management and seamless user interaction, making CityFix a reliable and sustainable solution for supporting smart city initiatives and improving urban cleanliness.

II. PURPOSE

The primary purpose of the CityFix project is to develop an intelligent and efficient waste management platform that simplifies the process of reporting, monitoring, and resolving urban waste-related issues. The system aims to reduce response time, improve coordination between citizens and waste management authorities, and promote responsible environmental practices through a reward-based engagement model. By integrating digital reporting, real-time updates, and smart bin technology, CityFix seeks to enhance transparency, operational efficiency, and overall urban cleanliness while supporting sustainable development initiatives.

III. SCOPE

The scope of the CityFix system includes real-time waste issue reporting, image and video-based complaint submission, NGO coordination, smart bin integration using IoT sensors, and subscription-based user management. The platform is designed to operate as a scalable web and mobile application capable of expanding to multiple cities and municipalities. It focuses on improving waste segregation, monitoring collection processes, maintaining structured digital records, and encouraging citizen participation through incentives. The system can further be extended for large-scale smart city deployments and integration with government waste management infrastructures.

IV. EXISTING ALGORITHM

1. Waste Detection and Reporting Algorithm

Image-based waste identification is supported through user-uploaded photos and videos, which are processed and stored in the system database.

Location tagging and timestamp recording are automatically applied to each complaint to ensure accurate tracking and verification.

2. Smart Bin Processing Algorithm

Sensor-Based Waste Level Detection is implemented using ultrasonic and IR sensors to monitor bin capacity in real time.

Threshold-Based Alert Generation triggers automatic notifications to NGOs when bins reach predefined fill levels.

3. Algorithm for Complaint Management

State-Based Complaint Handling Logic ensures that each waste report follows a defined lifecycle such as Pending, In Progress, and Resolved.

Duplicate Complaint Prevention Algorithm avoids multiple entries for the same location within a short time interval.

4. Reward and Subscription Processing

Rule-Based Point Allocation assigns reward points based on valid complaint submissions and responsible waste disposal.

Subscription Validation Algorithm manages user access to Basic and Premium plans and controls feature limitations accordingly.

5. Security and Authentication

Password Encryption is implemented using secure hashing algorithms to protect user credentials.

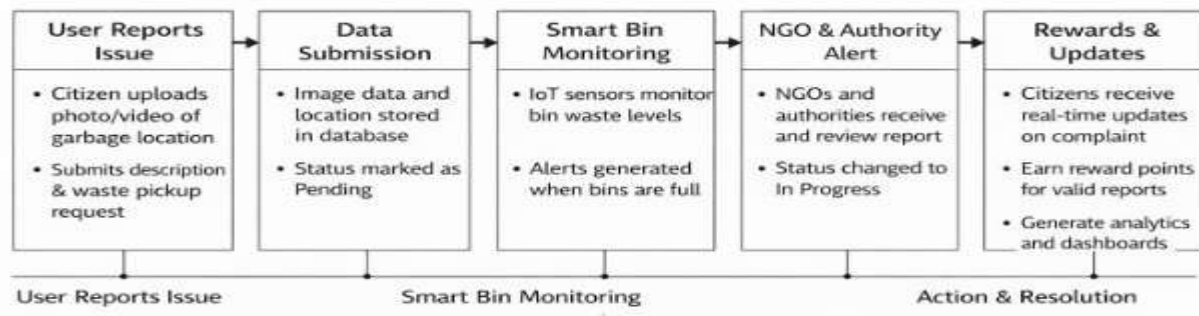
Role-Based Access Control (RBAC) restricts system features based on user roles such as Citizen, NGO, and Administrator.

6. Database Management

Data Storage and Retrieval are managed using structured database queries for efficient complaint tracking.

Aggregation and Reporting Algorithms generate dashboards, statistics, and performance summaries for monitoring system effectiveness.

IV. FLOW OF PROJECT



V. RESULTS AND DISCUSSION

The CityFix smart waste management system was tested under simulated real-time conditions to evaluate its functionality, responsiveness, and reliability. During testing, users were able to successfully submit waste complaints by uploading images and descriptions through the application interface. The system accurately stored complaint details, assigned appropriate status labels such as Pending and In Progress, and forwarded alerts to designated NGOs or authorities.



Figure 1.1

Smart bin monitoring was also evaluated, where sensor-based threshold detection successfully generated automatic notifications when bins reached predefined capacity levels. All complaint records and updates were stored securely in the database without duplication or data inconsistency.

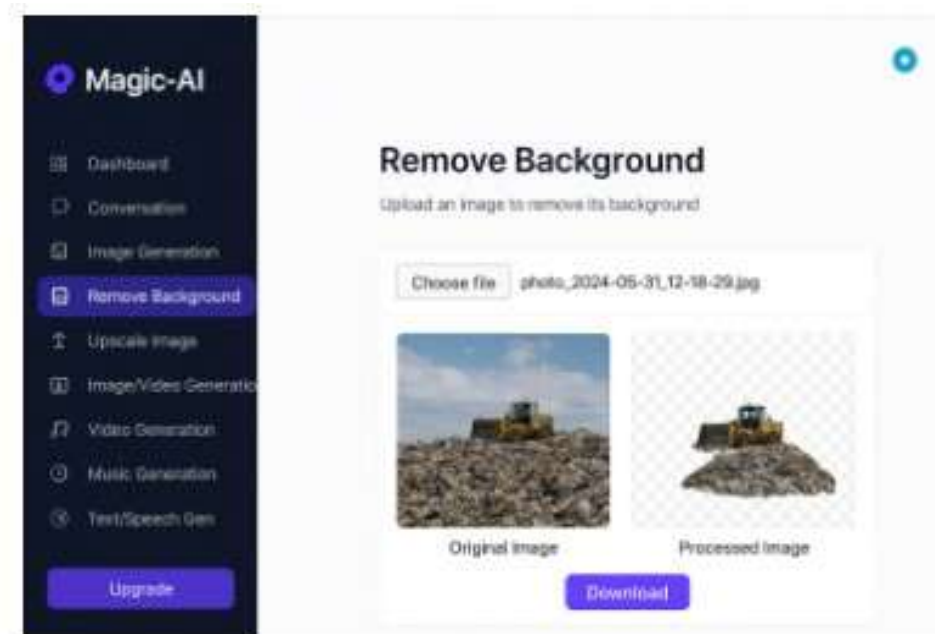


Figure 1.2

The results demonstrate that the integration of digital reporting, real-time status tracking, reward allocation, and NGO coordination significantly improves the efficiency of urban waste handling processes. The dashboard interface provided clear visibility of complaint history, resolution timelines, and user reward points, confirming proper data aggregation and visualization. Experimental evaluation showed improved response coordination and transparency compared to traditional complaint systems.

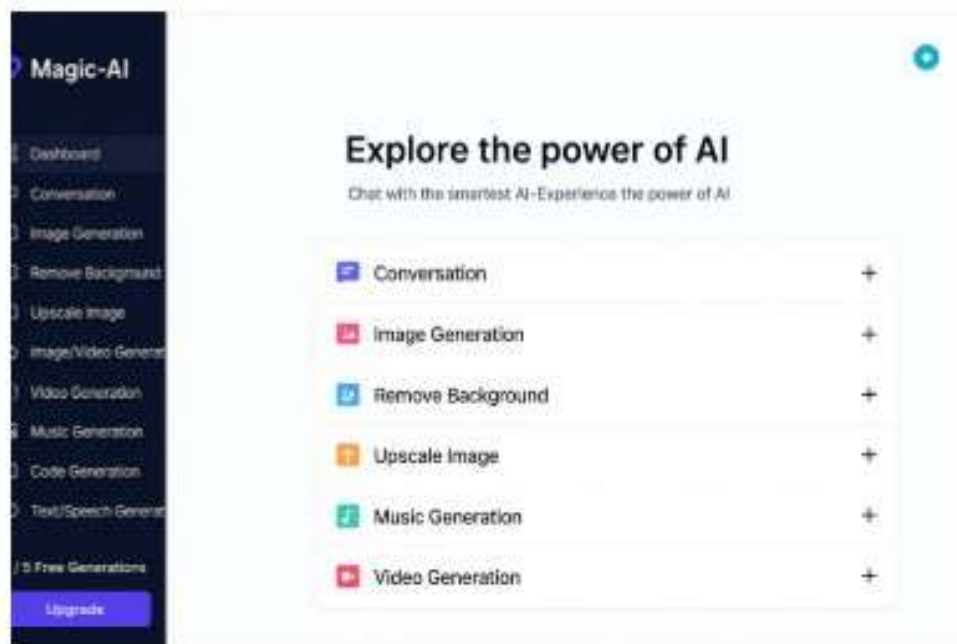


Figure 1.3

Overall, the system performed reliably under controlled testing conditions and proves to be a practical, scalable, and sustainable solution for enhancing waste management operations in smart city environments.

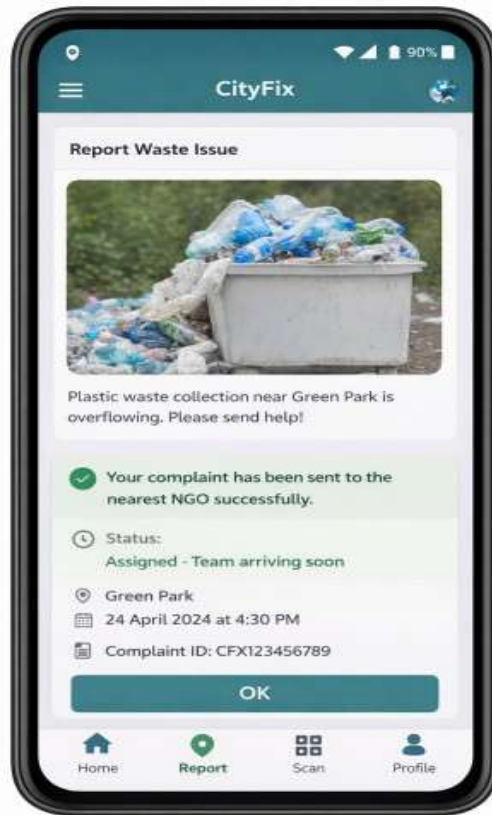
VI. FUTURE SCOPE

The CityFix platform has significant potential for expansion and enhancement in future developments. The system can be extended to support full-scale mobile application deployment, enabling citizens to report issues and receive updates seamlessly through Android and iOS devices. Cloud integration can further improve scalability, allowing the platform to operate across multiple cities with centralized monitoring and data management. Advanced analytics and machine learning techniques can be incorporated to predict waste generation patterns, optimize collection routes, and identify high-risk pollution zones, thereby

improving operational efficiency.

The CityFix platform has significant potential for expansion and enhancement in future developments. The system can be extended to support full-scale mobile application deployment, enabling citizens to report issues and receive updates seamlessly through Android and iOS devices. Cloud integration can further improve scalability, allowing the platform to operate across multiple cities with centralized monitoring and data management. Advanced analytics and machine learning techniques can be incorporated to predict waste generation patterns, optimize collection routes, and identify high-risk pollution zones, thereby improving operational efficiency.

VII. RESULT AND PERFORMANCE EVALUATION



VIII. CONCLUSION

The CityFix system successfully demonstrates how modern web technologies and smart monitoring mechanisms can be integrated to improve urban waste management processes. By enabling digital complaint submission, real-time tracking, NGO coordination, and reward-based citizen participation, the platform enhances transparency, efficiency, and accountability in waste handling operations. The integration of IoT-enabled smart bins and scalable architecture further strengthens its capability to operate in real-world smart city environments. Overall, the project provides a practical, sustainable, and technology-driven solution that contributes to cleaner cities and responsible environmental practices while offering strong potential for future expansion and large-scale implementation.

XI. ACKNOWLEDGMENT

The successful completion of this project would not have been possible without the guidance, support, and encouragement of several individuals.

First and foremost, we express our sincere gratitude to our project guide, **Mr Vikas Dubey**, for his invaluable insights, expert guidance, and continuous support. His feedback and technical expertise helped us overcome challenges and refine our ideas, leading to the successful implementation of this project.

We also extend our heartfelt appreciation to our professors and mentors for their knowledge and encouragement, which shaped our understanding and boosted our confidence in tackling complexities. Their guidance played a crucial role in enhancing the overall quality of our work.

X. REFERENCES

- React Documentation, "React – A JavaScript Library for Building User Interfaces," Available: <https://react.dev/>, Accessed February 2026.
- Next.js Documentation, "Next.js Framework Documentation," Available: <https://nextjs.org/docs>, Accessed February 2026.
- Node.js Documentation, "Node.js Official Documentation," Available: <https://nodejs.org/en/docs/>, Accessed February 2026.
- MongoDB Documentation, "MongoDB Manual and Developer Guide," Available: <https://www.mongodb.com/docs/>, Accessed February 2026.
- Google Generative AI Documentation, "Gemini API Documentation," Available: <https://ai.google.dev/>, Accessed February 2026.

2026.

Arduino Documentation, “Arduino Programming and Hardware Documentation,” Available: <https://www.arduino.cc/reference/en/>, Accessed February 2026.

ESP32 Documentation, “ESP32 Technical Reference and IoT Development Guide,” Available: <https://docs.espressif.com/>, Accessed February 2026.

Firebase Documentation, “Firebase Authentication and Real-Time Services,” Available: <https://firebase.google.com/docs>, Accessed February 2026.

Axios Documentation, “Axios HTTP Client Documentation,” Available: <https://axios-http.com/docs/intro>, Accessed February 2026.

