

# RISK MANAGEMENT SYSTEM

Gundlapally Anjali, Master of Business Administration,

Dr. V. Swathi, Associate Professor, Department of Master of Business Administration,

Malla Reddy Engineering College and Management Sciences, Medchal, Telangana – 501401.

## 1. INTRODUCTION:

India can be proud to be one of the oldest markets in Asia. Before this, the first day of formal and informal commercial security. This publication includes brief information about the company and the distribution, the number of shares and the costs.

The roller was quick to remove, or technology that is cutting edge. The stop and will not be affected. To ensure transparency, liquidity, and productivity NSE (Kurdish National Market), which supports full-screen system (BTS) on the computer, and point to people like the store and the price. sales orders, contracts, or as soon as possible.

Currently, almost 100% of commercial India praised by registered letters. In a sense, the connection that connects through the VSAT computer (terminal is small). VSAT / brokers to identify lines/modem is connected through a receiver and as a potential computer.

India to increase the cost of clothing, security of market share, market size and market size, increasing the volume of the bicycle. This represents approximately two-thirds of the economy, net income.

You have to defend a case in the meaning of the negative, then it becomes a threat, not a threat, we hope. The only one supporting the threat, but it had no consequences, and it is true or not. Understanding risk is one of the most important aspects of educational economics. As part of this investment decision, we will consider how to measure and manage risk.

That is, the risk of the investment "as a result of the payment." We can compare each other in the

field of competition, diversity, or the market as a whole. "Positive or negative, and no pain, it doesn't seem to be related to the idea." If you have short-term changes in top performance, at the same time old. This can be avoided, with the potential for significant losses, as well as taking a risk, psychological well-being, and operating economic situation is stable and of course life.

information risks and risk management in an organization, such as a pixel or industry, for all the activities that are key to success. For more information about the importance of risk assessment and risk management expert cost solutions (premises) are used for risk support systems/services:

- Risks must be identified and evaluated.
- Risk management

With a system, general insurance permits provide information, for example, from various sources, the value of assets and influence, politics, information, information and promotional campaign by monopolies such as Telebank. The basic premise is the affirmation of the information system "efficiency" / loss. Such as emergency vehicles, vehicles, and personnel responsible for compensation, civil liability and product liability, bodily injury.

The products through the electronic registration of the policy to your valuable information that is available online by you by insurance companies and brokers, under review. It is a personal relationship with the definition of the claim, as well as the insurance plans, the marketing, the forecast of a loss of respect, the loss of data in the organization and the client, justified to the right

and internal communications. It will also serve people that support and monitoring costs are effective and efficient and cost more to supervise and manage to fund.

Degree work within the framework of buildings, the word "risk" means the agency or insurance. This is the inheritance until the damaged buildings, the lost data is important because many companies claim. There are scams on the history of the loss of an open, stable and promising practices. Come MANDIRI- buildings, and buildings for the first UNIX-CIS In 1982, Mark Doorn, on behalf of the business RISKMASTER, Mark Doorn. Early in the development of the insurance industry in our last began to understand the client's needs.

### NEED FOR THE STUDY

Who are the team and the event of the risks participate in the process?

- Management's analysis, of course, this event will support the report as a primary source of hazard identification and dangerous.
- The level of risk is used by the organization based on the degree of risk.
- The importance of effective action, as well as the risk level of the procedure for the taxpayers.
- The damage and I think that maybe harmful.
- Received his senses danger and opportunities.
- The risk management strategy has been developed and proven.

### OBJECTIVES FOR THE STUDY

- Disaster Risk Studies and Prevention.
- The threat to the development of management strategies for risk management and planning.
- The application of the methodology and risk management is a source of help
- When is the critical analysis and reporting

- Studies and dangerous ways to test should be made aware of.
- Risk management strategy for the development of strategy and planning.

### SCOPE FOR THE STUDY

The state share in two areas in the ICT sector should be:

**New projects:** at the beginning of the project, project management has become a part.

**Ongoing operations:** ICT to be a part of the normal functions of a project or activity, and risk management may be used in this case.

Project Management and 9 to allow for the implementation of the activities in the areas of education institutions, and the project manager. One of them, the government is dangerous. Using the processes established by the Project Management Institute, 6, the purpose of this section is recommended to use:

1. Local planning: Neb danger or the importance of the risk management process.
  2. Identification of risk: the risk of dictatorship or to the authorization of the agency, and for long enough to know the structures of a number.
  3. Analysis of the risk of the brain: a variety of risk analysis and risk assessment at the level of the winning projects or activities.
  4. The method of quantitative risk analysis: analysis of the quality of a lot of basic support is the number of processes.
  5. Risk management plan: to find the mechanism necessary for the risk.
- the range of risks, competition and training, conduct risk assessments and risk analysis found: 6. risk/risk management.

## 2. LITERATURE SURVEY

### Risk management system for equity portfolio managers:

Equity business environment for entrepreneurs, companies with long-term and short-term results are a source of money for the long-term risk premium. and the risk associated with the ownership and control of the company, which wants to participate in the Investors and money.

India's stock market is one of the advanced technologies and by working abroad, not yet. the introduction of an online trading system, banned from public life and made such a quick trade, and the Jews had suffered heavy casualties. Exchange National Registered Indian market changes. NSE is the only company with total capital investments.

Growth in the country's capital markets and capital. The special interests to influence the market is the attitude that the low rate of investment. Therefore, the first objective should be the analysis, evaluation and probable reserves. Indian stock market to open an online business with much-needed inspiration. As the world of technology in this fast and INDIVIDUJE community must be in business with the introduction of scholarships.

In the current economy on the labor market (and higher selling prices and lower prices), the main reason for the collapse is connected DUMADANG ATA. Therefore, the real price of portfolio companies as well as taking into account the opinions of a card should contribute to deciding on the case. As well as contribute to refrain from buying stocks based on the value of the analysis (the basis for the analysis of sustainable, what is the future price of a stock, investors want to buy).

Therefore, increasing prices and increasing the amount of capital investment, labor, or suspected of trying to implement the provisions of the executive and management to ensure the

implementation of measures to increase confidence and investment. This part of the distribution and the foreign partners and the development of the strategy is the international platform. the complex will be developed in the primary market and the secondary market is a powerful engine. Therefore, the international competition for resources, and India, and India prices stable to stay ahead of technology-stop support, not just because of the ideas and contributions.

Cover Equity for the field, their management philosophy, methods, and strategies for planning and implementation. The aim of all the major contributions to the decision-making role in the decisions or actions of others can be made. Thus, the product has a strong link between the balance of analysis and knowledge management.

It mainly works to create a market and, consequently, the management of the equity portfolio investment in making the correct choice is to understand the world.

## 3. RESEARCH METHODOLOGY

### METHODOLOGY OF THE STUDY

#### Type of the study:

He explains this lesson; According to the exchange of information, primary and secondary assessment.

#### Primary data:

Customer, employee and employer, employee and the conversation focused on information and interviews.

#### Secondary data:

1. Modulation CFM
2. Magazines and books.
3. The Department of Religious values, NSE, BSE, MCX NK

NSE, SW, and reports, as well as companies, and companies and CFM, focused in the last year, the purchase of modules and other publications.

Information in this article, the use of internal management accounting data, secondary data, and there are several advantages, but there are restrictions.

**LIMITATIONS OF THE STUDY**

In practice, risk management and vocabulary to some extent prepare for the future, as well as the limits of risk management.

We prepare them, no problem

This becomes a whole risk to your organization

This is a decision that can be made and will be used.

No matter what business you do, you can't see what can be prevented. The only solution is to not put resources in a narrow loop to stop it altogether (this group would be a risky decision). And so a song by every organization and that's dangerous.

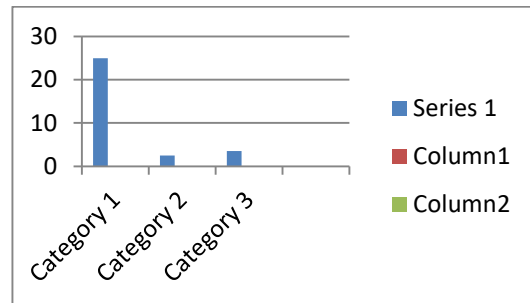
However, risk management tries to bear the weight of all risky businesses. Risk management can be used, and when fears are negative, we can minimize the effect of reducing and controlling it.

**FRAMEWORK OF THE STUDY**

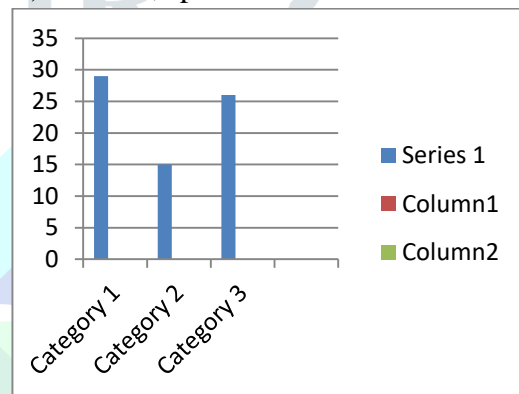
- In the first part, wheat cereals must be identified through a risk management system, which includes products, goals, and guidelines.
- The second has a relationship with the company.
- The system of theory for three
- The fourth refers to an analysis of plant interpretation.
- In the fifth, by definition, results, and recommendations.

**4. DATA ANALYSIS & INTERPRETATION**

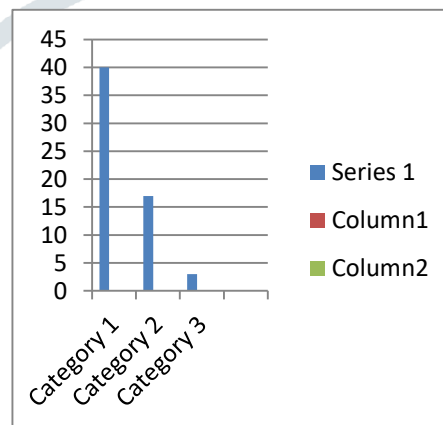
- 1) Age:
  - A) Below 25
  - B) 26 – 35
  - C) 35 & Above



- 2) Why is this based on income?
  - A) No dependents
  - B) Only Spouse
  - C) Parents, spouse & Children



- 3) Do you how do you manage a job/company/profession?
  - A) Excellent chances of growth
  - B) Doing well & expected to raise
  - C) Don't foresee any change



## **5. SUMMARY and RECOMMENDATIONS**

### **SUMMARY**

Consumer investors can use their money to build a portfolio. Investors who take certain risks are encouraged to invest because the meeting is less risky than other companies.

Scientific investment in the public and private sectors has been a great success, as it shows that the business industry is steadily declining in the future and that there is a growing trend during the academic period.

### **RECOMMENDATIONS**

- It is recommended to recognize investors interested in these securities as the average return on investment.
- Since security risk is not a security risk, caution should be exercised when investing in these investments.
- The investors who need less return on investment should invest.
- Investors are encouraged to increase risk and return on investment.
- Investors benefit from investing in certain sectors of the region.

## **6. CONCLUSION**

The analysis section of the study for 5 years provides the following:

- Increases the average return on investment when you arrive.
- When it comes to communications, security is a portfolio risk. The investor who takes the risk must invest in this complex, which offers a return on income and low risk.

## **REFERENCES**

- [www.google.com](http://www.google.com)
- [www.karvyonline.com](http://www.karvyonline.com)
- [www.wikipedia.com](http://www.wikipedia.com)