

ANALYSIS OF FEM SIMULATION FOR MACHINING OF Ti6Al4V

Rahul Sharma^{1*}, Swastik Pradhan²

Assistant Professor, School of Mechanical Engineering, Lovely Professional University
Phagwara, Punjab-144411, India

*Corresponding author Email: rahul.16932@lpu.co.in

Abstract

Simulation using Deform 3D tool is very popular and effective to study the various parametric effect in manufacturing of variety of objects. It provides an easy and effective way of analyses and then declaring the results. It is observed from this study that appropriate size of magnetic abrasive particle contributes to optimize the surface finish. The abrasive particle used is alumina powder and the magnetic particle is iron powder. Experiments were performed on Stainless Steel 202 to inspect the sound effects of several process parameters such as rotational speed, electromagnet voltage, machining gap

Keywords: DEFORM 3D; Meshing; FEA analysis.

Introduction

In modern manufacturing area, a number of new tools and manufacturing techniques have been developed. The new expected results cannot be possible to be achieved with traditional methods of manufacturing. So new methods have to be analyzed before actual manufacturing. It has been observed that it requires a large amount to be invested in set up and testing. So better way is that all of these should be analyzed in DEFORM 3D to save expenditures. Though, for the pre-selection of tool geometries and machining factors, model wear test by utilizing finite element methods [1] would be significantly useful. This research aims to examine the outcome of cutting insert geometries [2,3] such as relief angle, nose radius, and cutting insert shape [4,5] on output response specifications. The machining specifications like feed rate, depth of cut and cutting speed may be taken as constant.

Literature

For any manufacturing industry, the standard of the component produced determine its competitiveness and effectiveness. They studied the effect of different tool geometries on surface roughness, cutting forces and wear. DEFORM-3D, analysis software and a machining simulation are used in simulation analysis depending on the designed experiment. Mesh generated in cutting insert and workpiece are shown in figure 1[6].

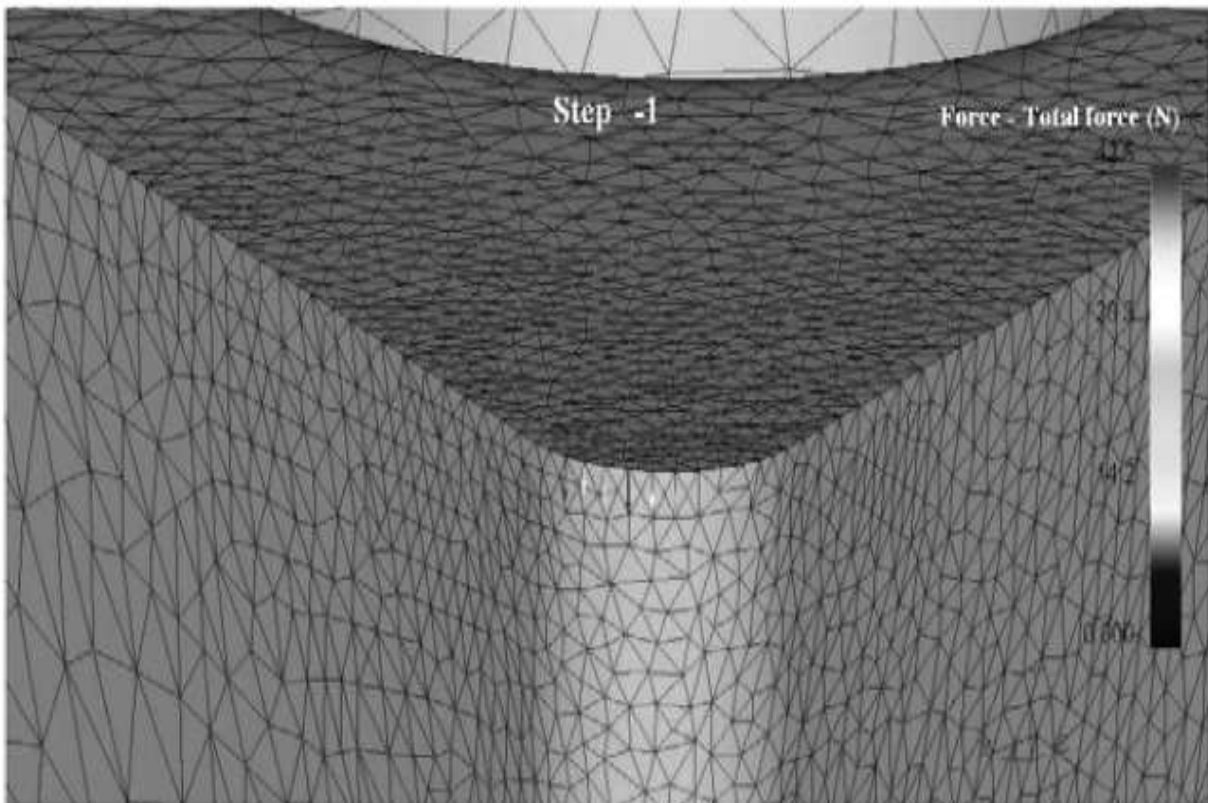


Fig. 1: Mesh generation in cutting tool [6].

Using DEFORM 3D software, Finite Element Analysis is carried out. Milling operation has been selected and three times the speed of mill cutter was changed. John-cook's equation is used to define the material in the software. The results got from the simulation and experimental work were proved as valid after comparison [7]. Z. Wanga et al. (2014) have done the thermal-Mechanical finite element method (FEM) model is used in the machining of metals. DEFORM 3D is used for simulation of milling of steel material. To predict the milling force DEFORM-3D software could be used. In this, the model's prediction was confirmed experimentally and the experimental results obtained were found to match one another. Figure 2 indicates the temperature variability inside the workpiece [8]. C. Zhuo et al used Titanium material that are accurately simulated using DFORM 3D tool. Research had acquired the effect of cutting depth on cutting power and accuracy [9]. When the part of machining is completed then the stress area with variation in values is shown in figure 3. As a part of result analysis, the primary, feeding and thrust cutting force graphs have been plotted concerning different load values and shown in figure 4.

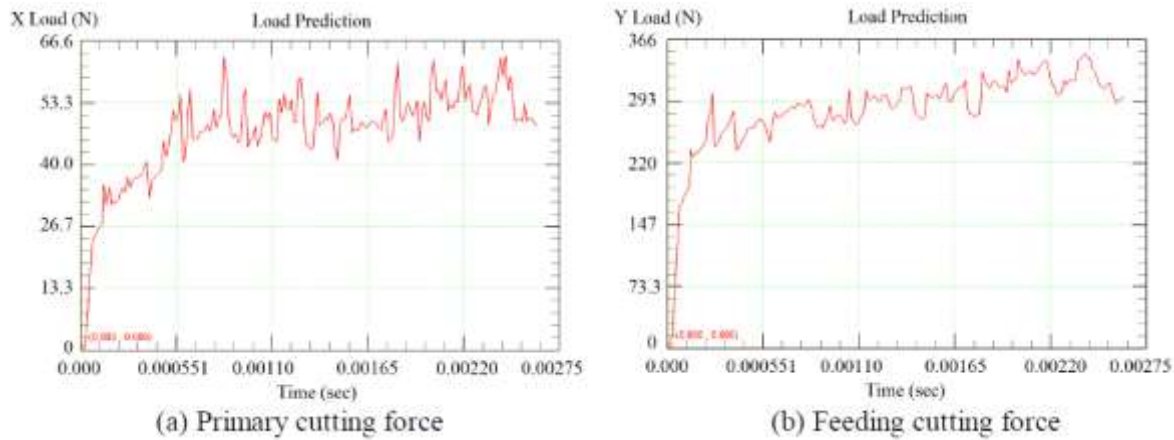


Fig. 4: Graph of cutting force with parameter [9].

Attanasioa et al. aimed to simulate the wear of the device by drilling nickel based alloys, precisely Inconel 718. The main concern is to research the effect of mechanical and thermal behavior when machining these kinds of alloys, due to this reason the impact of tool wear on the life of the tool on the quality of the end part and power consumption and cutting force is important to examine. The commercial FEM software usually allows certain device wear models to be implemented except for upgrading the design of device. In the drilling of Inconel 718, DEFORM 3D FEA software was used to build and implement a feasible subroutine taking tool geometry update to simulate tool wear. The agreement between the wear value of the measured and predicted tool was strong. A method has been developed for this simulation according to the necessary dimensions as shown in figure 5. A mesh generation of tool is shown in figure 6 [10].



Fig. 5: 3D Modeling of drill tool [10].

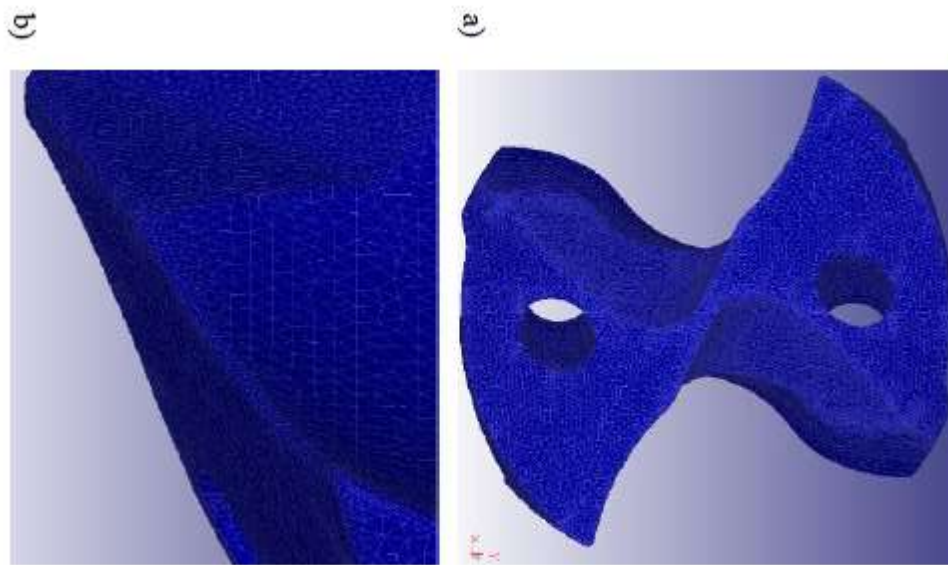


Fig. 6: Mesh generation for FEM Model [10].

R. Rajesh et al. have used cutting insert of tungsten carbide having a coating of Titanium, Aluminium oxide, and Titanium Carbo-Nitride (TiCN). Selected four parameters that are- cut depth, speed, federate and material. They have taken these factors at three different levels and get a total of 9 experiments. Taguchi's method was used to enhance all these experiments. After that best acceptable condition and factors were examined for the minimal quantity of tool wear in the turning process. After the simulation, the analysis of wear rate has been performed and shown in figure 7. Similar to this an important part of the analysis has shown in figure 8. Then a comparison has been made in between the simulation and experimental results in terms of wear rate shown in figure 9.

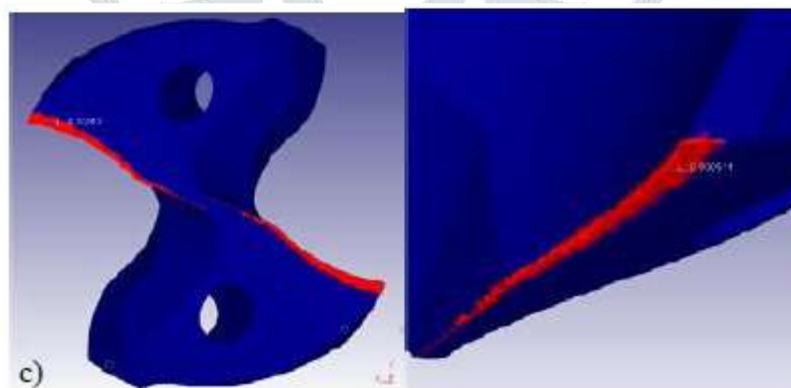


Fig. 7: Result in terms of wear rate [11].

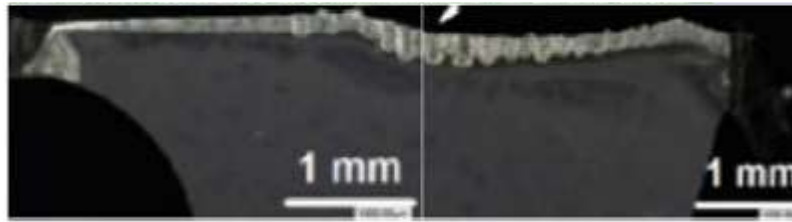


Fig. 8: Cutting tool showing wear rate [11].

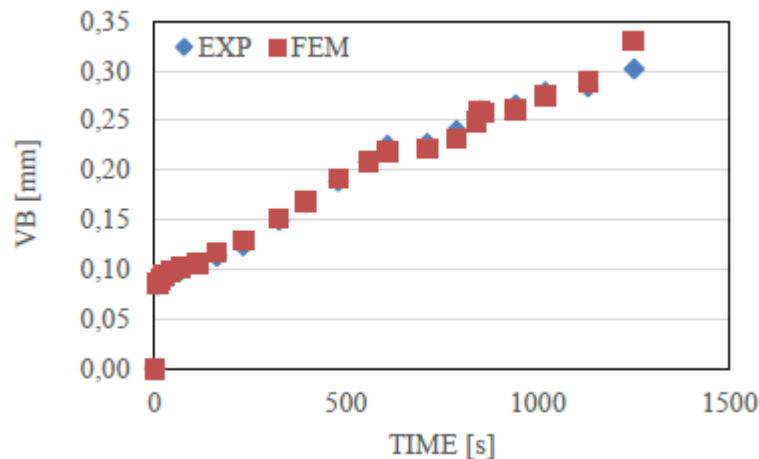


Fig. 9: Comparison of experimental and simulation wear rate [11].

A. S. Mohrni et al. used DEFORM for FEM simulation to avoid the error in the thin-walled machining to obtain the characteristics across the thin-wall. In this investigation, like validation, the study was carried out with a helical end-mill of 42° . The outcome proves that FEM simulation using DEFORM 3D has failed in approaching the experimental results. It might be due to the occurrence of vibration and the depth of cut was very small [12]. R. S. Parihara et al. (2017) tried to examine the impact on performance characteristics of significant machining variables, using ceramic tools in the turning of ASI H13, precise and accurate attempts were taken. To predict the temperature, cutting forces, etc by Lagrangian model, DEFORM 3D which is a FEM based software was used as a 3D machining model. [13].

Conclusion

Various factors can be studied very easily using DEFORM 3D an advance tool for optimization. The results from such analysis can be compared with experimental results for declaring the final effectiveness of that particular techniques and its variables. It also makes a clear 3D representation, graphical representation of results.

References

- [1] Arrazola, P. J.; Ugarte, D.; Dominguez, X. (2008). A new approach for the friction identification during machining through the use of finite element modeling, *International Journal of Machine Tools & Manufacture*, Vol. 48, No. 2, 173-183, doi:10.1016/j.ijmachtools.2007.08.022.
- [2] Yen, Y.-C.; Jain, A.; Altan, T. (2004). A finite element analysis of orthogonal machining using different tool edge geometries, *International Journal of Materials Processing Technology*, Vol. 146, No. 1, 72-81, doi:10.1016/S0924-0136(03)00846-X.
- [3] Zouhar, J.; Piska, M. (2008). Modeling the orthogonal machining process using cutting tools with different geometry, *MM Science Journal*, October, 48-51.
- [4] Ee, K. C.; Dillon Jr., O. W.; Jawahir, I. S. (2005). Finite element modeling of residual stresses in machining induced by cutting using a tool with finite edge radius, *International Journal of Mechanical Sciences*, Vol. 47, No. 10, 1611-1628, doi:10.1016/j.ijmecsci.2005.06.001.
- [5] Gurbuz, H.; Kurt, A.; Ciftci, I.; Seker, U. (2011). The Influence of Chip Breaker Geometry on Tool Stresses in Turning, *Strojniški vestnik – Journal of Mechanical Engineering*, Vol. 57, No. 2, 91-99, DOI:10.5545/sv-jme.2009.191.
- [6] Tamizharasan, T.* & Senthil K., Optimization of cutting insert geometry using DEFORM-3D: Numerical simulation and Experimental validation, *International Journal of Simulation Modelling (IJSIMM)*, 11 (2012) 2, 65-76
- [7] G.G. Reddy, E.D. Reddy, C.H.P. Kumar, S.Ashwin, D.C. Prasad, 3D Finite element analysis of milling operation on AISI 420 SS using DEFORM 3D, *International Journal of Mechanical and Production Engineering*, Volume- 2, Issue- 1, Jan.-2014, 10-12.
- [8] Z. Wanga, Y. Hu, D. Zhu, DEFORM-3D Based on Machining Simulation during Metal Milling, *Key Engineering Materials Vols. 579-580 (2014) pp 197-201*
- [9] C. Zhuo, Q. Lu-fang and Y. Li, Cutting Force Simulation of Titanium-based on DEFORM-3D, *International Conference on Material, Mechanical and Manufacturing Engineering, IC3ME 2015, 1846-1849*
- [10] A. Attanasio, F. Fainia, J.C. Outeiro, FEM simulation of tool wear in drilling, *Procedia CIRP 58 (2017) 440 – 444*
- [11] R. Rajesh, J. L. Mercy, S. R. Kumar, and A. Singh, Design and analysis of tool wear characteristics during turning using DEFORM 3D *ARPN Journal of Engineering and Applied Sciences*, VOL. 12, NO. 17, 4940-4952
- [12] A S Mohruni, M Zahir, M Yanis, S Sharif, I Yani, Investigation of Finite Element Modelling on Thin-Walled Machining of Ti6Al4V using DEFORM-3D, *Journal of Physics: Conference Series, Conf. Ser. 1167 012002, 1-9*
- [13] R. Singh, Parihara, R. K. Saha, G. Srinivasua, Finite Element Analysis of Cutting Forces Generated in Turning, Process using Deform 3D Software, *Materials Today: Proceedings 4 (2017) 8432–8438*